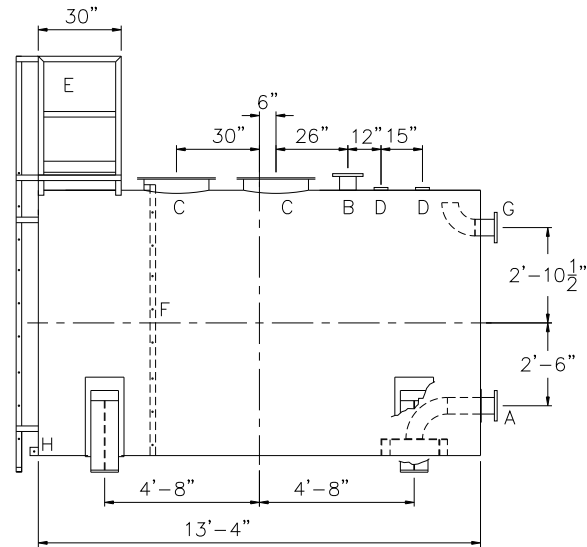
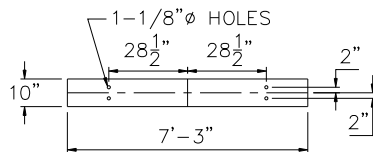
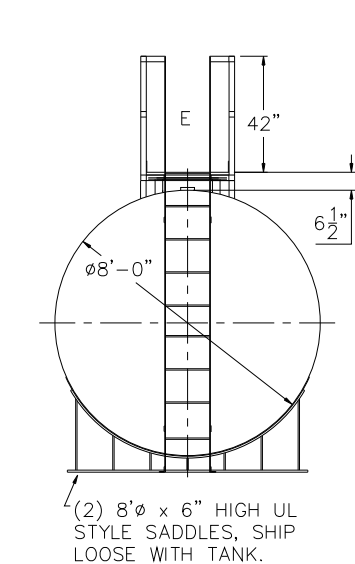


NOTE: ALL RIGHTS RESERVED. THIS DRAWING MUST NOT BE REPRODUCED IN ANY FORM WITHOUT THE WRITTEN PERMISSION OF HIGHLAND TANK®. HIGHLAND TANK® SHALL BE RESPONSIBLE ONLY FOR ITEMS INDICATED ON THIS FABRICATION DRAWING UNLESS OTHERWISE NOTED. CUSTOMER IS RESPONSIBLE FOR VERIFYING CORRECTNESS OF SIZE AND LOCATION OF FITTINGS, ACCESSORIES, AND COATINGS SHOWN ON THIS DRAWING.

TOUCH UP OF FINISHED PAINT IS REQUIRED BY INSTALLATION CONTRACTOR. TOUCH UP PAINT SHIPPED WITH TANK.

SHIPPING LUGS AS NEEDED



| DESIGN DATA |
|---|
| CAPACITY -5,000 GALLONS |
| TYPE - FIRE PROTECTION TANK (FPT) |
| NO. REQ. - - |
| OPERATING PRESSURE -ATMOSPHERIC |
| TANK MATERIAL - MILD CARBON STEEL |
| THICKNESS - HEADS: 5/16" |
| THICKNESS - SHELL: 1/4" |
| CONSTRUCTION -LAP WELD INSIDE AND OUTSIDE |
| TANK TEST -5 PSIG |
| INT. FINISH - SSPC SP10 BLAST, HighDRO®-LINER PLUS FOR NFPA 22 APPLICATIONS |
| EXT. FINISH -SSPC SP6 BLAST, WHITE URETHANE PAINT |
| LABEL - NONE |

| <u>LEGEND</u> | |
|---------------|--|
| A | FLANGE WITH INTERNAL VORTEX BREAKER PER NFPA 22 |
| B | FLANGE – VENT |
| C | 24" x 1/4" PLATE TIGHT BOLT MANWAY WITH 1/8" THICK NEO–CORK GASKET |
| D | 4" FNPT CONNECTION |
| E | STD HTM EXTERNAL LADDER & PLATFORM ASSEMBLY – PAINTED SAFETY YELLOW AND SHIPPED LOOSE FOR INSTALLATION ON SITE BY OTHERS |
| F | HTM STD INTERNAL LADDER |
| G | FLANGE WITH INTERNAL 90° ELBOW SHOWN – OVERFLOW |
| H | FB–3"x 1/4"x3" WITH 5/8"Ø HOLE ON CL (GROUNDING LUG) |

| | | | |
|---|----------------|----------------------------------|---------------------------|
|  | | Highland Tank[®] | |
| HighDRO [®] WATER STORAGE TANK | | | |
| 5,000 GAL 96"Ø AH FIRE PROTECTION TANK | | | |
| CUSTOMER: | | | |
| PROJECT: | | | |
| QUOTE NO: | | CHK'D BY: | |
| SCALE: 1/4"=1'-0" | DATE: XX/XX/XX | DWG. BY: XXX | DWG. NO: 05000AHSWHDFPT96 |