

TOUCH UP OF FINISHED PAINT IS
REQUIRED BY INSTALLATION
CONTRACTOR. TOUCH UP PAINT SHIPPED
WITH TANK.

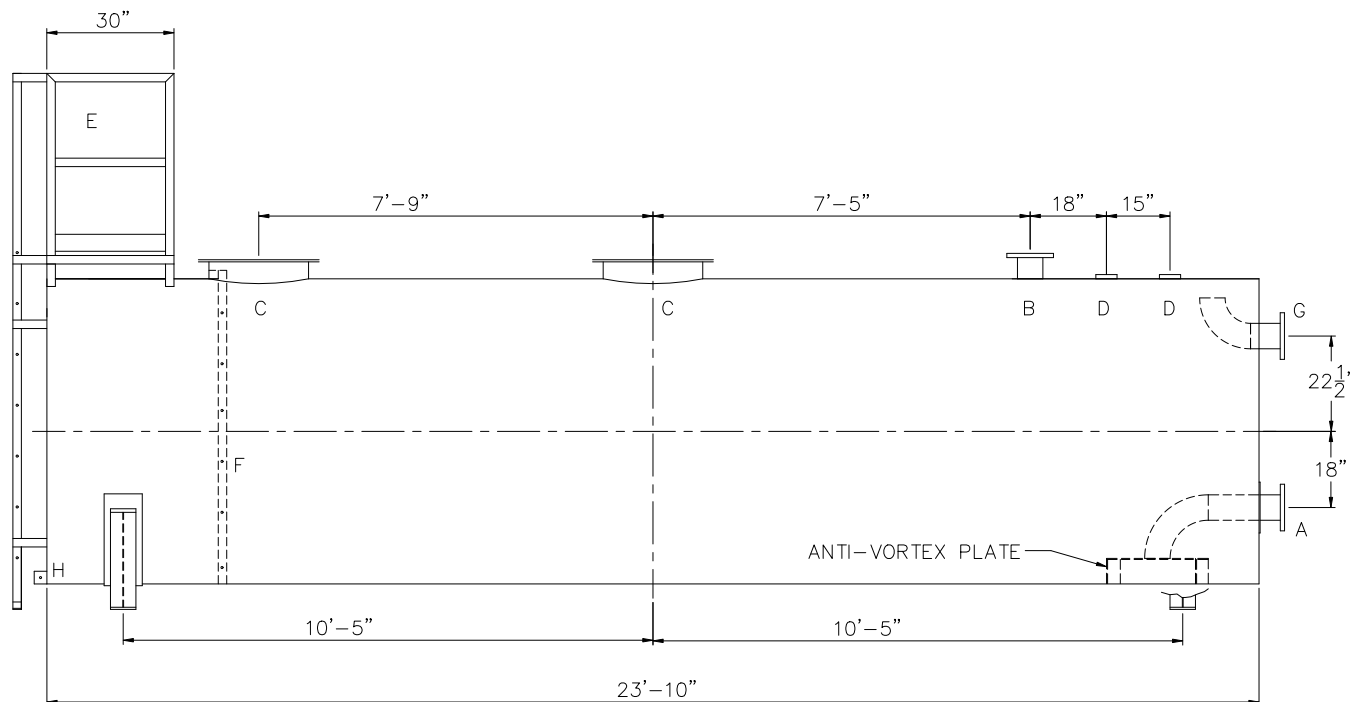
E

42"

6 1/2"

Ø6'-0"

(2) 6' x 6" HIGH UL STYLE SADDLES, SHIP LOOSE WITH TANK.



DESIGN DATA	LEGEND	
CAPACITY – 5,000 GALLONS	A	FLANGE WITH INTERNAL ANTI-VORTEX PLATE PER NFPA 22
TYPE – FIRE PROTECTION TANK (FPT)	B	FLANGE – VENT
NO. REQ. – –	C	24" X 1/2" PLATE TIGHT BOLT MANWAY WITH 1/8" THICK NEO-CORK GASKET
OPERATING PRESSURE – ATMOSPHERIC	D	4" FNPT CONNECTION
SPECIFIC GRAVITY = 1.0	E	STD HTM EXTERNAL LADDER & PLATFORM ASSEMBLY – PAINTED SAFETY YELLOW AND SHIPPED LOOSE FOR INSTALLATION ON SITE BY OTHERS
TANK MATERIAL – MILD CARBON STEEL	F	HTM STD INTERNAL LADDER
THICKNESS – HEADS: 5/16"	G	FLANGE WITH INTERNAL 90° ELBOW SHOWN – OVERFLOW
THICKNESS – SHELL: 1/4"	H	FB-3"x 1/4"x3" WITH 5/8"Ø HOLE ON CL (GROUNDING LUG)
CONSTRUCTION – LAP WELD INSIDE AND OUTSIDE		
TANK TEST – 5 PSIG		
INT. FINISH – SSPC SP10 BLAST, HighDRO®-LINER PLUS FOR NFPA 22 APPLICATIONS		
EXT. FINISH – SSPC SP6 BLAST, WHITE URETHANE PAINT		
LABEL – NONE		

 <h1>Highland Tank</h1>	
UNLESS NOTED, TOLERANCES ARE +/- .1"	
<h2>HighDRO® WATER STORAGE TANK</h2> <p>5,000 GAL 72"Ø SINGLE-WALL ABOVEGROUND HORIZONTAL FOR FIRE PROTECTION WITH BOTTOM DRAIN</p>	
CUSTOMER:	
PROJECT:	
QUOTE NO:	
SCALE: 3/8"=1'-0"	DATE: XX/XX/XX
DWG. BY: XXX	DWG. NO. 05000AHSWHDFTBD72
CHK'D BY:	