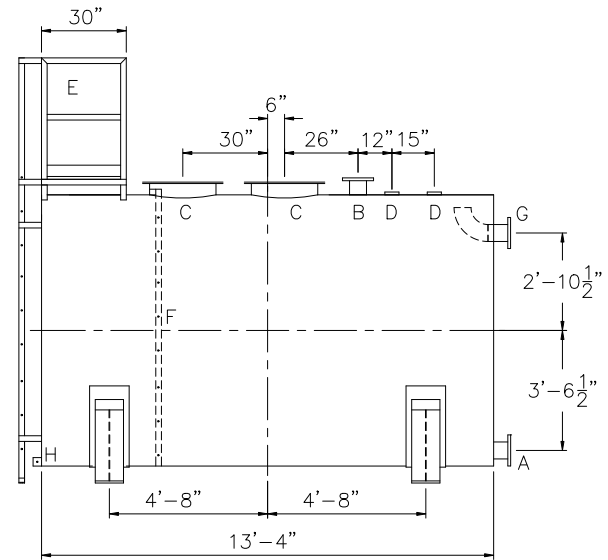



SHIPPING LUGS AS NEEDED

(2) 8' ϕ x 6" HIGH UL STYLE SADDLES, SHIP LOOSE WITH TANK.

1-1/8" ϕ HOLES
 28 1/2" 28 1/2"
 7'-3"
 2"
 2"



DESIGN DATA	LEGEND	
CAPACITY –5,000 GALLONS	A	FLANGE – SUPPLY
TYPE – POTABLE WATER TANK (PWT)	B	FLANGE – VENT
NO. REQ. – –	C	24" X 1/4" PLATE TIGHT BOLT MANWAY WITH 1/8" THICK NEO-CORK GASKET
OPERATING PRESSURE –ATMOSPHERIC	D	4" FNPT CONNECTION
TANK MATERIAL – MILD CARBON STEEL	E	STD HTM EXTERNAL LADDER & PLATFORM ASSEMBLY – PAINTED SAFETY YELLOW AND SHIPPED LOOSE FOR INSTALLATION ON SITE BY OTHERS
THICKNESS – HEADS: 5/16"	F	HTM STD INTERNAL LADDER
THICKNESS – SHELL: 1/4"	G	FLANGE WITH INTERNAL 90° ELBOW SHOWN – OVERFLOW
CONSTRUCTION –LAP WELD INSIDE AND OUTSIDE	H	FB-3"x 1/4"x3" WITH 5/8"Ø HOLE ON CL (GROUNDING LUG)
TANK TEST –5 PSIG		
INT. FINISH – SP10 BLAST HighDRO®-LINER PLUS FOR NSF 61 APPLICATIONS		
EXT. FINISH –SSPC SP6 BLAST, WHITE URETHANE PAINT		
LABEL – NONE		

 <h1>Highland Tank</h1>	
UNLESS NOTED, TOLERANCES ARE +/- .1"	
<h2>HighDRO® WATER STORAGE TANK</h2> <p>5,000 GAL 96"Ø SINGLE-WALL ABOVEGROUND HORIZONTAL FOR POTABLE WATER WITH BOTTOM DRAIN</p>	
CUSTOMER:	
PROJECT:	
QUOTE NO:	
SCALE: 1/4"=1'-0"	DATE: XX/XX/XX
DWG. BY: XXXX	DWG. NO: 05000AHSWHPWTBD96
CHK'D BY:	