

GROUNDING LUG w/
 $5/8''$ ϕ HOLE
 (LUG LOCATION
 PER SHOP)

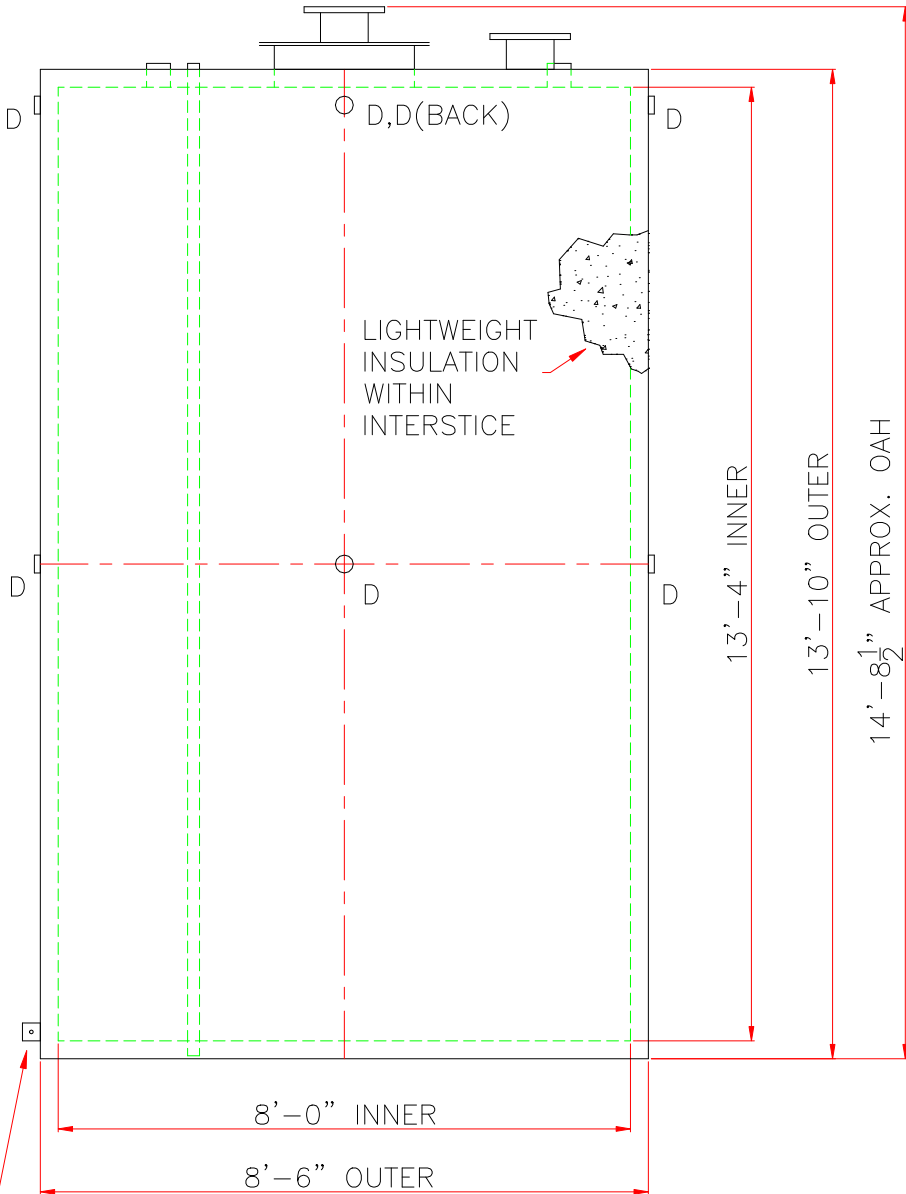
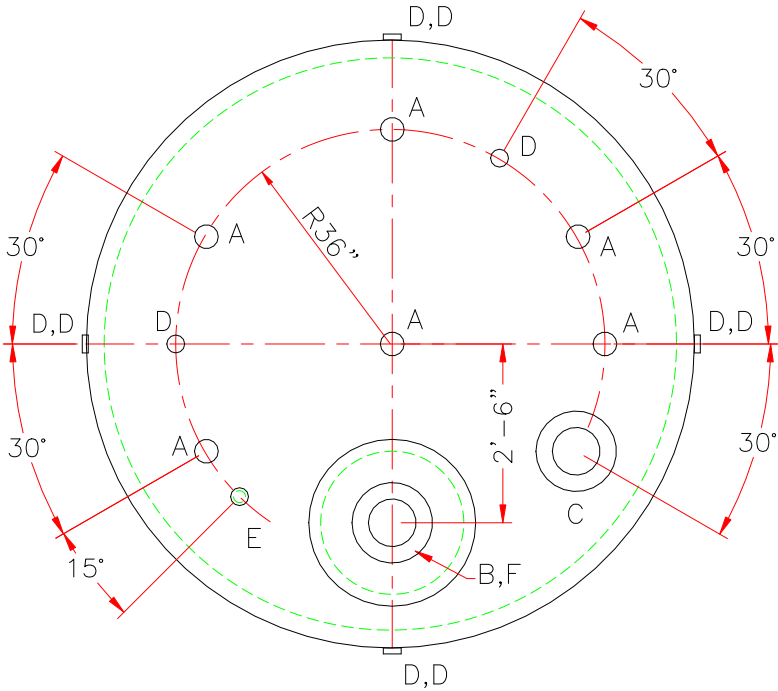
NOTE: ALL RIGHTS RESERVED. THIS DRAWING MUST NOT BE REPRODUCED IN ANY FORM WITHOUT THE WRITTEN PERMISSION OF HIGHLAND TANK®. HIGHLAND TANK® SHALL BE RESPONSIBLE ONLY FOR ITEMS INDICATED ON THIS FABRICATION DRAWING UNLESS OTHERWISE NOTED. CUSTOMER IS RESPONSIBLE FOR VERIFYING CORRECTNESS OF SIZE AND LOCATION OF FITTINGS, ACCESSORIES, AND COATINGS SHOWN ON THIS DRAWING.

TOUCH UP OF FINISHED PAINT IS REQUIRED BY INSTALLATION CONTRACTOR. TOUCH UP PAINT SHIPPED WITH TANK.

NOTES

1. SEE PLAN VIEW FOR TRUE ORIENTATION AND LOCATION OF FITTING
2. LIFTING LUGS FOR UNLOADING UNIT & STANDING UNIT UPRIGHT TO BE PLACED AS NEEDED BY FABRICATION SHOP
3. A 3x3x¼” STEEL GROUNDING LUG WITH A 5⁄8”Ø HOLE IN CENTER TO BE PLACED ON SHELL AT BOTTOM OF TANK IN LINE WITH LIFTING LUGS

SHIP LOOSE: (INSTALLATION ON SITE BY OTHERS)
(2) 8” FLANGED EMERGENCY VENTS



GROUNDING LUG w/
5⁄8”Ø HOLE
(LUG LOCATION
PER SHOP)

SPECIFICATIONS

CAPACITY – 5,000 GALLONS

TANK MATERIAL – MILD CARBON STEEL

THICKNESS – INNER – HEADS– /UL2085; SHELL – /UL2085

THICKNESS – OUTER – HEADS – /UL2085; SHELL – /UL2085

CONSTRUCTION – INNER – LAP WELD OUTSIDE ONLY

CONSTRUCTION – OUTER – LAP WELD OUTSIDE ONLY

TANK TEST – PER UL 2085

INT. FINISH – NONE

EXT. FINISH – SSPC SP6 BLAST, WHITE PAINT SYSTEM

LABEL – UL 2085 AND FIREGUARD PER sti

SPECIFIC GRAVITY = 1.0

FITTING LEGEND

A	4” FEMALE FG COUPLING
B	8” FFSO 150# FLANGE – PRIMARY EMERGENCY VENT USE ONLY
C	8” FFSO 150# FLANGE THROUGH OUTER SHELL ONLY, MARK WITH SPECIAL WARNING LABEL INTERSTITIAL EMERGENCY VENT USE ONLY
D	2” FITTING THROUGH OUTER SHELL ONLY WITH CAST IRON PLUG – MFG USE ONLY
E	2” MONITOR PIPE WITH MALE NPT END
F	24” X 1⁄4” PLATE TIGHT BOLT MANWAY WITH 1⁄8” THICK FIBREFLEX GASKET AND ”B” IN COVER ON CL

LOCATE GROUNDING LUG IN LINE WITH LIFT LUG

△					
		Highland Tank			
UNLESS NOTED, TOLERANCES ARE +/- 1"					
5,000 GAL 96”Ø VERTICAL FIREGUARD®					
CUSTOMER:					
PROJECT:					
QUOTE NO:				CHK'D BY:	
SCALE: 3⁄8"=1'-0"		DATE:		DWG. BY:	
				DWG. NO: 05000FG96VERT	