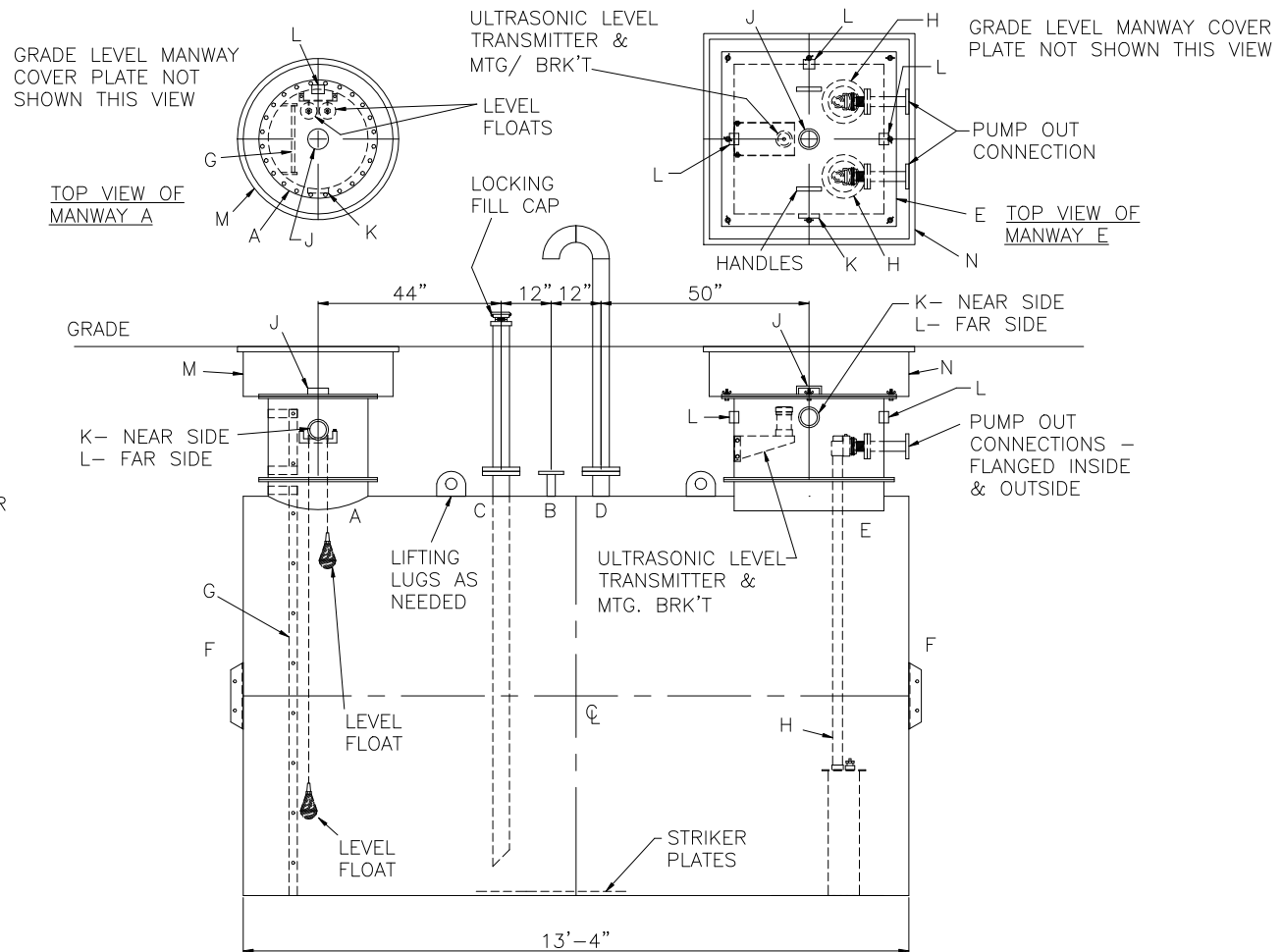
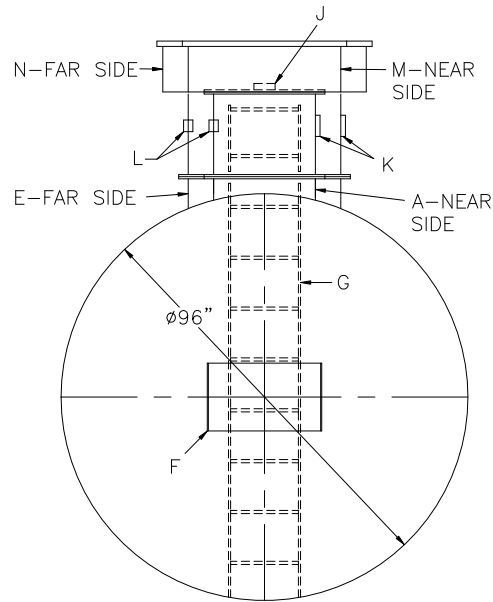


NOTES:

- 1) THE HIGHGUARD TANK IS NOT APPROVED FOR THE STORAGE OF HEATED PRODUCTS.
- 2) 15,000 VOLT SPARK TEST PROVIDED AT FACTORY.
- 3) SHOP TO INSTALL 1/4"x12"x12" STRIKER PLATES, ROLLED AND SEAL WELD TO THE TANK.



LEGEND

A	24"Ø TIGHT BOLT MANWAY w/ 1/8" THK. EPDM GASKET & MANWAY EXTENSION	G	16" WIDE INTERNAL LADDER W/ 3/4" RUNGS ON 12" SPACING.
B	150# RF50 FLANGE WITH SCH 40 DROP TO WITHIN 6" OF TANK BOTTOM (FILL CONNECTION)	H	PUMPS
C	2" 150# RF50 FLANGE	J	4" FNPT FITTING (GAUGE)
D	150# RF50 FLANGE w/ GOOSENECK VENT (VENT CONNECTION)	K	4" FNPT FITTING (VENT)
E	36" x 36" SQ. MANWAY w/ 1/8" THK. EPDM GASKET & MANWAY EXTENSION W/ ALUMINUM COVER PLATE AND HANDLES	L	2" FULL COUPLING (ELECTRICAL CONNECTION)
		M	GRADE LEVEL MANWAY - 36"Ø H-20 W/ LOCKABLE COVER PLATE
F	HTM SPIN BRK'T - MFG USE ONLY - NOT TO BE USED FOR FIELD INSTALLATION	N	GRADE LEVEL MANWAY - 48" x 48" H-20 W/ LOCKABLE COVER PLATE

		<h1>Highland Tank</h1>	
UNLESS NOTED, TOLERANCES ARE $\pm 1"$			
<h2>HighDRO WATER STORAGE TANK</h2>			
5,000 GAL 96"Ø SINGLE-WALL UNDERGROUND HORIZONTAL FOR POTABLE WATER WITH PUMP OUT			
CUSTOMER:			
PROJECT:			
QUOTE NO:		CHK'D BY:	
SCALE: $3/8"=1'-0"$	DATE:	DWG. BY:	DWG. NO: 05000HGSHDPTWP096