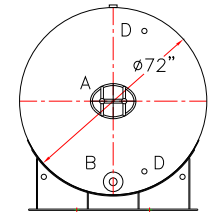
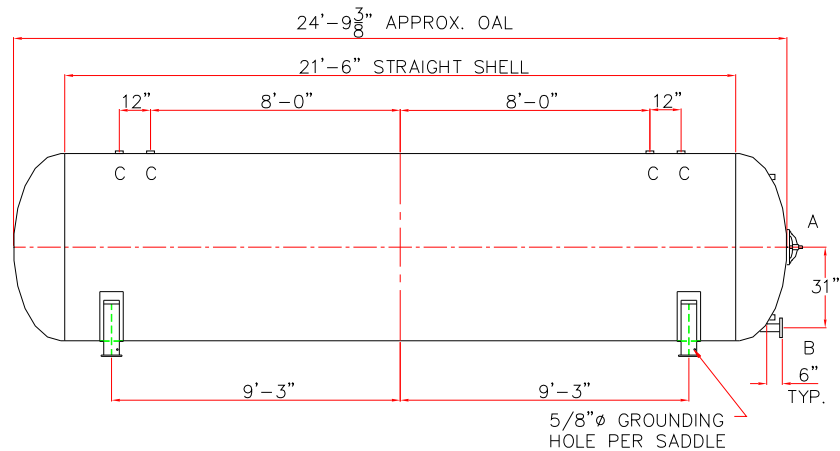
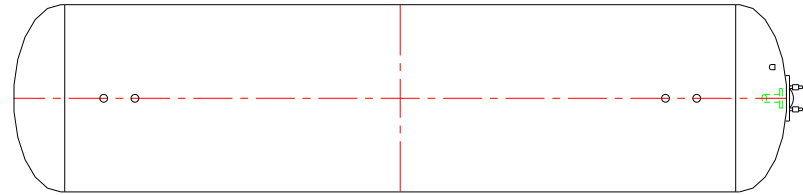


NOTE: ALL RIGHTS RESERVED. THIS
DRAWING MUST NOT BE REPRODUCED IN
ANY FORM WITHOUT THE WRITTEN
PERMISSION OF HIGHLAND TANK®.
HIGHLAND TANK® SHALL BE RESPONSIBLE
ONLY FOR ITEMS INDICATED ON THIS
FABRICATION DRAWING UNLESS OTHERWISE
NOTED. CUSTOMER IS RESPONSIBLE FOR
VERIFYING CORRECTNESS OF SIZE AND
LOCATION OF FITTINGS, ACCESSORIES, AND
COATINGS SHOWN ON THIS DRAWING.

TOUCH UP OF FINISHED PAINT IS
REQUIRED BY INSTALLATION
CONTRACTOR. TOUCH UP PAINT SHIPPED
WITH TANK.



DESIGN DATA

CAPACITY - 5,000 GALLONS
TYPE - ABOVEGROUND HYDROPNEUMATIC VESSEL
NO. REQ. - ---
MAX. ALLOW. WORKING PRES. - --- PSIG @ 140 °F
MAX ALLOW. EXTERNAL W.P. - --- PSIG @ 140 °F
MIN. DESIGN METAL TEMP - -20°F @ --- PSIG
HYDROSTATIC TEST PRESSURE - --- PSIG
CORROSION ALLOWANCE - ---
POSTWELD HEAT TREATED - ---
RADIOGRAPHY - ---
HEADS - --- SA516 GR 70 ASME 2:1 ELLIPTICAL
SHELL - --- SA516 GR 70
INT. FINISH - SSPC, SP10 BLAST HIGH DRO™ LINER PLUS FOR NSF/ANSI 61 POTABLE WATER OR NSF LISTED EPOXY FOR HOT WATER APPLICATIONS
EXT. FINISH - GRAY SHOP PRIMER OR OTHER TO BE SPECIFIED
CONSTRUCTION - BUTT WELD INSIDE AND OUTSIDE
ALL TANK FABRICATIONS TO BE IN ACCORDANCE WITH ASME SECTION VIII, DIVISION 1, LATEST EDITION, LATEST ADDENDA ALL SHELL, HEAD, FITTINGS, AND MANWAYS TO BE WELDED TO BIGBEE STEEL WELD PROCEDURE PER DRAWING F11151
HIGHLAND TANK SERIAL # - -

LEGEND

MARK	SIZE	TYPE	RATING	NOZZLE	FLANGE	COMMENTS
A	12" X 16"	ELLIPT.	300#	SA106 GR C	---	w/ NEOPRENE RUBBER GASKET
B	---	RFSO	150#	SA106 GR B	SA105	---
C	---	HALF CPLG	3000#	SA105	---	---
D	---	HALF CPLG	3000#	SA105	---	---

△					
		Highland Tank®			
5000 GALLON 72" Ø ABOVEGROUND HORIZONTAL HYDROPNEUMATIC VESSEL					
CUSTOMER:					
PROJECT:					
QUOTE NO:				CHK'D BY:	
SCALE: 1/4" = 12"	DATE:	DWG. BY:	DWG. NO: 05000HYPV72		