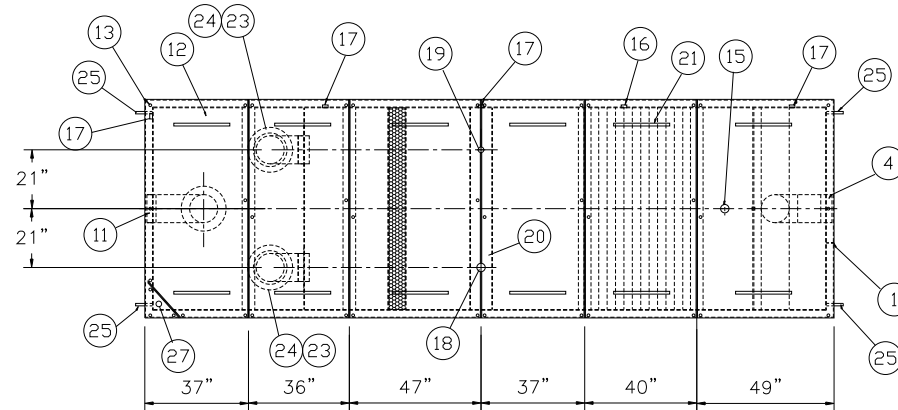


## GENERAL SPECIFICATIONS

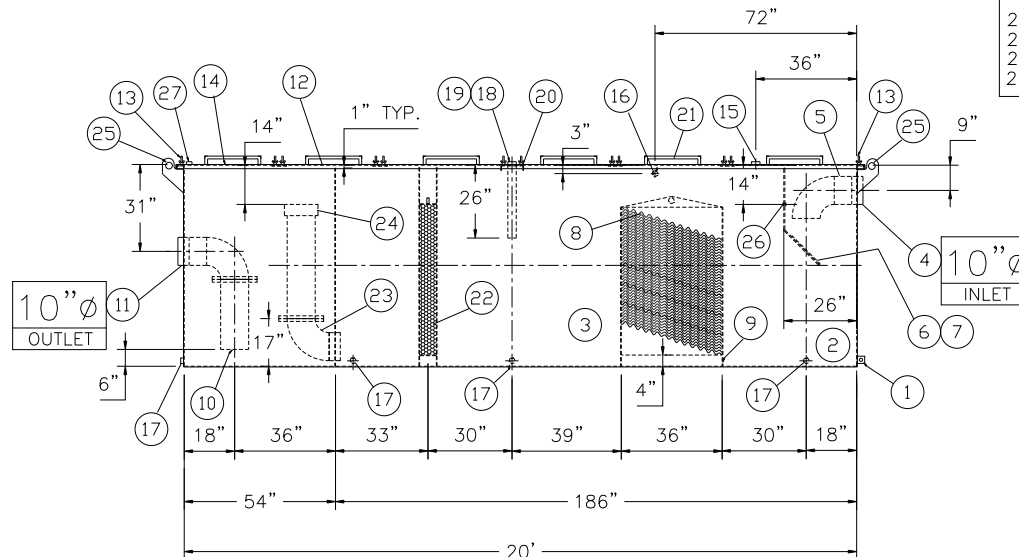
NO. REQ'D: (1)  
 CAPACITY: 5000 GALLONS  
 TYPE: RECTANGULAR, HTC, ABOVEGROUND, SINGLEWALL  
 MATERIAL: MILD CARBON STEEL  
 FLOW RATE: 500 GPM  
 GAUGE:  
 SHELL- 7 GA  
 HEADS- 7 GA  
 SURFACE PREP:  
 SSPC NO.10 BLAST ALL INTERIOR SURFACES  
 SSPC NO.6 BLAST ALL EXTERIOR SURFACES  
 COATING: MATERIAL THICKNESS  
 EXTERIOR- FINISH PAINT WHITE (3 MILS)  
 INTERIOR- POLYURETHANE (15 MILS)  
 CONSTRUCTION:  
 BUTT FIT & WELD ALL CORNERS IN & OUT

## NOTES

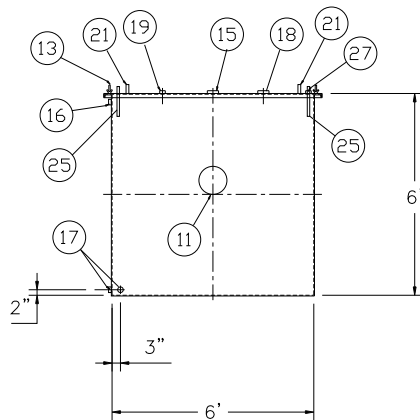
1. ALL INTERNAL MATERIAL IS 10 GA
2. ALL DRAINS MUST SHIP W/ STEEL PLUGS INSTALLED
3. LIFTING LUGS HAVE REINFORCING PLATES



PLAN VIEW



ELEVATION



END VIEW

## PROVIDED EQUIPMENT

1. 3"x3"x1/4" FLAT W/ 9/16"Ø HOLE DRILLED IN CENTER (GROUNDING LUG)
2. SEDIMENT CHAMBER
3. OIL WATER SEPARATOR CHAMBER
4. FNPT THREADED INLET
5. STEEL INLET ELBOW PIPING
6. VELOCITY HEAD DIFFUSION BAFFLE - 10GA
7. WEAR PLATE - 1/4"
8. REMOVABLE PARALLEL CORRUGATED PLATE COALESCER (CORELLA PVC PLATES) 1" PLATE SPACING
9. SLUDGE BAFFLE - 10GA
10. FLANGED PVC OUTLET DOWNCOMER PIPE
11. FNPT THREADED OUTLET W/ INTERNAL STEEL ELBOW AND FLANGE
12. (6) PIECE COVER - 7 GA
13. NUTS & BOLTS W/ LARGE WING NUTS-TYP. (CORROSION RESISTANT)
14. GASKET MATERIAL (FOR EACH REMOVABLE COVER)
15. 3"Ø FNPT (CLEAN-OUT)
16. 2"Ø FNPT (VENT)
17. 2"Ø FNPT HALF COUPLING (DRAIN) W/ STEEL PLUG
18. 3"Ø FNPT FULL COUPLING W/ 3" Ø INTERNAL PVC PIPE (OIL PUMPOUT)
19. 2"Ø FNPT HALF COUPLING (INTERFACE LEVEL SENSOR)
20. 7GA. CROSSMEMBER 9" WIDE FOR OIL PUMP-OUT AND LEVEL SENSOR FTG.
21. HANDLES PER H.T. STANDARD
22. 6" THICK PETROSCREEN COALESCER MATERIAL
23. 10"Ø STEEL ELBOW W/ FLANGE WELDED TO TOP FOR PVC RISER PIPES
24. 10"Ø ADJUSTABLE FERNCO COUPLING
25. LIFTING LUGS
26. 1"Ø FNPT COUPLING W/ PLUG
27. 2"Ø FNPT HALF COUPLING (HIGH WATER LEVEL SENSOR)

## REVISIONS



**Highland Tank**

U.S. Patent #4,722,800 Canadian Patent # 1,296,263  
 #6,606,224 # 2,389,065

5000 GALLON OIL WATER SEPARATOR  
 RECTANGULAR, HTC, SINGLE WALL

CUSTOMER:

PROJECT:

QUOTE NO:

CHK'D BY:

SCALE:  
 1/4"=1'-0"

DATE:  
 5-20-05

DWG. BY:

DWG. NO.:

05000RECSWHTC

UNLESS OTHERWISE SPECIFIED DIMENSIONS ARE IN INCHES  
 TOLERANCES ARE + OR - 1"

NOTE:  
 ALL RIGHTS RESERVED. THIS DRAWING OR ANY PART THEREOF MUST NOT BE REPRODUCED IN ANY FORM WITHOUT THE WRITTEN PERMISSION OF HIGHLAND TANK.  
 HIGHLAND TANK SHALL BE RESPONSIBLE ONLY FOR ITEMS INDICATED ON THIS FABRICATION DRAWING UNLESS OTHERWISE NOTED. CUSTOMER IS RESPONSIBLE FOR VERIFYING CORRECTNESS OF SIZE / LOCATION OF FITTINGS, ACCESSORIES & COATINGS SHOWN ON THIS DRAWING