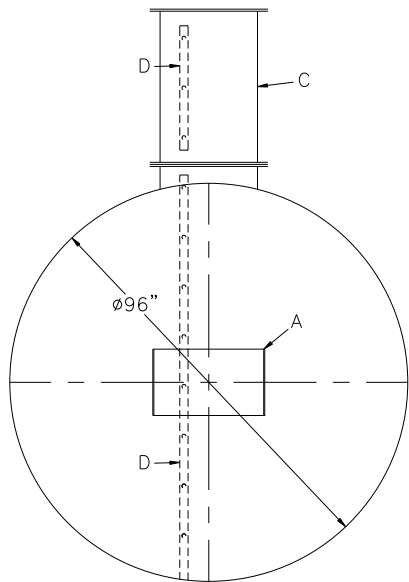


NOTE: ALL RIGHTS RESERVED. THIS DRAWING MUST NOT BE REPRODUCED IN ANY FORM WITHOUT THE WRITTEN PERMISSION OF HIGHLAND TANK. HIGHLAND TANK SHALL BE RESPONSIBLE ONLY FOR ITEMS INDICATED ON THIS FABRICATION DRAWING UNLESS OTHERWISE NOTED. CUSTOMER IS RESPONSIBLE FOR VERIFYING CORRECTNESS OF SIZE AND LOCATION OF FITTINGS, ACCESSORIES, AND COATINGS SHOWN ON THIS DRAWING.



DESIGN DATA

CAPACITY – 5,000 GALLONS

TYPE - SINGLE WALL, HIGHGUARD UNDERGROUND

NO.	REQ.	-	-
-----	------	---	---

OPERATING PRESSURE – ATMOSPHERIC

TANK MATERIAL – MILD CARBON STEEL

THICKNESS - HEADS- 1/4"
THICKNESS - SHELL- .225'

*GA THK. BASED ON 60" MAX. BURIAL DEPTH

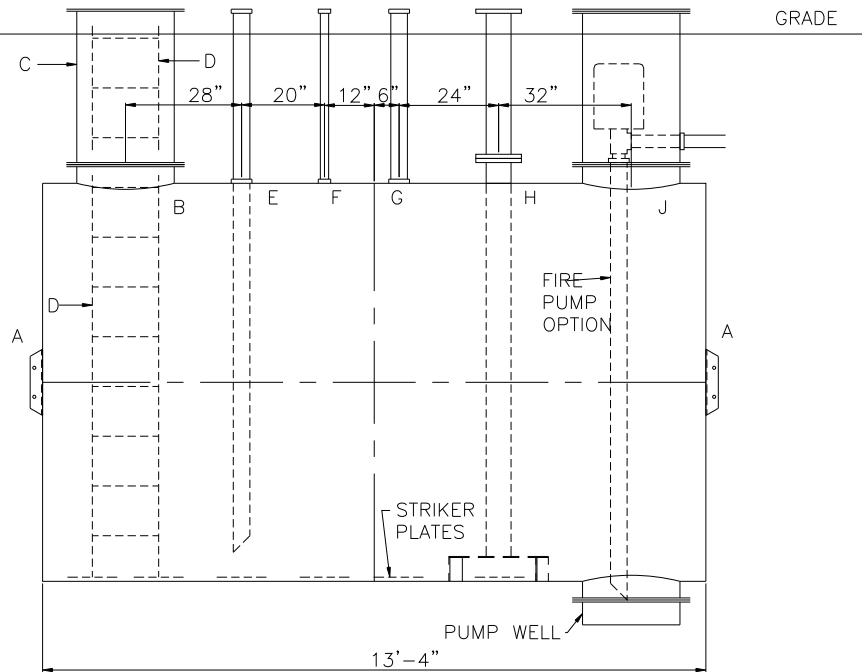
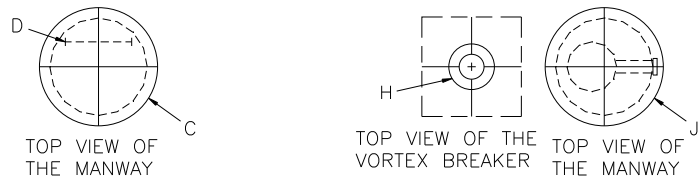
CONSTRUCTION - FLAT FLANGED HEADS, LAP WELD
INSIDE & OUTSIDE

TANK TEST - 5 PSIG

INT. FINISH - SSPC SP10 BLAST, HighDRO®-LINER
PLUS FOR NFPA 22 APPLICATIONS

EXT. FINISH - SP6 BLAST, 75 MILS POLYURETHANE

LABEL - UL-1746 PART IV, HIGHGUARD



LEGEND

A	HTM SPIN BRK'T – MFG USE ONLY – NOT TO BE USED FOR FIELD INSTALLATION	G	FNPT FITTING (VENT CONNECTION)
B	24"Ø TIGHT BOLT MANWAY w/ 1/8" NEO–CORK GASKET MATERIAL.	H	FLANGED SUCTION CONNECTION WITH NFPA 22 VORTEX BREAKER (OUTLET CONNECTION)
C	24"Ø MANWAY EXTENSION & COVER PLATE	J	<u>FIRE PUMP OPTION</u>
D	16" WIDE INTERNAL LADDER W/ 3/4" RUNGS ON 12" SPACING.		24"Ø TIGHT BOLT MANWAY & MANWAY EXTENSION w/ 1/8" NEO–CORK GASKET MATERIAL AND FIRE PUMP W/ DISCHARGE CONNECTION, BOTTOM SUMP PUMP WELL
E	FNPT FITTING WITH SCH 40 DROP TO WITHIN 6" OF TANK BOTTOM (FILL CONNECTION)		
F	2" FNPT FITTING (SENSOR CONNECTION)		

NOTES:

- 1) THE HIGHGUARD TANK IS NOT APPROVED FOR THE STORAGE OF HEATED PRODUCTS.
- 2) 15,000 VOLT SPARK TEST PROVIDED AT FACTORY.
- 3) SHOP TO INSTALL 1/4"x12"x12" STRIKER PLATES, ROLLED AND SEAL WELD TO THE TANK.

