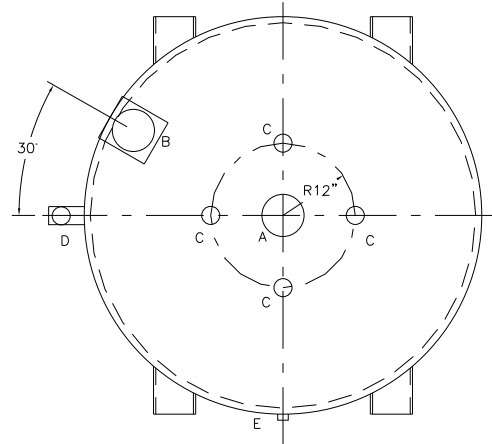


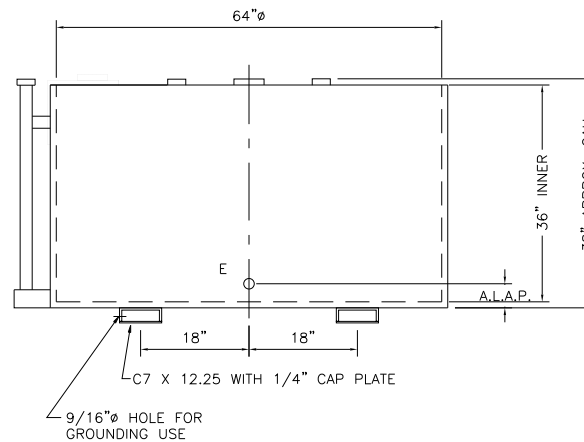
NOTE: ALL RIGHTS RESERVED. THIS DRAWING MUST NOT BE REPRODUCED IN ANY FORM WITHOUT THE WRITTEN PERMISSION OF HIGHLAND TANK®. HIGHLAND TANK® SHALL BE RESPONSIBLE ONLY FOR ITEMS INDICATED ON THIS FABRICATION DRAWING UNLESS OTHERWISE NOTED. CUSTOMER IS RESPONSIBLE FOR VERIFYING CORRECTNESS OF SIZE AND LOCATION OF FITTINGS, ACCESSORIES, AND COATINGS SHOWN ON THIS DRAWING.

TOUCH UP OF FINISHED PAINT IS REQUIRED BY INSTALLATION CONTRACTOR. TOUCH UP PAINT SHIPPED WITH TANK.



DESIGN DATA	
CAPACITY	— 500 GALLONS
TYPE	— BDV2 DOUBLE WALL
NO. REQ.	— —
OPERATING PRESSURE	— ATMOSPHERIC
SPECIFIC GRAVITY	— 1.0
TANK MATERIAL	— MILD CARBON STEEL
THICKNESS — TOP—	SINGLE WALL 7 GA FLAT FLANGED
THICKNESS — INNER— SHELL:	7 GA BOTTOM: 7 GA
THICKNESS — OUTER— SHELL:	10 GA BOTTOM: 10 GA
CONSTRUCTION	— LAP WELD INNER & OUTER
TOP & BOTTOM HEADS ARE	FLAT FLANGED
TANK TEST — INNER:	2 PSIG, OUTER:— 2 PSIG & FULL VACUUM
INT. FINISH	— NONE
EXT. FINISH	— SHOP PRIMER
LABEL	— UL 142

LEGEND	
A	6" HALF COUPLING (PRIMARY EMERGENCY VENT USE)
B	6"ø HALF COUPLING IN INTERSTICE EXTENSION BOX . MARK WITH WARNING LABEL — SECONDARY EMERGENCY VENT USE ONLY
C	2" FNPT FITTING
D	2" INTERSTITIAL MONITOR PIPE
E	3/4" FNPT FITTING
F	—



NOTES	
1.	SEE PLAN VIEW FOR TRUE ORIENTATION AND LOCATION OF FITTING
2.	LIFTING LUGS FOR UNLOADING UNIT & STANDING UNIT UPRIGHT TO BE PLACED AS NEEDED BY FABRICATION SHOP

 Highland Tank®	
500 GAL 64"ø BDV2 DW VERT. TANK	
CUSTOMER:	
PROJECT:	
QUOTE NO:	CHK'D BY:
SCALE: 3/4" = 12"	DATE:
DWG. BY:	DWG. NO: 0500BDV2DW64

