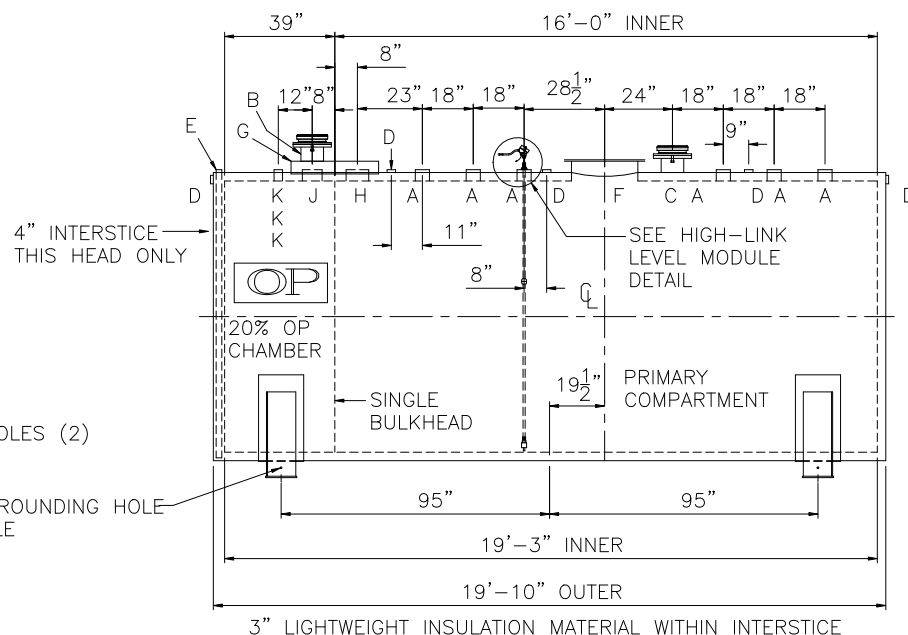
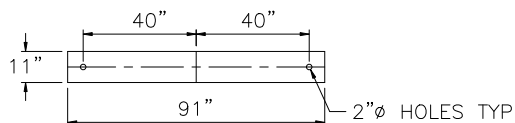
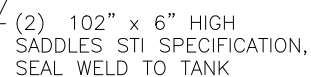
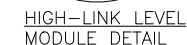


TOUCH UP OF FINISHED PAINT IS REQUIRED BY INSTALLATION CONTRACTOR. TOUCH UP PAINT SHIPPED WITH TANK.
SHIPPING LUGS AS NEEDED

(2) 8" FLANGED EMERGENCY VENTS

(1) HIGH-LINK LEVEL MODULE MODEL# LS_XEXD 108" LONG & BUSHING.



CAPACITY: 6,000 GALLONS
TYPE: FIREGUARD® CYLINDRICAL
FIREGUARD® IS A TRADEMARK OF THE STEEL TANK INSTITUTE
NO. REQ. --
OPERATING PRESSURE -- ATMOSPHERIC
SPECIFIC GRAVITY = 1.0
TANK MATERIAL -- MILD CARBON STEEL
THICKNESS -- INNER -- HEADS--5/16" SHELL--1/4"
THICKNESS -- OUTER -- HEADS-- 5/16" SHELL--1/4"
MIN. GAUGE OR THICKNESS (PER U.L. 2085)
CONSTRUCTION -- INNER -- LAP WELD OUTSIDE ONLY
CONSTRUCTION -- OUTER -- LAP WELD OUTSIDE ONLY
TANK TEST -- PER UL 2085
INT. FINISH -- NONE
EXT. FINISH -- SP-6 BLAST, FINISH PAINT WHITE
LABEL-- UL 2085 AND FIREGUARD® PER sti

LEGEND		
A	4" FEMALE FG COUPLING	G 31" LONG x 14" WIDE x 4" HIGH CLOSED TOP STEEL ENCLOSURE WELDED TO OUTER TANK
B	8" FFSO 150# FLANGE – PRIMARY EMERGENCY VENT USE ONLY	H 8" SCH 40 PIPE
C	8" FFSO 150# FLANGE THROUGH OUTER SHELL ONLY, MARK WITH SPECIAL WARNING LABEL INTERSTITIAL EMERGENCY VENT USE ONLY	J 6" FEMALE FIREGUARD COUPLING
D	2" FITTING THROUGH OUTER SHELL ONLY WITH CAST IRON PLUG– MFG USE ONLY	K 2" FEMALE FIREGUARD COUPLING
E	2" MONITOR PIPE WITH MALE NPT END	L –
F	24" x 1/4" PLATE TIGHT BOLT MANWAY WITH 1/8" THICK NEO–CORK GASKET	

NOTES:
STRIKER PLATES ARE NOT SUPPLIED ON
FIREGUARDS UNLESS SPECIFIED

