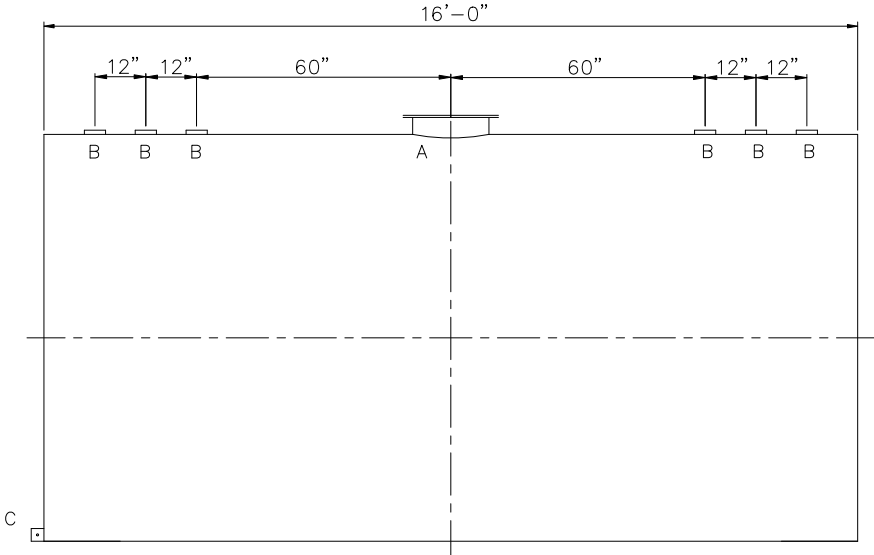
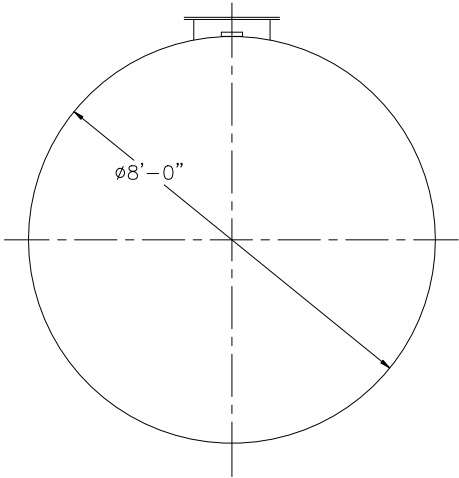


NOTE: ALL RIGHTS RESERVED. THIS DRAWING MUST NOT BE REPRODUCED IN ANY FORM WITHOUT THE WRITTEN PERMISSION OF HIGHLAND TANK. HIGHLAND TANK SHALL BE RESPONSIBLE ONLY FOR ITEMS INDICATED ON THIS FABRICATION DRAWING UNLESS OTHERWISE NOTED. CUSTOMER IS RESPONSIBLE FOR VERIFYING CORRECTNESS OF SIZE AND LOCATION OF FITTINGS, ACCESSORIES, AND COATINGS SHOWN ON THIS DRAWING.

TOUCH UP OF FINISHED PAINT IS REQUIRED BY INSTALLATION CONTRACTOR. TOUCH UP PAINT SHIPPED WITH TANK.

SHIPPING LUGS AS NEEDED



DESIGN DATA
CAPACITY – 6,000 GAL
TYPE – SINGLE WALL
NO. REQ. – –
OPERATING PRESSURE –ATMOSPHERIC
SPECIFIC GRAVITY = 1.0
TANK MATERIAL –MILD CARBON STEEL
THICKNESS – HEADS: 5/16"
THICKNESS – SHELL: 1/4"
CONSTRUCTION –LAP WELD OUTSIDE ONLY
TANK TEST –5 PSIG
INT. FINISH – NONE
EXT. FINISH –SHOP PRIMER
LABEL – UL 142

LEGEND	
A	18" LOOSE BOLT MANWAY [PRIMARY EMERGENCY VENT]
B	4" FITTING
C	FB–3"x 1/4"x3" WITH 5/8"Ø HOLE ON CL (GROUNDING LUG)
D	–
E	–
F	–

HIGHLAND TANK MFG CO.

Highland Tank

UNLESS NOTED, TOLERANCES ARE +/- 1"

6,000 GAL 96"Ø SW AG HORIZONTAL

CUSTOMER:

PROJECT:

QUOTE NO:

CHK'D BY:

SCALE: 3/8"=1'-0"

DATE:

DWG. BY:

DWG. NO.: 06000AHSW96