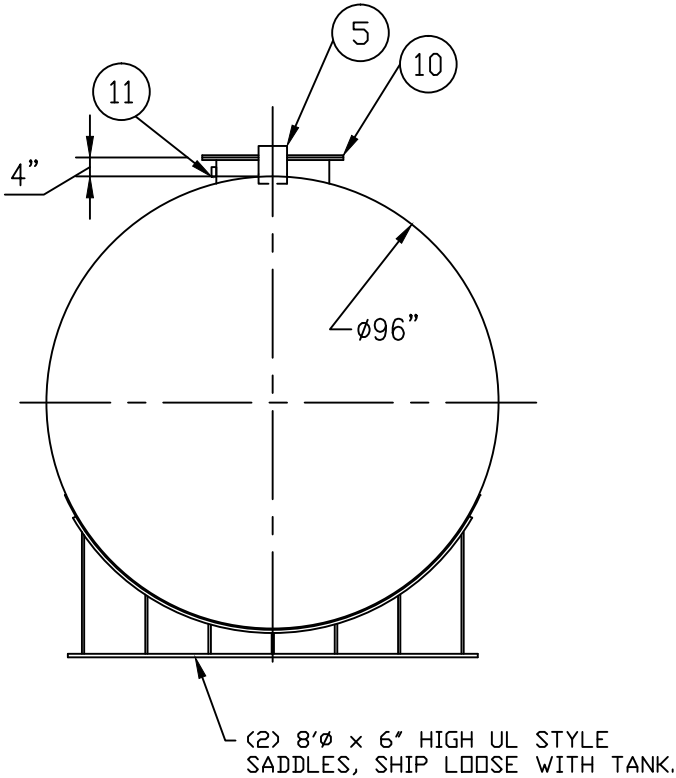


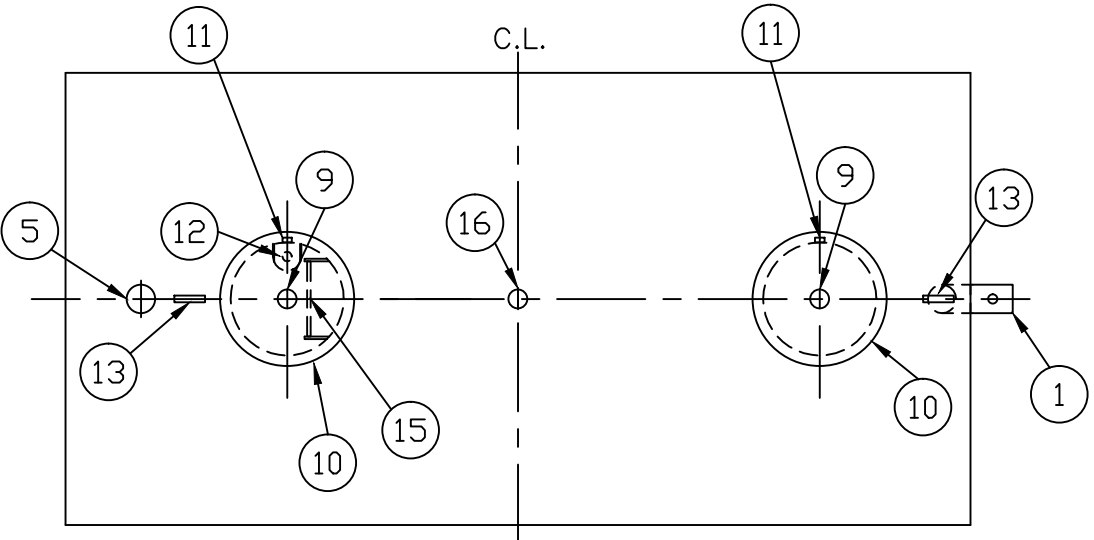
GENERAL SPECIFICATIONS

NO. REQ'D: (1)
CAPACITY: 6,000 GALLON
TYPE: SINGLE WALL, ABOVEGROUND
MATERIAL: MILD CARBON STEEL
GAUGE:
SHELL- 1/4"
HEADS- 5/16"

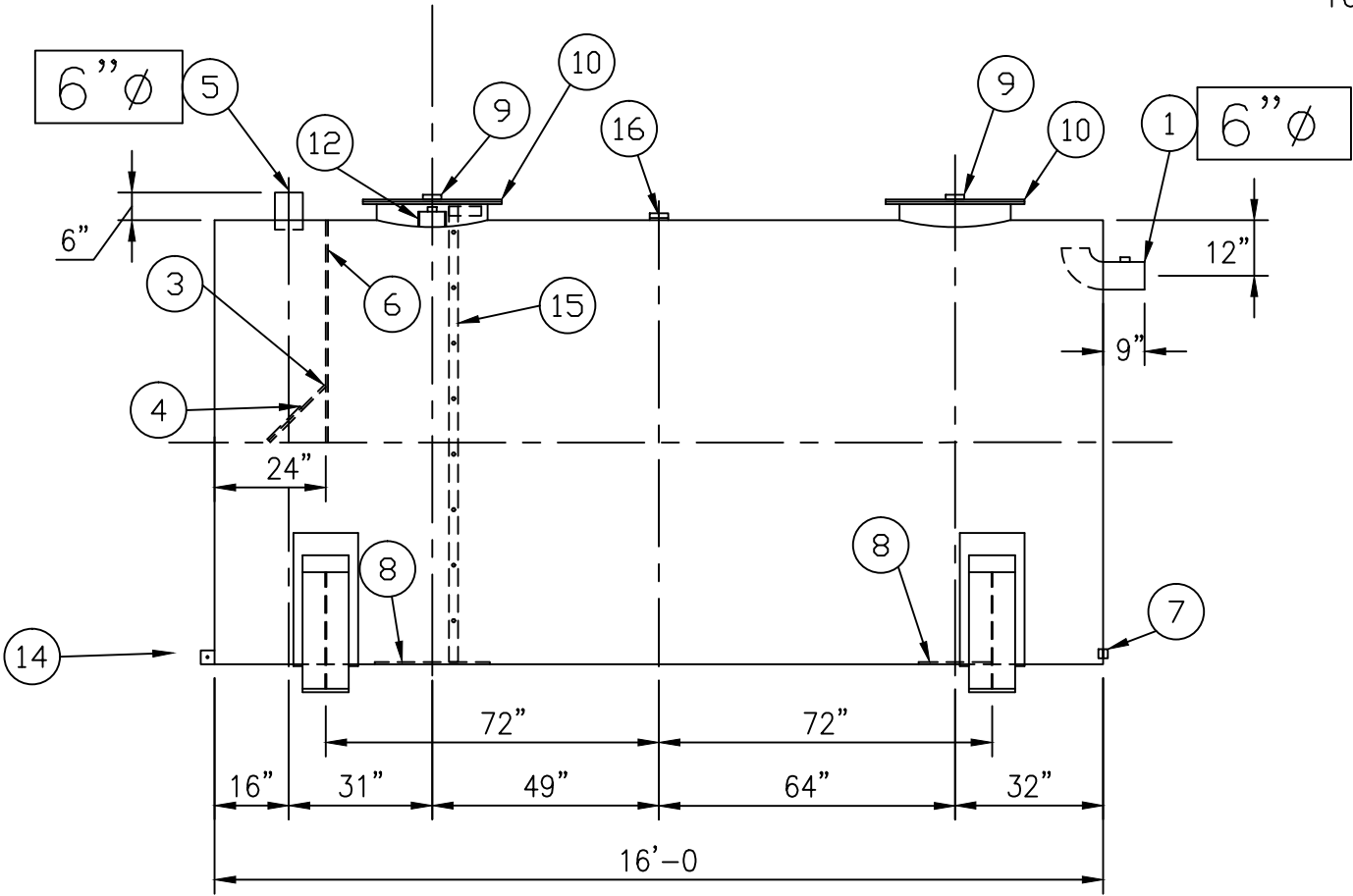
SURFACE PREP:
SSPC-SP 6 BLAST EXTERIOR, SSPC-SP 10 BLAST INTERIOR
COATING: MATERIAL / THICKNESS
EXTERIOR- WHITE URETHANE (3-5 MILS)
INTERIOR- HighDRO®-LINER PLUS POLYURETHANE (15 MILS)
CONSTRUCTION : LAP FIT & WELD ALL EXTERIOR SEAMS
OPERATING PRESSURE : ATMOSPHERIC
ALL VENT PIPING BY INSTALLER
LIFTING LUGS PLACED AS NEEDED PER FAB SHOP



END VIEW



PLAN




ELEVATION

PROVIDED EQUIPMENT

1. 6"Ø PIPE STUB W/ 2" NPT FOR VENT (OVERFLOW SKIMMER)
2. 2"Ø FTG. FOR VENT
3. VELOCITY HEAD DIFFUSION BAFFLE
4. WEAR PLATE
5. 6"Ø PIPE STUB (INLET)
6. UNDERFLOW BAFFLE
7. 2"Ø FULL CPLG. FOR PUMP MOUNTING
8. STRIKER PLATES
9. 4"Ø FTG. FOR GAUGE WITH PLUG
10. 24"Ø MANWAY
11. 2"Ø FTG. FOR CONDUIT
12. 2"Ø FTG. W/ MOUNT FOR LEVEL SENSOR
13. LIFTING LUG
14. GROUNDING LUG
15. HIGHLAND STANDARD INTERNAL LADDER
16. 4"Ø FTG. FOR VENT

NOTE :
ALL RIGHTS RESERVED. THIS DRAWING OR ANY PART THEREOF MUST NOT BE REPRODUCED IN ANY FORM WITHOUT THE WRITTEN PERMISSION OF HIGHLAND TANK.
HIGHLAND TANK SHALL BE RESPONSIBLE ONLY FOR ITEMS INDICATED ON THIS FABRICATION DRAWING UNLESS OTHERWISE NOTED. CUSTOMER IS RESPONSIBLE FOR VERIFYING CORRECTNESS OF SIZE / LOCATION OF FITTINGS , ACCESSORIES & COATINGS SHOWN ON THIS DRAWING

		Highland Tank®	
HighDRO® WATER STORAGE TANKS			
6,000 GALLON RAINWATER COLLECTION TANK			
CUSTOMER:			
PROJECT:			
QUOTE NO:		CHK'D BY:	
SCALE:	DATE:	DWG. BY:	DWG. NO:
NTS	9/17/10		06000AHSWDRCT96