

ITEM	DESCRIPTION
①	3" NORMAL VENT FITTING
②	8"-8 OZ. EMERGENCY VENT - SHIPPED LOOSE
③	VENT DEFLECTOR ASSEMBLY - SHIPPED LOOSE
④	4" FITTING
⑤	3" FITTING
⑥	3" FCPLG
⑦	1" OVERFLOW PIPE - SHIPPED LOOSE
⑧	1" PIPE UNION
⑨	4" FILL FITTING
⑩	FILL CONTAINMENT CHAMBER
⑪	DRIP PAN PLATFORM WITH 2" LIP
⑫	1/2" DRAIN FITTING
⑬	STAIRS, PLATFORM AND HANDRAIL-SHIPPED LOOSE
⑭	3/4" PUMPOUT PIPE
⑮	3" PIPE CAP SUMP
⑯	6" WF (3)

AUTHORIZATION

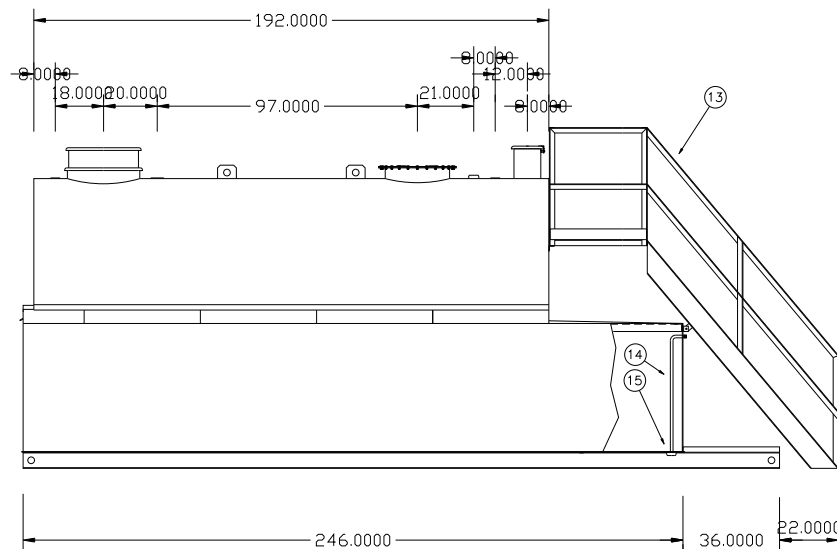
COMPANY NAME _____

APPROVED BY (PLEASE PRINT) _____

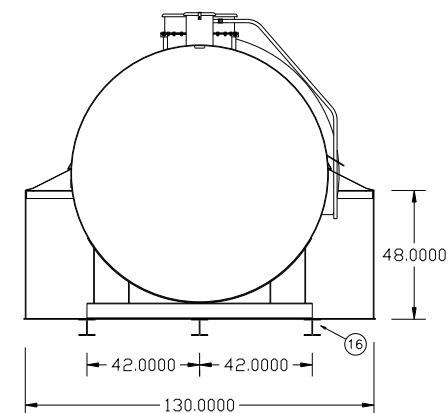
APPROVAL SIGNATURE _____

DATE _____

CONTRACT NO. _____



SECTION A-A



NOTES

1. PRIMARY TANK:
SHELL - 1/4" HEAD - 5/16"
CONTAINMENT: 1/4"
2. MATERIAL - MILD CARBON STEEL
3. TEST AT 5-7 PSIG.
4. ENTIRE UNIT UL LISTED.
5. EXTERIOR FINISH -
6. INTERIOR LINING -
7. ALL DIMENSIONS APPROXIMATE.

All rights reserved. This drawing or any part thereof must not be reproduced in any form without the written permission of Areo-Power Utilized Fueler, Inc.

AREO-POWER®

TITLE	REV #	REV DATE
6000 GAL. AREO FUELER		
U.S. PATENT # 4895272	CANADIAN PATENT APPLIED FOR	
SCALE	DATE	DRAWN BY
1/4"=1'	8/1/92	JF
	DWG. NO.	
	APB660	