

## GENERAL SPECIFICATIONS

QUANTITY: ONE (1)  
 MODEL: RCT-6000-72  
 CAPACITY: 6,000 GALLONS  
 TYPE: SINGLE WALL, HIGHGUARD, UNDERGROUND  
 MATERIAL: 1/4" CARBON STEEL  
 GAUGE OF MATERIAL BASED ON 60" MAX. BURIAL DEPTH  
 LAP FIT AND WELD INTERIOR AND EXTERIOR SEAMS  
 TANK TEST: 3-5 PSI AIR TEST  
 SURFACE PREP: SSPC-SP 10 BLAST INTERIOR SURFACES  
 SSPC-SP 6 BLAST EXTERIOR SURFACES  
 COATING, EXTERIOR: HIGHGUARD POLYURETHANE-75 MILS  
 COATING, INTERIOR:  
 HighDRO®-LINER PLUS POLYURETHANE - 15 MILS  
 OPERATING PRESSURE: ATMOSPHERIC

## PROVIDED EQUIPMENT

- 8"Ø SCH 40 PIPE STUB - INLET
- 8"Ø SCH 40 PIPE STUB - OVERFLOW
- 8"Ø 45° DIFFUSION ELBOW
- UNDERFLOW BAFFLE - 1/4"
- DIFFUSION PLATE - 1/4"
- 16" x 16" WEAR PLATE - 1/4"
- STRIKER PLATE
- STAINLESS STEEL LADDER - 16" WIDE
- 24"Ø MANWAY WITH BOLT-ON RISER
- 2" HC - VENT
- 2" FC FOR WIRING
- 4" HC GAUGE FTG
- 36"Ø GRADE-LEVEL MANWAY - SHIPPED LOOSE
- 36" x 36" MANWAY WITH BOLT-ON EXTENSION
- 48" x 48" GRADE-LEVEL MANWAY - SHIPPED LOOSE
- 4" HC TANK VENT
- (6) CDA-15 CONCRETE DEADMAN
- (6) POLYESTER HOLD-DOWN STRAPS

THIS DRAWING IS SUBJECT TO CHANGE AT THE DISCRETION OF THE MANUFACTURER. CONTACT HIGHLAND TANK FOR THE MOST UP-TO-DATE INFORMATION AND DRAWINGS OF OUR PRODUCTS.



# Highland Tank®

HighDRO®-PURE RAINWATER HARVESTING SYSTEM  
 6,000 GALLON CISTERN TANK

CUSTOMER:

PROJECT:

QUOTE NO:

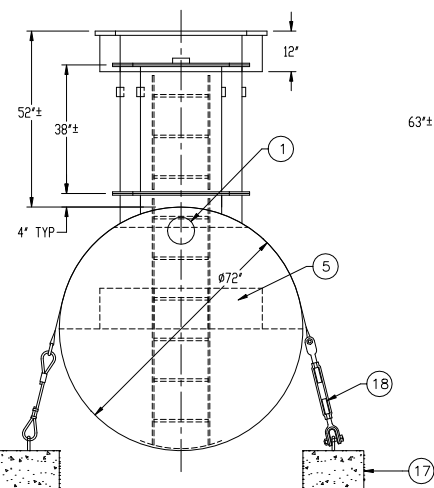
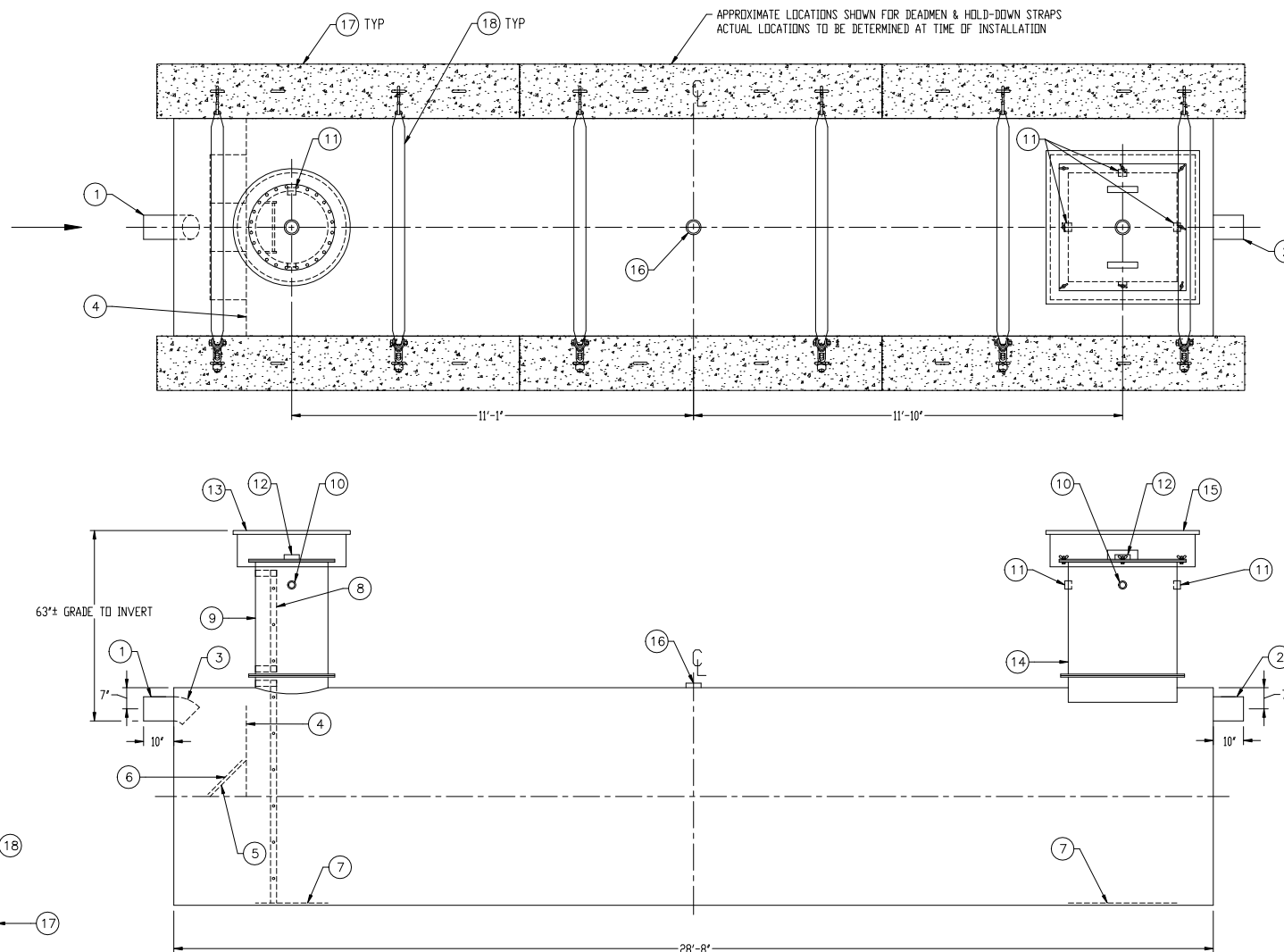
ORDER#:

SCALE: DATE: DWG. BY: DWG. NO:

NTS 1/24/17 MGS

RCT-6000-72

DIMENSION TOLERANCE: ± 1"



NOTE:  
 ALL RIGHTS RESERVED. THIS DRAWING, OR ANY PART THEREOF, MUST NOT  
 BE REPRODUCED IN ANY FORM WITHOUT WRITTEN PERMISSION FROM  
 HIGHLAND TANK. UNLESS OTHERWISE NOTED, HIGHLAND TANK SHALL BE  
 RESPONSIBLE ONLY FOR ITEMS INDICATED ON THIS FABRICATION DRAWING.  
 THE CUSTOMER IS RESPONSIBLE FOR VERIFYING THE CORRECTNESS OF  
 THE TYPE, SIZE, AND LOCATION OF ALL FITTINGS, ACCESSORIES, AND  
 COATINGS SHOWN IN THIS DRAWING.