

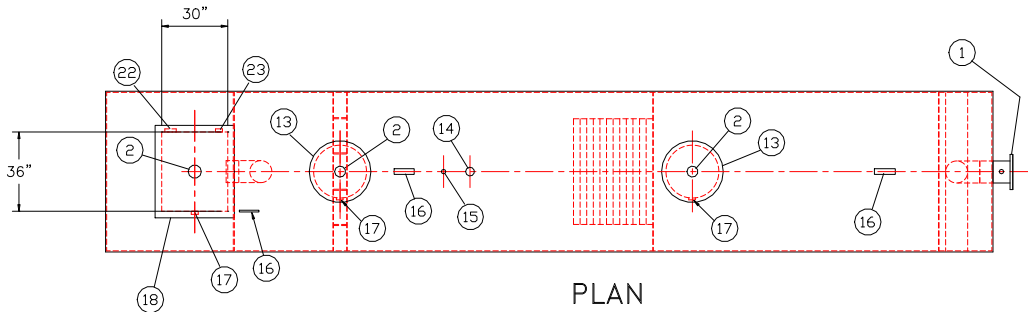
GENERAL SPECIFICATIONS

NO. REQ'D: (1)
CAPACITY: 6000 GALLONS
TYPE: HTC-J, HIGHGUARD, SINGLE WALL
MATERIAL: MILD CARBON STEEL
FLOW RATE: 600 GPM
GAUGE: BASED ON 60" MAX BURIAL
SHELL- 1/4"
HEADS- 1/4"

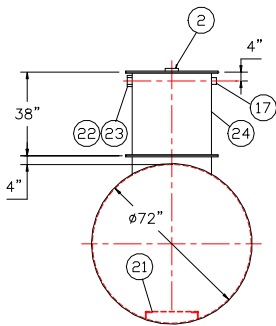
SURFACE PREP:
SSPC NO.6 BLAST ALL EXTERIOR SURFACES
SSPC NO.10 BLAST ALL INTERIOR OF WATER CHAMBER ONLY

| COATING: | MATERIAL | THICKNESS |
|-----------|---------------------------|-----------|
| EXTERIOR- | HIGHGUARD | (75 MILS) |
| INTERIOR- | POLYURETHANE | (15 MILS) |
| | INTERIOR OF WATER CHAMBER | |

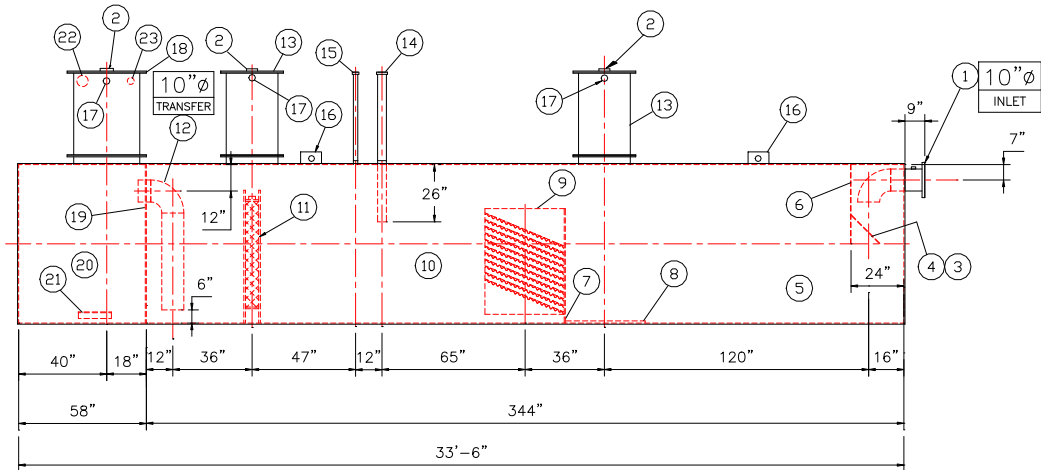
CONSTRUCTION :
LAP FIT & WELD ALL EXTERIOR SEAMS
OPERATING PRESSURE : ATMOSPHERIC



PLAN



END VIEW



ELEVATION

PROVIDED EQUIPMENT

- 150# R.F.S.O. FLANGE W/ 2" FNPT FOR VENT
- 4" FNPT FOR GAUGE WITH PLUG
- VELOCITY HEAD DIFFUSION BAFFLE
- WEAR PLATE
- SEDIMENT CHAMBER
- UNDERFLOW BAFFLE (REMOVABLE)
- SLUDGE BAFFLE
- STRIKER PLATES
- PARALLEL CORRUGATED PLATE COALESCER. CORELLA PVC PLATES (3" PLATE SPACING)
- OIL/WATER SEPARATOR CHAMBER
- 6" THICK PETROSCREEN COALESCER MATERIAL INSTALLED W/ PULL ROD SHIPPED LOOSE
- STEEL TRANSFER PIPE W/ DOWNCOMER
- 24" MANWAY WITH NEO-CORK GASKETS. BOLT-ON EXTENSION SHIPPED LOOSE
- 4" FNPT FOR OIL PUMP-OUT WITH INTERNAL PVC PIPE INSTALLED & RISER PIPE SHIPPED LOOSE
- 2" FNPT FOR LEVEL SENSOR WITH RISER PIPE SHIPPED LOOSE
- LIFTING LUG
- 2" FNPT FOR VENT
- RECTANGULAR MANWAY WITH CLOSED CELL SPONGE GASKET. BOLT-ON EXTENSION SHIPPED LOOSE
- 7 GA. BULKHEAD
- EFFLUENT WATER CHAMBER
- PUMP MOUNT
- 4" FNPT FOR EFFLUENT PUMP CONDUIT AND WIRING
- 2" FNPT FOR EFFLUENT LEVEL SENSOR CONDUIT AND WIRING

ANCILLARY PROVIDED EQUIPMENT

- 24" NEO-CORK MANWAY GASKETS
- SETS OF NUTS/BOLTS/WASHERS FOR 24" MANWAY
- 30"x36" CLOSED CELL FOAM MANWAY GASKET
- 30"x36" RUBBER RIBBON MANWAY GASKET
- SETS OF NUTS/BOLTS/WASHERS FOR 30"x36" MANWAY

NOTES

- POLYURETHANE HIGHGUARD TANK IS NOT APPROVED FOR THE STORAGE OF HEATED PRODUCTS
- ALL VENT PIPING BY INSTALLER
- 15000 VOLT SPARK TEST PROVIDED AT FACTORY
- CUSTOMER TO PROVIDE EFFLUENT PUMPING INFORMATION FOR PROPER PUMP SIZING & PUMPOUT DESIGN

REVISIONS



Highland Tank

U.S. Patent #4,722,800 Canadian Patent # 1,296,263

6000 GALLON OIL WATER SEPARATOR
HTC-J, HIGHGUARD, SINGLE WALL

CUSTOMER:

PROJECT:

QUOTE NO:

CHK'D BY:

UNLESS OTHERWISE SPECIFIED DIMENSIONS ARE IN INCHES
TOLERANCES ARE + OR - 1"

SCALE: 1/4"=1'-0"

DATE:

DWG. BY:

DWG. NO.:

06000HGSWHTCJ

NOTE :
ALL RIGHTS RESERVED. THIS DRAWING OR ANY PART THEREOF MUST NOT BE REPRODUCED IN ANY FORM WITHOUT THE WRITTEN PERMISSION OF HIGHLAND TANK.
HIGHLAND TANK SHALL BE RESPONSIBLE ONLY FOR ITEMS INDICATED ON THIS FABRICATION DRAWING UNLESS OTHERWISE NOTED. CUSTOMER IS RESPONSIBLE FOR VERIFYING CORRECTNESS OF SIZE / LOCATION OF FITTINGS , ACCESSORIES & COATINGS SHOWN ON THIS DRAWING

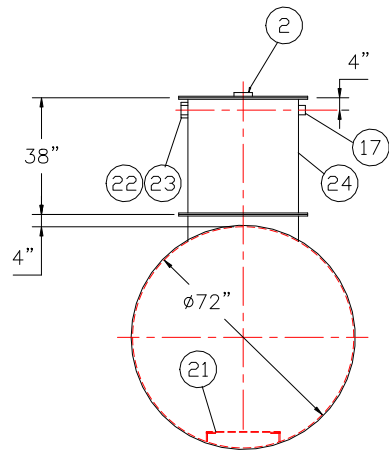
GENERAL SPECIFICATIONS

NO. REQ'D: (1)
CAPACITY: 6000 GALLONS
TYPE: HTC-J, HIGHGUARD, SINGLE WALL
MATERIAL: MILD CARBON STEEL
FLOW RATE: 600 GPM
GAUGE: BASED ON 60" MAX BURIAL
SHELL- 1/4"
HEADS- 1/4"

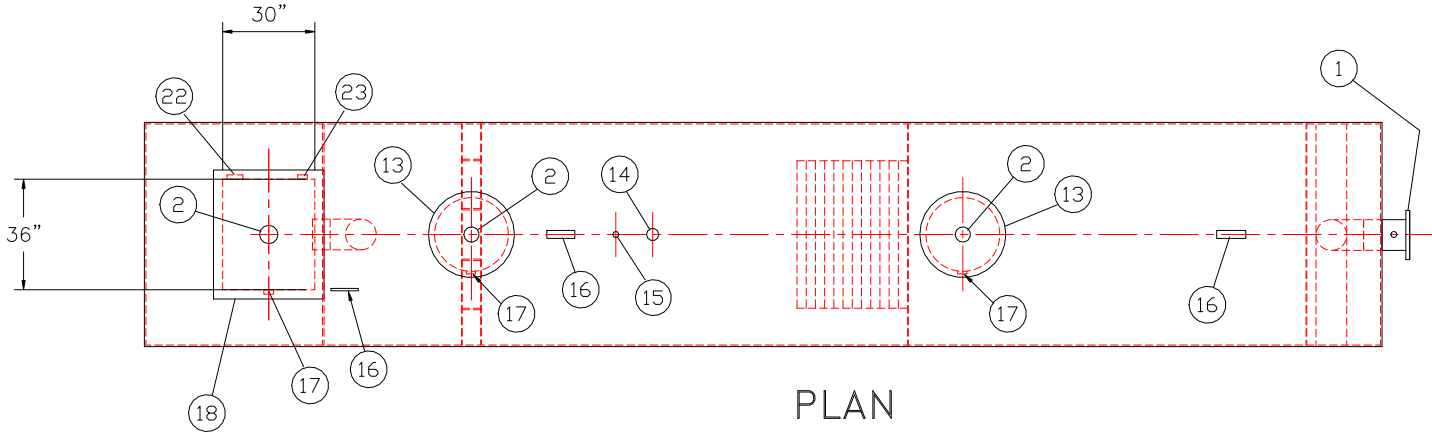
SURFACE PREP:
SSPC NO.6 BLAST ALL EXTERIOR SURFACES
SSPC NO.10 BLAST ALL INTERIOR OF WATER CHAMBER ONLY

| COATING: | MATERIAL | THICKNESS |
|-----------|---------------------------|-----------|
| EXTERIOR- | HIGHGUARD | (75 MILS) |
| INTERIOR- | POLYURETHANE | (15 MILS) |
| | INTERIOR OF WATER CHAMBER | |

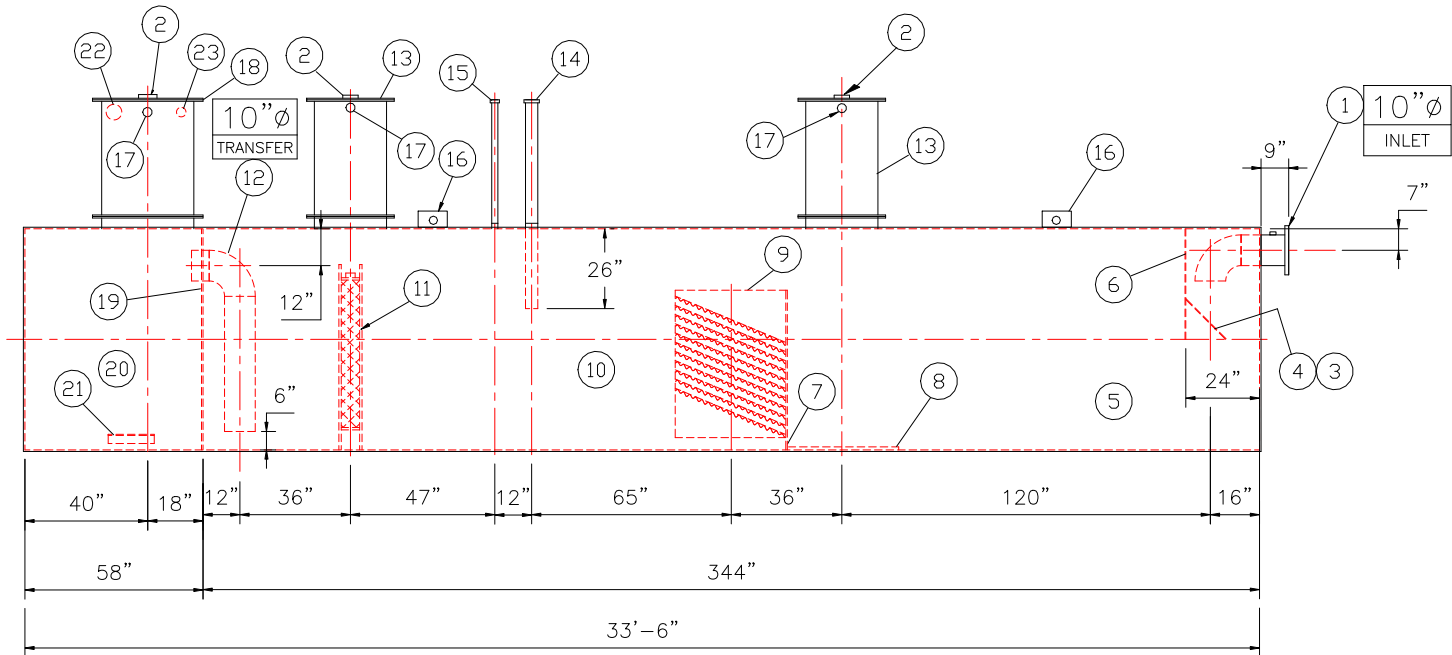
CONSTRUCTION :
LAP FIT & WELD ALL EXTERIOR SEAMS
OPERATING PRESSURE : ATMOSPHERIC



END VIEW



PLAN



ELEVATION

PROVIDED EQUIPMENT

- 150# R.F.S.O. FLANGE W/ 2" FNPT FOR VENT
- 4"Ø FNPT FOR GAUGE WITH PLUG
- VELOCITY HEAD DIFFUSION BAFFLE
- WEAR PLATE
- SEDIMENT CHAMBER
- UNDERFLOW BAFFLE (REMOVABLE)
- SLUDGE BAFFLE
- STRIKER PLATES
- PARALLEL CORRUGATED PLATE COALESCER. CORELLA PVC PLATES (3" PLATE SPACING)
- OIL/WATER SEPARATOR CHAMBER
- 6" THICK PETROSCREEN COALESCER MATERIAL INSTALLED W/ PULL ROD SHIPPED LOOSE
- STEEL TRANSFER PIPE W/ DOWNCOMER
- 24"Ø MANWAY WITH NEO-CORK GASKETS. BOLT-ON EXTENSION SHIPPED LOOSE
- 4"Ø FNPT FOR OIL PUMP-OUT WITH INTERNAL PVC PIPE INSTALLED & RISER PIPE SHIPPED LOOSE
- 2"Ø FNPT FOR LEVEL SENSOR WITH RISER PIPE SHIPPED LOOSE
- LIFTING LUG
- 2"Ø FNPT FOR VENT
- RECTANGULAR MANWAY WITH CLOSED CELL SPONGE GASKET. BOLT-ON EXTENSION SHIPPED LOOSE
- 7 GA. BULKHEAD
- EFFLUENT WATER CHAMBER
- PUMP MOUNT
- 4" FNPT FOR EFFLUENT PUMP CONDUIT AND WIRING
- 2" FNPT FOR EFFLUENT LEVEL SENSOR CONDUIT AND WIRING

ANCILLARY PROVIDED EQUIPMENT

- 24" NEO-CORK MANWAY GASKETS
- SETS OF NUTS/BOLTS/WASHERS FOR 24" MANWAY
- 30"x36" CLOSED CELL FOAM MANWAY GASKET
- 30"x36" RUBBER RIBBON MANWAY GASKET
- SETS OF NUTS/BOLTS/WASHERS FOR 30"x36" MANWAY

NOTES

- POLYURETHANE HIGHGUARD TANK IS NOT APPROVED FOR THE STORAGE OF HEATED PRODUCTS
- ALL VENT PIPING BY INSTALLER
- 15000 VOLT SPARK TEST PROVIDED AT FACTORY
- CUSTOMER TO PROVIDE EFFLUENT PUMPING INFORMATION FOR PROPER PUMP SIZING & PUMPOUT DESIGN

NOTE :
ALL RIGHTS RESERVED. THIS DRAWING OR ANY PART THEREOF MUST NOT BE REPRODUCED IN ANY FORM WITHOUT THE WRITTEN PERMISSION OF HIGHLAND TANK.
HIGHLAND TANK SHALL BE RESPONSIBLE ONLY FOR ITEMS INDICATED ON THIS FABRICATION DRAWING UNLESS OTHERWISE NOTED. CUSTOMER IS RESPONSIBLE FOR VERIFYING CORRECTNESS OF SIZE / LOCATION OF FITTINGS , ACCESSORIES & COATINGS SHOWN ON THIS DRAWING

UNLESS OTHERWISE SPECIFIED DIMENSIONS ARE IN INCHES
TOLERANCES ARE + OR - 1"

SCALE:
1/4"=1'-0"

DATE:

DWG. BY:

CHK'D BY:

QUOTE NO:

DWG. NO.:

06000HGSWHTCJ

REVISIONS



Highland Tank

U.S. Patent #4,722,800 Canadian Patent # 1,296,263

6000 GALLON OIL WATER SEPARATOR
HTC-J, HIGHGUARD, SINGLE WALL

CUSTOMER:

PROJECT:

QUOTE NO: