

GENERAL SPECIFICATIONS

NO. REQ'D: (1)

CAPACITY: 6000 GALLONS

TYPE: RECTANGULAR, HTC-G, ABOVEGROUND, SINGLEWALL

MATERIAL: MILD CARBON STEEL

FLOW RATE: 600 GPM

Gauge:

SHELL- 1/4"

HEADS- 1/4"

SURFACE PREP:

SSPC NO.10 BLAST ALL INTERIOR SURFACES

SSPC NO.6 BLAST ALL EXTERIOR SURFACES

COATING: MATERIAL THICKNESS

EXTERIOR- CHEMPRIME 3001 (3-6 MILS)

CHEMLINE 3300 (2-3 MILS)

TOP COAT "WHITE"

INTERIOR- CHEMLINE 4200 PW (15 MILS)

CONSTRUCTION:

BUTT FIT & WELD ALL CORNERS IN & OUT

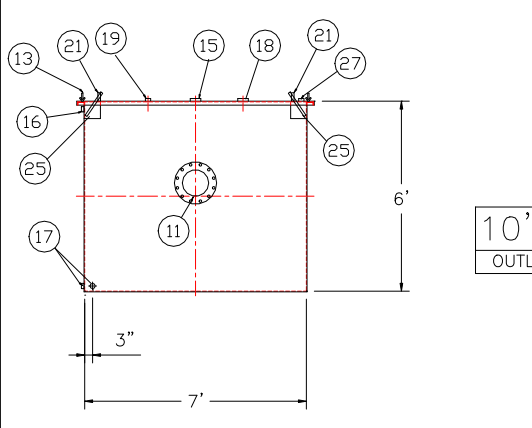
NOTES

1. ALL INTERNAL MATERIAL IS 10 GA

2. ALL THREADED DRAIN FITTINGS TO HAVE STEEL THREADED PLUGS AND COATED WITH TANK

3. ALL OTHER THREADED FITTINGS TO HAVE PVC THREADED PLUGS

4. LIFTING LUGS HAVE REINFORCING PLATES

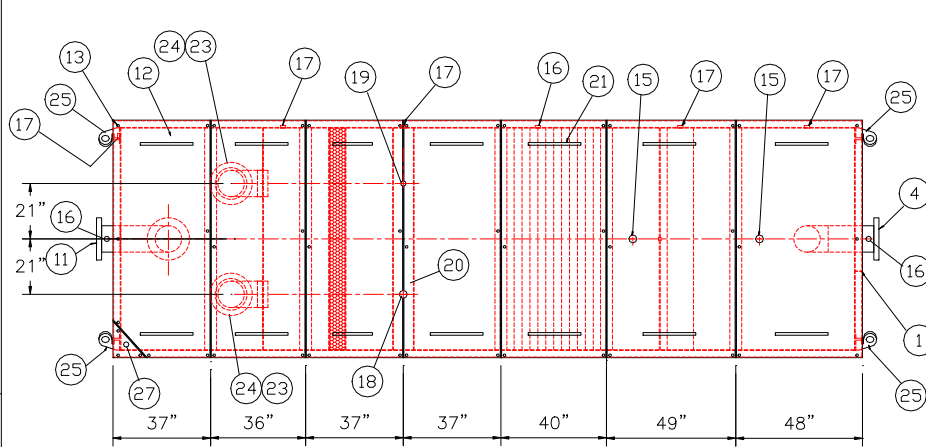


END VIEW

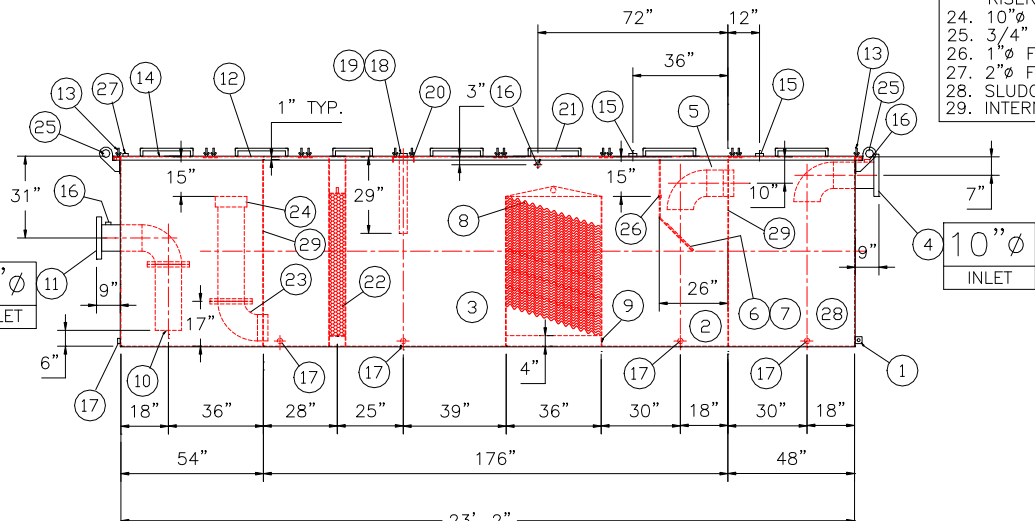
NOTE :

ALL RIGHTS RESERVED. THIS DRAWING OR ANY PART THEREOF MUST NOT BE REPRODUCED IN ANY FORM WITHOUT THE WRITTEN PERMISSION OF HIGHLAND TANK.

HIGHLAND TANK SHALL BE RESPONSIBLE ONLY FOR ITEMS INDICATED ON THIS FABRICATION DRAWING UNLESS OTHERWISE NOTED. CUSTOMER IS RESPONSIBLE FOR VERIFYING CORRECTNESS OF SIZE / LOCATION OF FITTINGS , ACCESSORIES & COATINGS SHOWN ON THIS DRAWING



PLAN VIEW



ELEVATION

PROVIDED EQUIPMENT

1. 3"x3"x1/4" FLAT W/ 9/16"Ø HOLE DRILLED IN CENTER (GROUNDING LUG)

2. SEDIMENT CHAMBER

3. OIL WATER SEPARATOR CHAMBER

4. 150# RFSSO FLANGED INLET

5. STEEL TRANSFER ELBOW PIPING

6. VELOCITY HEAD DIFFUSION BAFFLE - 10GA

7. WEAR PLATE - 1/4"

8. REMOVABLE PARALLEL CORRUGATED PLATE COALESCER (CORELLA PVC PLATES) 1" PLATE SPACING

9. SLUDGE BAFFLE - 10GA

10. FLANGED PVC OUTLET DOWNCOMER PIPE

11. 150# RFSSO FLANGED OUTLET W/ INTERNAL STEEL ELBOW AND FLANGE

12. (7) PIECE COVER W/ 5/8" BOLT HOLES - 7 GA

13. NUTS & BOLTS W/ LARGE WING NUTS-TYP. (CORROSION RESISTANT)

14. GASKET MATERIAL (FOR EACH REMOVABLE COVER)

15. 3"Ø FNPT (CLEAN-OUT)

16. 2"Ø FNPT (VENT)

17. 2"Ø FNPT HALF COUPLING (DRAIN) W/ STEEL PLUG

18. 3"Ø FNPT FULL COUPLING W/ 3" Ø INTERNAL PVC PIPE (OIL PUMPOUT)

19. 2"Ø FNPT HALF COUPLING (INTERFACE LEVEL SENSOR)

20. 7GA. CROSSMEMBER 9" WIDE FOR OIL PUMP-OUT AND LEVEL SENSOR FTG.

21. HANDLES PER H.T. STANDARD

22. 6" THICK REMOVABLE PETROSCREEN CARTRIDGE COALESCER

23. 10"Ø STEEL ELBOW W/ FLANGE WELDED TO TOP FOR PVC RISER PIPES

24. 10"Ø ADJUSTABLE FERNCO COUPLING

25. 3/4" THICK LIFTING LUG ANGLED TOWARD CENTER


26. 1"Ø FNPT COUPLING W/ PLUG

27. 2"Ø FNPT HALF COUPLING (SPARE)

28. SLUDGE CHAMBER

29. INTERNAL BULKHEAD

REVISIONS



Highland Tank

U.S. Patent #4,722,800 Canadian Patent # 1,296,263

6000 GALLON OIL WATER SEPARATOR
RECTANGULAR, HTC-G, SINGLE WALL

CUSTOMER:

PROJECT:

QUOTE NO:

CHK'D BY:

SCALE: 1/4"=1'-0"

DATE: 1-31-14

DWG. BY:

DWG. NO.: 06000RECSWHTCG

COATING: MATERIAL THICKNESS

EXTERIOR- CHEMPRIME 3001 (3-6 MILS)

CHEMLINE 3300 (2-3 MILS)

TOP COAT "WHITE"

INTERIOR- CHEMLINE 4200 PW (15 MILS)

1. ALL INTERNAL MATERIAL IS 10 GA
2. ALL THREADED DRAIN FITTINGS TO HAVE STEEL THREADED PLUGS AND COATED WITH TANK
3. ALL OTHER THREADED FITTINGS TO HAVE PVC THREADED PLUGS
4. LIFTING LUGS HAVE REINFORCING PLATES

12. (7) PIECE COVER W/ 5/8" BOLT HOLES - 7 GA

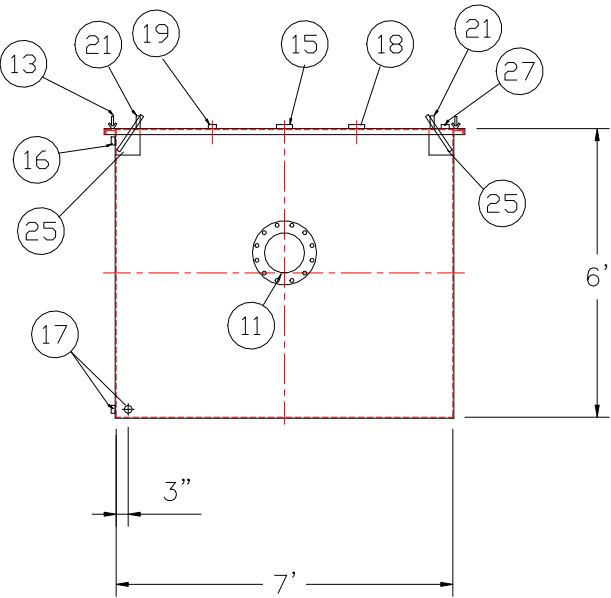
22. 6" THICK REMOVABLE PETROSCREEN CARTRIDGE COALESCER
25. 3/4" THICK LIFTING LUG ANGLED TOWARD CENTER
27. 2"Ø FNPT HALF COUPLING (SPARE)

GENERAL SPECIFICATIONS

NO. REQ'D: (1)
CAPACITY: 6000 GALLONS
TYPE: RECTANGULAR, HTC-G, ABOVEGROUND, SINGLEWALL
MATERIAL: MILD CARBON STEEL
FLOW RATE: 600 GPM
GAUGE:
SHELL- 1/4"
HEADS- 1/4"
SURFACE PREP:
SSPC NO.10 BLAST ALL INTERIOR SURFACES
SSPC NO.6 BLAST ALL EXTERIOR SURFACES
COATING: MATERIAL THICKNESS
EXTERIOR- CHEMPRIME 3001 (3-6 MILS)
CHEMLINE 3300 (2-3 MILS)
TOP COAT "WHITE"
INTERIOR- CHEMLINE 4200 PW (15 MILS)
CONSTRUCTION:
BUTT FIT & WELD ALL CORNERS IN & OUT

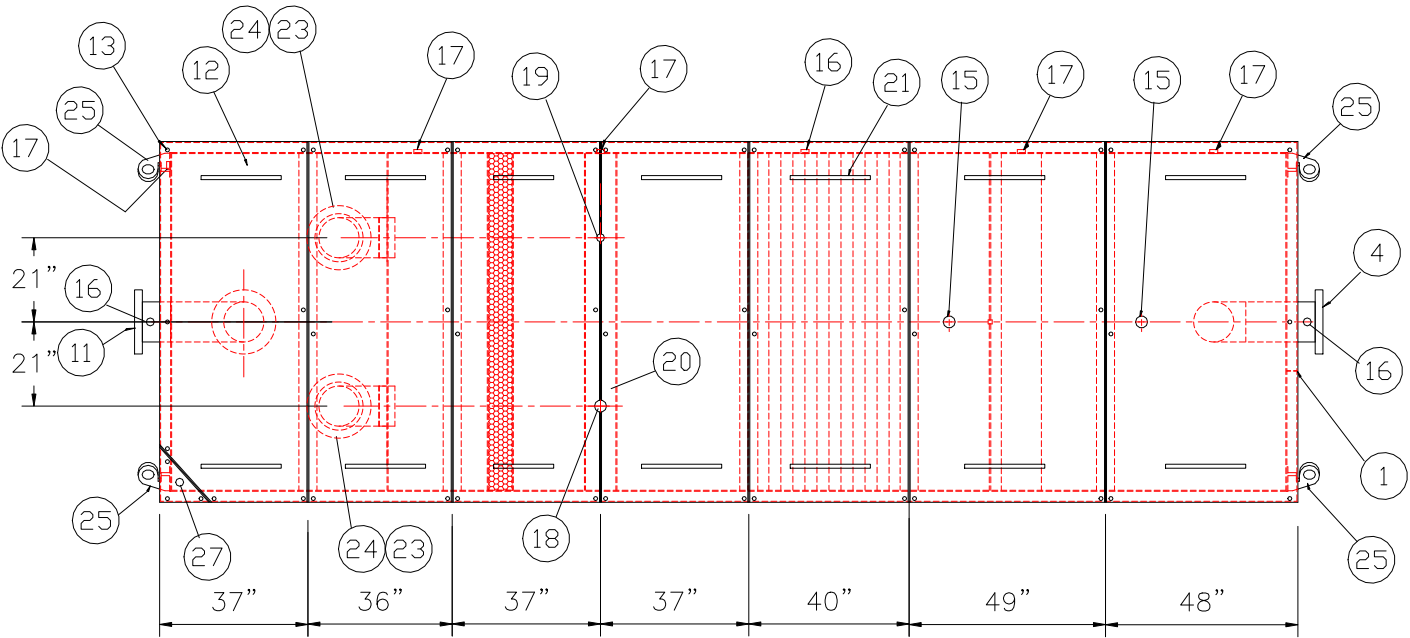
NOTES

- 1. ALL INTERNAL MATERIAL IS 10 GA
- 2. ALL THREADED DRAIN FITTINGS TO HAVE STEEL THREADED PLUGS AND COATED WITH TANK
- 3. ALL OTHER THREADED FITTINGS TO HAVE PVC THREADED PLUGS
- 4. LIFTING LUGS HAVE REINFORCING PLATES



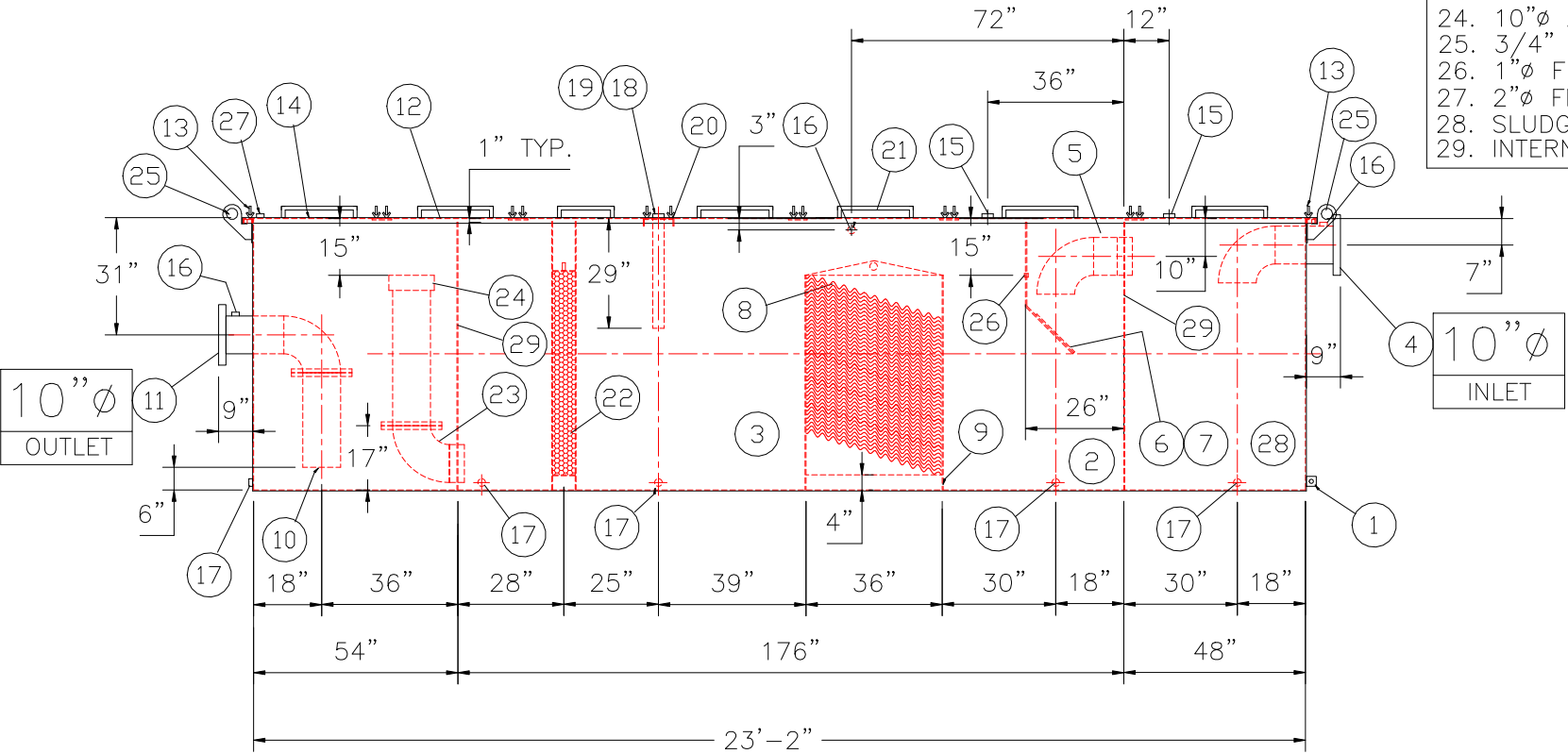
END VIEW

NOTE :
ALL RIGHTS RESERVED. THIS DRAWING OR ANY PART THEREOF MUST NOT BE REPRODUCED IN ANY FORM WITHOUT THE WRITTEN PERMISSION OF HIGHLAND TANK.
HIGHLAND TANK SHALL BE RESPONSIBLE ONLY FOR ITEMS INDICATED ON THIS FABRICATION DRAWING UNLESS OTHERWISE NOTED. CUSTOMER IS RESPONSIBLE FOR VERIFYING CORRECTNESS OF SIZE / LOCATION OF FITTINGS , ACCESSORIES & COATINGS SHOWN ON THIS DRAWING



REMOVABLE COVERS (7) REQUIRED

PLAN VIEW



ELEVATION

PROVIDED EQUIPMENT

- 1. 3"x3"x1/4" FLAT W/ 9/16"Ø HOLE DRILLED IN CENTER (GROUNDING LUG)
- 2. SEDIMENT CHAMBER
- 3. OIL WATER SEPARATOR CHAMBER
- 4. 150# RFSO FLANGED INLET
- 5. STEEL TRANSFER ELBOW PIPING
- 6. VELOCITY HEAD DIFFUSION BAFFLE - 10GA
- 7. WEAR PLATE - 1/4"
- 8. REMOVABLE PARALLEL CORRUGATED PLATE COALESCER (CORELLA PVC PLATES) 1" PLATE SPACING
- 9. SLUDGE BAFFLE - 10GA
- 10. FLANGED PVC OUTLET DOWNCOMER PIPE
- 11. 150# RFSO FLANGED OUTLET W/ INTERNAL STEEL ELBOW AND FLANGE
- 12. (7) PIECE COVER W/ 5/8" BOLT HOLES - 7 GA
- 13. NUTS & BOLTS W/ LARGE WING NUTS-TYP. (CORROSION RESISTANT)
- 14. GASKET MATERIAL (FOR EACH REMOVABLE COVER)
- 15. 3"Ø FNPT (CLEAN-OUT)
- 16. 2"Ø FNPT (VENT)
- 17. 2"Ø FNPT HALF COUPLING (DRAIN) W/ STEEL PLUG
- 18. 3"Ø FNPT FULL COUPLING W/ 3" Ø INTERNAL PVC PIPE (OIL PUMPOUT)
- 19. 2"Ø FNPT HALF COUPLING (INTERFACE LEVEL SENSOR)
- 20. 7GA. CROSSMEMBER 9" WIDE FOR OIL PUMP-OUT AND LEVEL SENSOR FTG.
- 21. HANDLES PER H.T. STANDARD
- 22. 6" THICK REMOVABLE PETROSCREEN CARTRIDGE COALESCER
- 23. 10"Ø STEEL ELBOW W/ FLANGE WELDED TO TOP FOR PVC RISER PIPES
- 24. 10"Ø ADJUSTABLE FERNCO COUPLING
- 25. 3/4" THICK LIFTING LUG ANGLED TOWARD CENTER
- 26. 1"Ø FNPT COUPLING W/ PLUG
- 27. 2"Ø FNPT HALF COUPLING (SPARE)
- 28. SLUDGE CHAMBER
- 29. INTERNAL BULKHEAD

REVISIONS



Highland Tank

U.S. Patent #4,722,800 Canadian Patent # 1,296,263

6000 GALLON OIL WATER SEPARATOR
RECTANGULAR, HTC-G, SINGLE WALL

CUSTOMER:

PROJECT:

QUOTE NO:

CHK'D BY:

UNLESS OTHERWISE SPECIFIED DIMENSIONS ARE IN INCHES
TOLERANCES ARE + OR - 1"

SCALE:
1/4"=1'-0"

DATE:
1-31-14

DWG. BY:

DWG. NO.:
06000RECSWHTCG