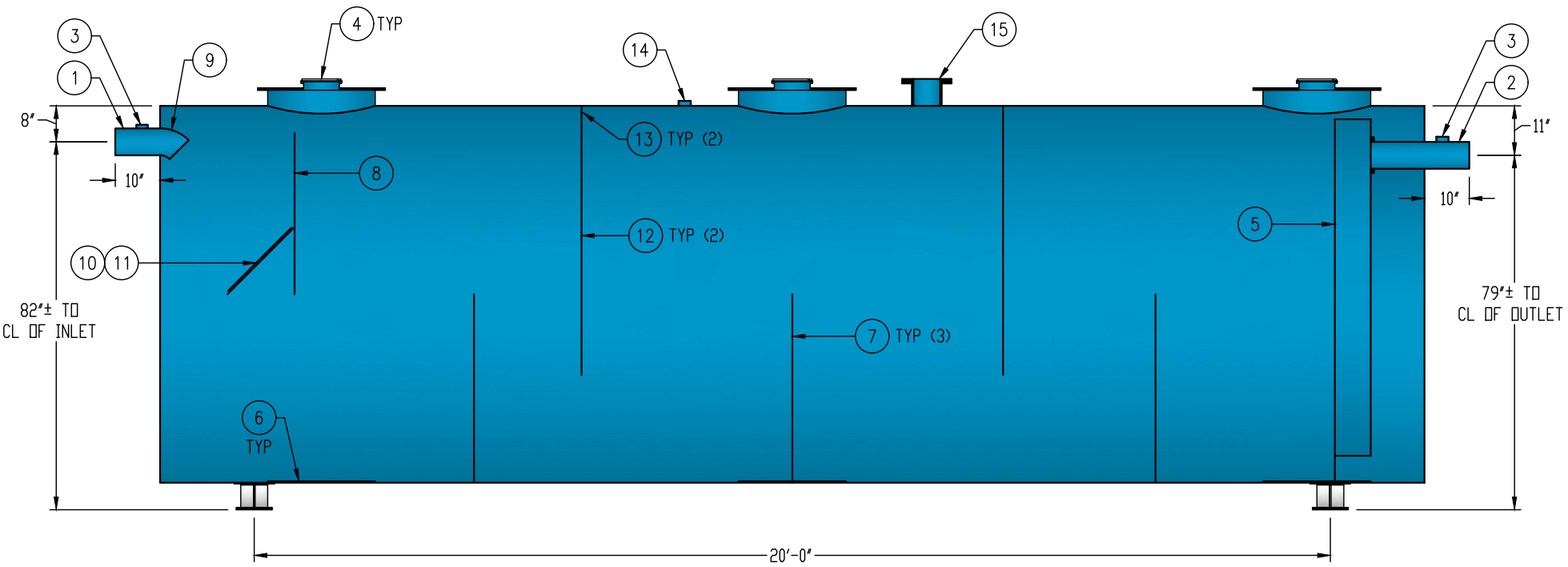
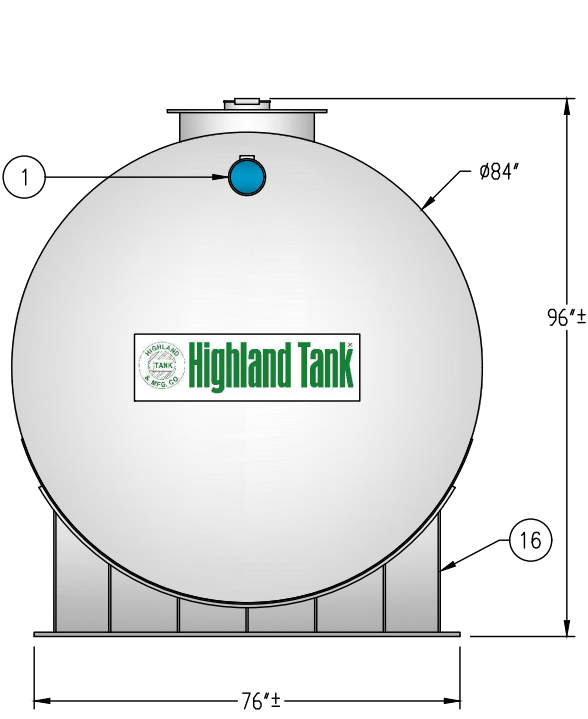
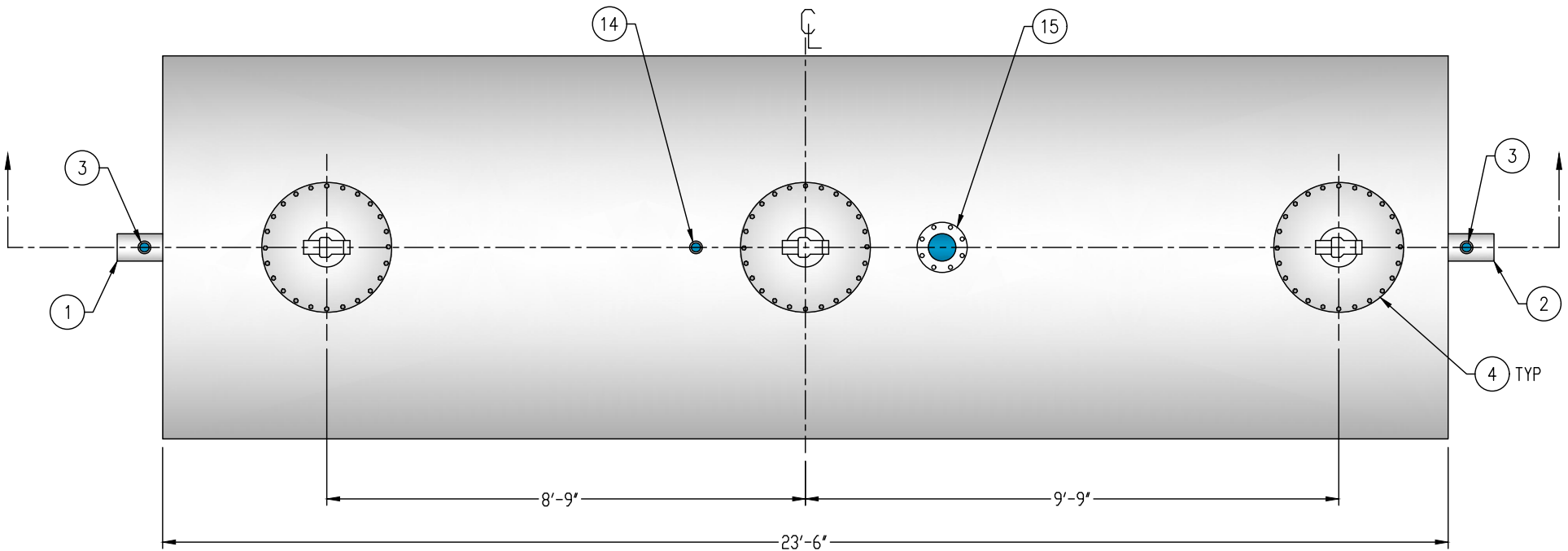


CUSTOMER APPROVAL

THE CUSTOMER HAS REVIEWED THIS DRAWING AND VERIFIED THE ACCURACY OF ALL INFORMATION AND DIMENSIONS.

SIGNED: _____

DATE: _____



SECTION VIEW

GENERAL SPECIFICATIONS

QUANTITY: ONE (1)

MODEL: PGI-6000-3 AC

OPERATING CAPACITY: 6,024 GALLONS

TYPE: SINGLE WALL, ABOVEGROUND

MATERIAL: 1/4" CARBON STEEL SHELL, 5/16" HEADS

LAP FIT AND WELD INTERIOR AND EXTERIOR SEAMS

TANK TEST: 3-5 PSI AIR TEST

SURFACE PREP: SSPC-SP 10 BLAST INTERIOR SURFACES
SSPC-SP 6 BLAST EXTERIOR SURFACES

EXT. COATING: WHITE URETHANE - 3-5 MILS

INT. COATING: CHEMTHANE 4200 PW (15 MILS DFT)

OPERATING PRESSURE: ATMOSPHERIC

- PROVIDED EQUIPMENT
- 1. 6"Ø SCH 40 PIPE STUB - INLET
 - 2. 6"Ø SCH 40 PIPE STUB - OUTLET
 - 3. 2" HC - VENT
 - 4. 24"Ø MANWAY WITH 8" EASY-ACCESS HATCH
 - 5. 8" SQUARE STEEL OUTLET BAFFLE WITH OPEN TOP
 - 6. STRIKER PLATE
 - 7. SLUDGE BAFFLE - 1/4"
 - 8. UNDERFLOW BAFFLE - 1/4"
 - 9. 6"Ø 45° DIFFUSION ELBOW
 - 10. DIFFUSION PLATE - 7 GA
 - 11. 20" x 20" WEAR PLATE - 1/4"
 - 12. GREASE DAM - 1/4"
 - 13. 2" HOLE IN GREASE DAM FOR AIR CIRCULATION
 - 14. 2" HC - NORMAL TANK VENT
 - 15. 8"Ø-150# FFSSO FLANGE - EMERGENCY VENT
 - 16. 6" HIGH STEEL SADDLE - SEAL-WELD TO TANK

NOTE:
ALL RIGHTS RESERVED. THIS DRAWING, OR ANY PART THEREOF, MUST NOT BE REPRODUCED IN ANY FORM WITHOUT WRITTEN PERMISSION FROM HIGHLAND TANK. UNLESS OTHERWISE NOTED, HIGHLAND TANK SHALL BE RESPONSIBLE ONLY FOR ITEMS INDICATED ON THIS FABRICATION DRAWING. THE CUSTOMER IS RESPONSIBLE FOR VERIFYING THE CORRECTNESS OF THE TYPE, SIZE, AND LOCATION OF ALL FITTINGS, ACCESSORIES, AND COATINGS SHOWN ON THIS DRAWING.



PASSIVE GREASE INTERCEPTOR
6,000 GALLON TRIPLE-BASIN

CUSTOMER: _____

PROJECT: _____

QUOTE NO.: _____

ORDER: _____