

NOTE :
ALL RIGHTS RESERVED. THIS DRAWING OR ANY PART THEREOF MUST NOT BE REPRODUCED IN ANY FORM WITHOUT THE WRITTEN PERMISSION OF HIGHLAND TANK.
HIGHLAND TANK SHALL BE RESPONSIBLE ONLY FOR ITEMS INDICATED ON THIS FABRICATION DRAWING UNLESS OTHERWISE NOTED. CUSTOMER IS RESPONSIBLE FOR VERIFYING CORRECTNESS OF SIZE / LOCATION OF FITTINGS , ACCESSORIES & COATINGS SHOWN ON THIS DRAWING

FITTING SCHEDULE

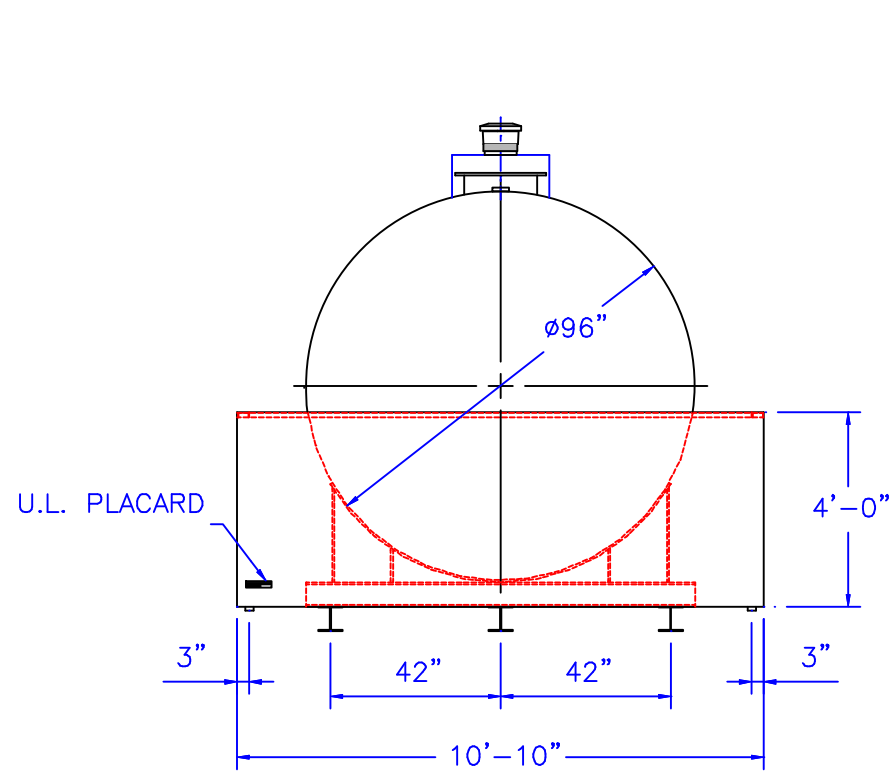
A= 4" Ø NPT
B= 18" Ø TIGHTBOLT MANHOLE
C= 8" Ø NPT (OVERFLOW)
D= 8" Ø NPT (EMERGENCY VENT)
E= 24" x 24" OP CHAMBER

GENERAL NOTES (DIKE)

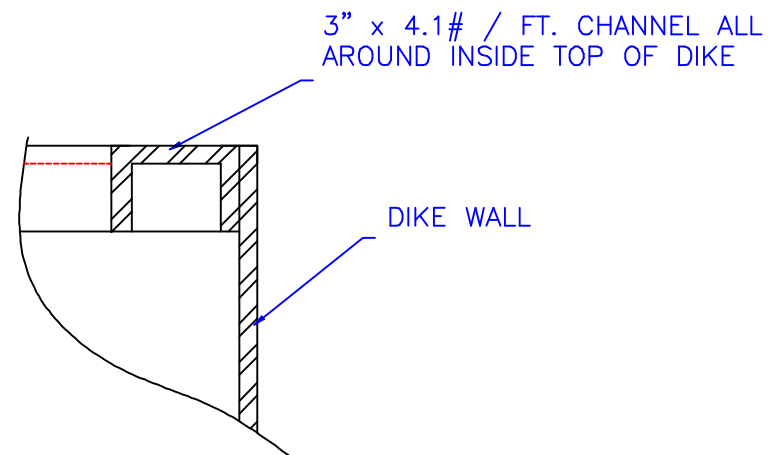
CAPACITY : 7200 GALLONS
TYPE : 110 % CONTAINMENT DIKE
NO. REQ. :
MATERIAL : MILD CARBON STEEL
MIN. GAUGE OR THICKNESS (PER U.L. 142):
1/4" THROUGHOUT
PAINT :
RED PRIMER INTERIOR & EXTERIOR
CONSTRUCTION : BUTT CONSTRUCTION
CORNER TO CORNER
APPROVED LABELS : U.L. 142

GENERAL NOTES (TANK)

CAPACITY : 6000 GALLONS
TYPE : SINGLE WALL, ABOVEGROUND HORIZONTAL, OP
NO. REQ. :
MATERIAL : MILD CARBON STEEL
TEST : 5 P.S.I.
MIN. GAUGE OR THICKNESS (PER U.L. 142):
HEADS : 5/16"
SHELL : 1/4"
PAINT :
INTERIOR : NONE
EXTERIOR : RED PRIMER
CONSTRUCTION : FLAT FLANGED HEADS, LAP WELD ALL
EXTERIOR SEAMS ONLY

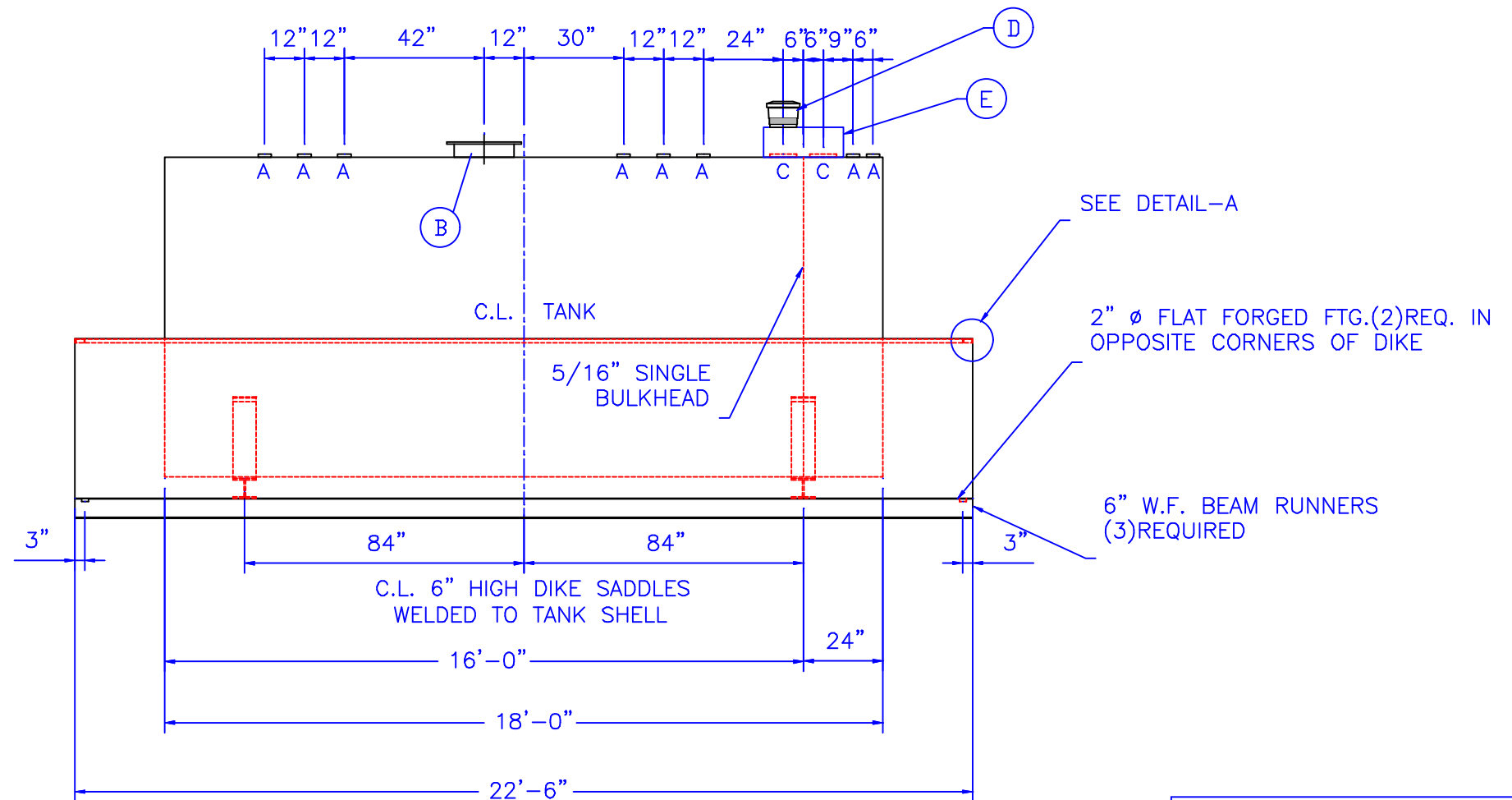


END VIEW



DETAIL-A

TOP OF DIKE CHANNEL BRACING



ELEVATION

<div style="text-align: center;">  <h1 style="margin: 0;">Highland Tank</h1> </div>			
6000 GALLON ABOVEGROUND HORIZONTAL SINGLE WALL, OP, DIKE TANK			
CUSTOMER:			
PROJECT:			
QUOTE NO:		CHK'D BY:	
SCALE: 1/4"=1'-0"	DATE:	DWG. BY:	DWG. NO.: 6KOPSWDK