

GENERAL SPECIFICATIONS

NO. REQ'D: (1)

CAPACITY: 7000 GALLONS

TYPE: RECTANGULAR, HTC, ABOVEGROUND, S--SERIES

MATERIAL: MILD CARBON STEEL

FLOW RATE: 700 GPM

GAUGE: 1/4" THROUGHOUT

SURFACE PREP:

SSPC NO.10 BLAST ALL INTERIOR SURFACES

SSPC NO.6 BLAST ALL EXTERIOR SURFACES

COATING:

MATERIAL

THICKNESS

EXTERIOR--

CHEMPRIME 3001

(3-6 MILS)

CHEMLINE 3300

(2-3 MILS)

TOP COAT "WHITE"

INTERIOR--

CHEMLINE 4200 PW

(15 MILS)

CONSTRUCTION:

BUTT FIT AND WELD ALL CORNERS IN & OUT

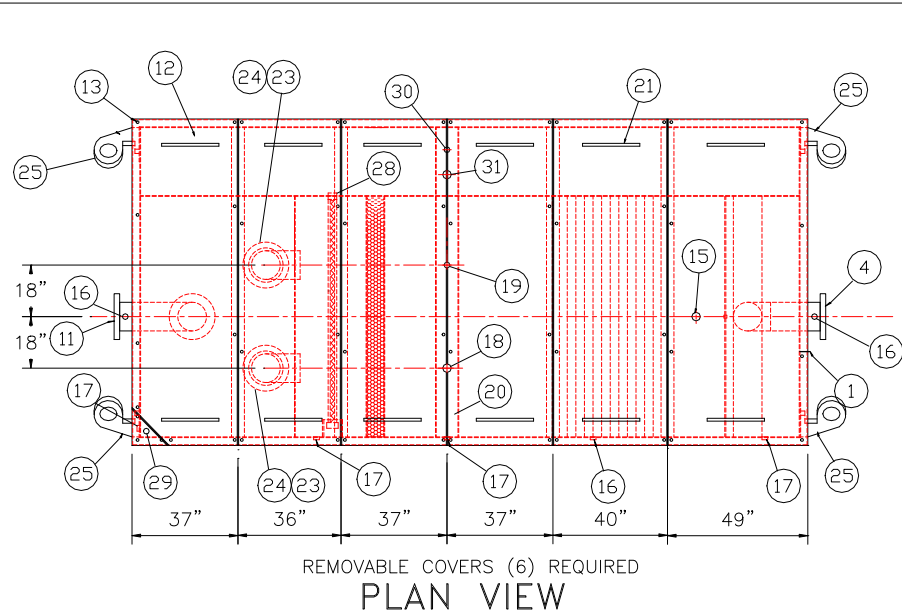
NOTES

1. ALL INTERNAL MATERIAL IS 10 GA

2. ALL THREADED DRAIN FITTINGS TO HAVE STEEL THREADED PLUGS AND COATED WITH TANK

3. ALL OTHER THREADED FITTINGS TO HAVE PVC THREADED PLUGS

4. LIFTING LUGS HAVE REINFORCING PLATES



- PROVIDED EQUIPMENT
1. 3"X3"X1/4" FLAT W/ 9/16"Ø HOLE DRILLED IN CENTER (GROUNDING LUG)

2. SEDIMENT CHAMBER

3. OIL WATER SEPARATOR CHAMBER

4. 150# RF50 FLANGED INLET

5. STEEL INLET ELBOW PIPING

6. VELOCITY HEAD DIFFUSION BAFFLE 10GA

7. WEAR PLATE (1/4" MATERIAL)

8. REMOVABLE PARALLEL CORRUGATED PLATE COALESCER (CORELLA PVC PLATES) 1" PLATE SPACING

9. SLUDGE BAFFLE - 10GA

10. FLANGED PVC OUTLET DOWNCOMER PIPE

11. 150# RF50 FLANGED OUTLET W/ INTERNAL STEEL ELBOW AND FLANGE

12. (6) PIECE COVER W/ 5/8" BOLT HOLES - 7 GA

13. NUTS & BOLTS W/ LARGE WING (CORROSION RESISTANT)

14. GASKET MATERIAL (FOR EACH REMOVABLE COVER)

15. 3"Ø FNPT (CLEAN-OUT)

16. 2"Ø FNPT (VENT)

17. 2"Ø FNPT (DRAIN)

18. 3"Ø FNPT FULL COUPLING WITH 3" INTERNAL PVC PIPE (OIL PUMP OUT IN SEPERATOR CHAMBER)

19. 2"Ø FNPT (SEPARATOR CHAMBER INTERFACE LEVEL SENSOR)

20. 7GA. CROSSMEMBER FOR OIL PUMP-OUT & LEVEL SENSOR FITTINGS IN SEPARATOR AND OIL HOLDING CHAMBERS

21. HANDLES PER H.T. STANDARD

22. 6" THICK REMOVABLE PETROSCREEN CARTRIDGE COALESCER

23. 10"Ø STEEL ELBOW W/ FLANGE WELDED TO TOP FOR PVC RISER PIPES

24. 10"Ø ADJUSTABLE FERNCO COUPLING

25. 3/4" THICK LIFTING LUG ANGLED TOWARD CENTER

26. 1"Ø FNPT COUPLING W/ PLUG

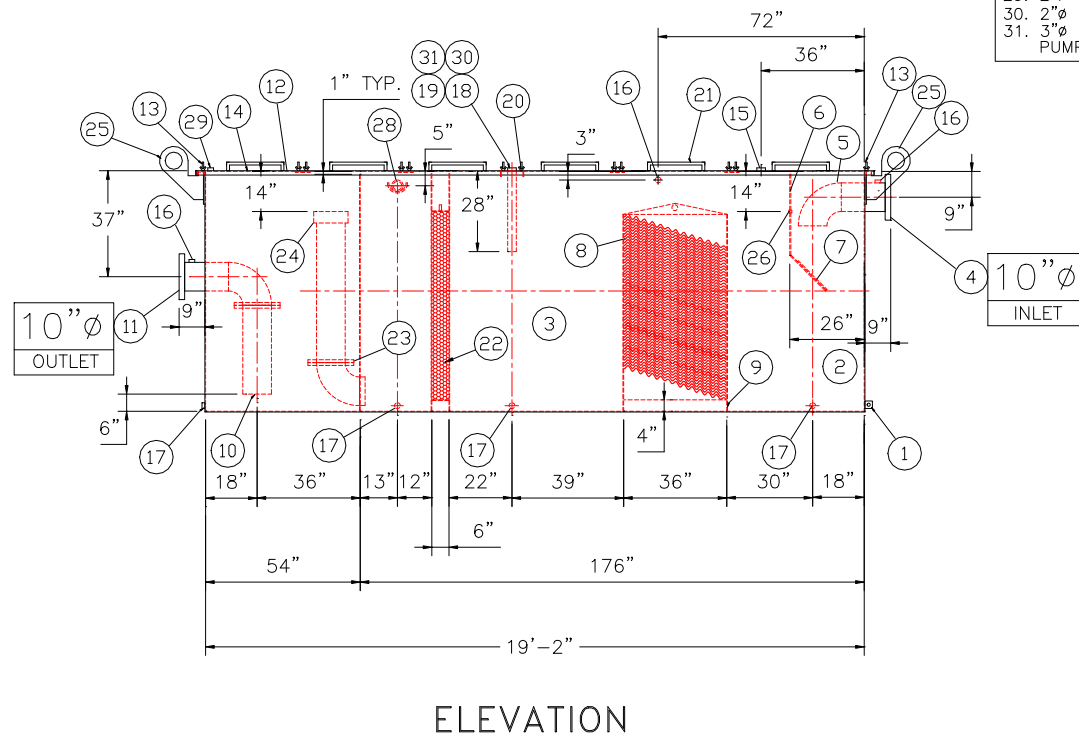
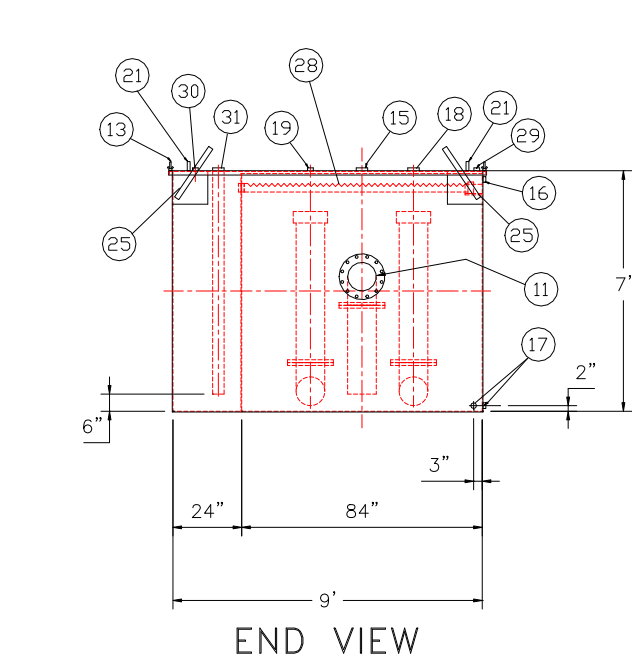
27. OIL HOLDING COMPARTMENT

28. 3" FNPT COUPLING WITH SAWTOOTH TYPE PVC OIL SKIMMER & PIPE SUPPORT SHELF

29. 2"Ø FNPT HALF COUPLING (SPARE)

30. 2"Ø FNPT (HIGH LEVEL OIL HOLDING CHAMBER LEVEL SENSOR)

31. 3"Ø FNPT FULL COUPLING WITH 3" INTERNAL PVC PIPE (OIL PUMP OUT IN OIL HOLDING CHAMBER)



NOTE :
ALL RIGHTS RESERVED. THIS DRAWING OR ANY PART THEREOF MUST NOT BE REPRODUCED IN ANY FORM WITHOUT THE WRITTEN PERMISSION OF HIGHLAND TANK.
HIGHLAND TANK SHALL BE RESPONSIBLE ONLY FOR ITEMS INDICATED ON THIS FABRICATION DRAWING UNLESS OTHERWISE NOTED. CUSTOMER IS RESPONSIBLE FOR VERIFYING CORRECTNESS OF SIZE / LOCATION OF FITTINGS , ACCESSORIES & COATINGS SHOWN ON THIS DRAWING

REVISIONS

HIGHLAND TANK

REG. U.S. PAT. & TM. OFF.

U.S. Patent #4,722,800

Canadian Patent # 1,296,263

7000 GALLON OIL WATER SEPARATOR
RECTANGULAR, HTC, S--SERIES

CUSTOMER:

PROJECT:

QUOTE NO:

CHK'D BY:

SCALE: 1/4"=1'-0"

DATE:

DWG. BY:

DWG. NO.: 07000RECSWHTCS

NO. REQ'D: (1)
CAPACITY: 7000 GALLONS
TYPE: RECTANGULAR, HTC, ABOVEGROUND, S-SERIES
MATERIAL: MILD CARBON STEEL
FLOW RATE: 700 GPM
GAUGE: 1/4" THROUGHOUT
SURFACE PREP:
SSPC NO.10 BLAST ALL INTERIOR SURFACES
SSPC NO.6 BLAST ALL EXTERIOR SURFACES

CONSTRUCTION:
BUTT FIT AND WELD ALL CORNERS IN & OUT

1. ALL INTERNAL MATERIAL IS 10 GA
2. ALL THREADED DRAIN FITTINGS TO HAVE STEEL THREADED PLUGS AND COATED WITH TANK
3. ALL OTHER THREADED FITTINGS TO HAVE PVC THREADED PLUGS
4. LIFTING LUGS HAVE REINFORCING PLATES



Technical drawing of a rectangular structure, likely a container or enclosure, showing dimensions and callouts. The drawing includes a top view and a side view.

Dimensions:

- Overall width: 9'
- Overall height: 7'
- Top flange thickness: 2"
- Bottom flange thickness: 2"
- Internal width (between vertical dashed lines): 84"
- Internal height (between horizontal dashed lines): 24"
- Distance from left edge to first vertical dashed line: 24"
- Distance from right edge to first vertical dashed line: 3"

Callouts (Numbered Circles):

- 11: Central circular feature (possibly a port or sensor).
- 13, 15, 16, 17, 18, 19, 21, 25, 28, 29, 30, 31: Various components, likely fasteners or structural elements, located along the top and bottom edges.

Technical drawing of a rectangular structure, likely a mechanical component or a building footprint, showing dimensions and numbered callouts (1-31). The drawing includes a 10" diameter outlet on the left and a 10" diameter inlet on the right. The overall dimensions are 19'-2" (230") wide and 176" high. The drawing is divided into several sections by dashed lines, indicating different functional areas or components. Key dimensions include 18" for the left section, 36" for the middle section, and 18" for the right section. The drawing also shows a 10" diameter outlet on the left and a 10" diameter inlet on the right. The drawing is divided into several sections by dashed lines, indicating different functional areas or components. Key dimensions include 18" for the left section, 36" for the middle section, and 18" for the right section. The drawing also shows a 10" diameter outlet on the left and a 10" diameter inlet on the right.

1. 3"x3"x1/4" FLAT W/ 9/16"Ø HOLE DRILLED IN CENTER (GROUNDING LUG)
2. SEDIMENT CHAMBER
3. OIL WATER SEPARATOR CHAMBER
4. 150# RFSSO FLANGED INLET
5. STEEL INLET ELBOW PIPING
6. VELOCITY HEAD DIFFUSION BAFFLE 10GA
7. WEAR PLATE (1/4" MATERIAL)
8. REMOVABLE PARALLEL CORRUGATED PLATE COALESCER (CORELLA PVC PLATES) 1" PLATE SPACING
9. SLUDGE BAFFLE - 10GA
10. FLANGED PVC OUTLET DOWNCOMER PIPE
11. 150# RFSSO FLANGED OUTLET W/ INTERNAL STEEL ELBOW AND FLANGE
12. (6) PIECE COVER W/ 5/8" BOLT HOLES - 7 GA
13. NUTS & BOLTS W/ LARGE WING (CORROSION RESISTANT)
14. GASKET MATERIAL (FOR EACH REMOVABLE COVER)
15. 3"Ø FNPT (CLEAN-OUT)
16. 2"Ø FNPT (VENT)
17. 2"Ø FNPT (DRAIN)
18. 3"Ø FNPT FULL COUPLING WITH 3" INTERNAL PVC PIPE (OIL PUMP OUT IN SEPARATOR CHAMBER)
19. 2"Ø FNPT (SEPARATOR CHAMBER INTERFACE LEVEL SENSOR)
20. 7GA. CROSSMEMBER FOR OIL PUMP-OUT & LEVEL SENSOR FITTINGS IN SEPARATOR AND OIL HOLDING CHAMBERS
21. HANDLES PER H.T. STANDARD
22. 6" THICK REMOVABLE PETROSCREEN CARTRIDGE COALESCER
23. 10"Ø STEEL ELBOW W/ FLANGE WELDED TO TOP FOR PVC RISER PIPES
24. 10"Ø ADJUSTABLE FERNCO COUPLING
25. 3/4" THICK LIFTING LUG ANGLED TOWARD CENTER
26. 1"Ø FNPT COUPLING W/ PLUG
27. OIL HOLDING COMPARTMENT
28. 3" FNPT COUPLING WITH SAWTOOTH TYPE PVC OIL SKIMMER & PIPE SUPPORT SHELF
29. 2"Ø FNPT HALF COUPLING (SPARE)
30. 2"Ø FNPT (HIGH LEVEL OIL HOLDING CHAMBER LEVEL SENSOR)
31. 3"Ø FNPT FULL COUPLING WITH 3" INTERNAL PVC PIPE (OIL PUMP OUT IN OIL HOLDING CHAMBER)

Highland Tank

7000 GALLON OIL WATER SEPARATOR
RECTANGULAR, HTC, S-SERIES

QUOTE NO:

SCALE:
1/4"=1'-0"

DWG. NO.:

DWG. NO.:
07000RECSWHTCS

NOTE :
ALL RIGHTS RESERVED. THIS DRAWING OR ANY PART THEREOF MUST
NOT BE REPRODUCED IN ANY FORM WITHOUT THE WRITTEN PERMISSION
OF HIGHLAND TANK
HIGHLAND TANK SHALL BE RESPONSIBLE ONLY FOR ITEMS INDICATED
ON THIS FABRICATION DRAWING UNLESS OTHERWISE NOTED. CUSTOMER
IS RESPONSIBLE FOR VERIFYING CORRECTNESS OF SIZE / LOCATION
OF FITTINGS , ACCESSORIES & COATINGS SHOWN ON THIS DRAWING