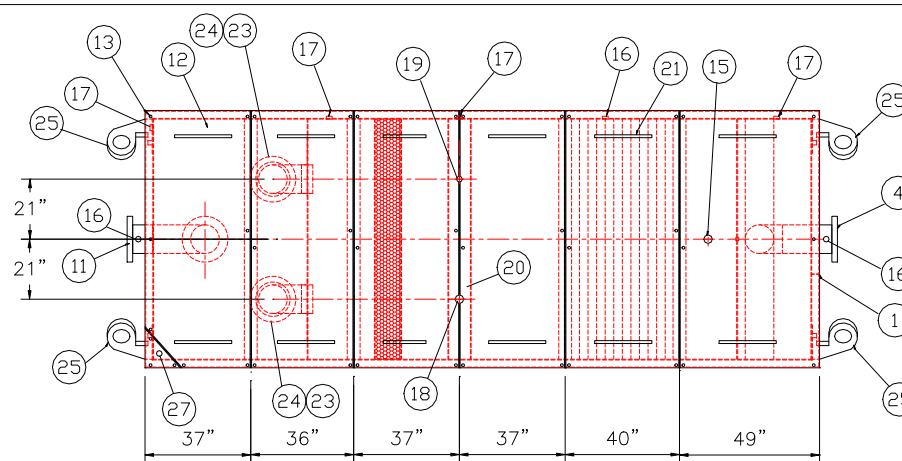


GENERAL SPECIFICATIONS

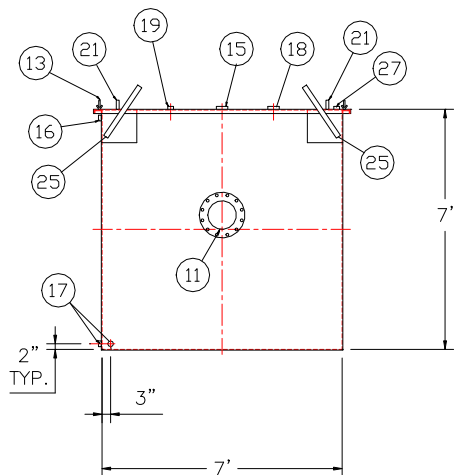
NO. REQ'D: (1)
CAPACITY: 7000 GALLONS
TYPE: RECTANGULAR, HTC, ABOVEGROUND, SINGLE WALL
MATERIAL: MILD CARBON STEEL
FLOW RATE: 700 GPM
GAUGE:
SHELL- 1/4"
HEADS- 1/4"
SURFACE PREP:
SSPC NO.10 BLAST ALL INTERIOR SURFACES
SSPC NO.6 BLAST ALL EXTERIOR SURFACES
COATING: MATERIAL THICKNESS
EXTERIOR- CHEMPRIME 3001 (3-6 MILS)
CHEMLINE 3300 (2-3 MILS)
TOP COAT "WHITE"
INTERIOR- CHEMLINE 4200 PW (15 MILS)
CONSTRUCTION:
BUTT FIT & WELD ALL CORNERS IN & OUT

NOTES

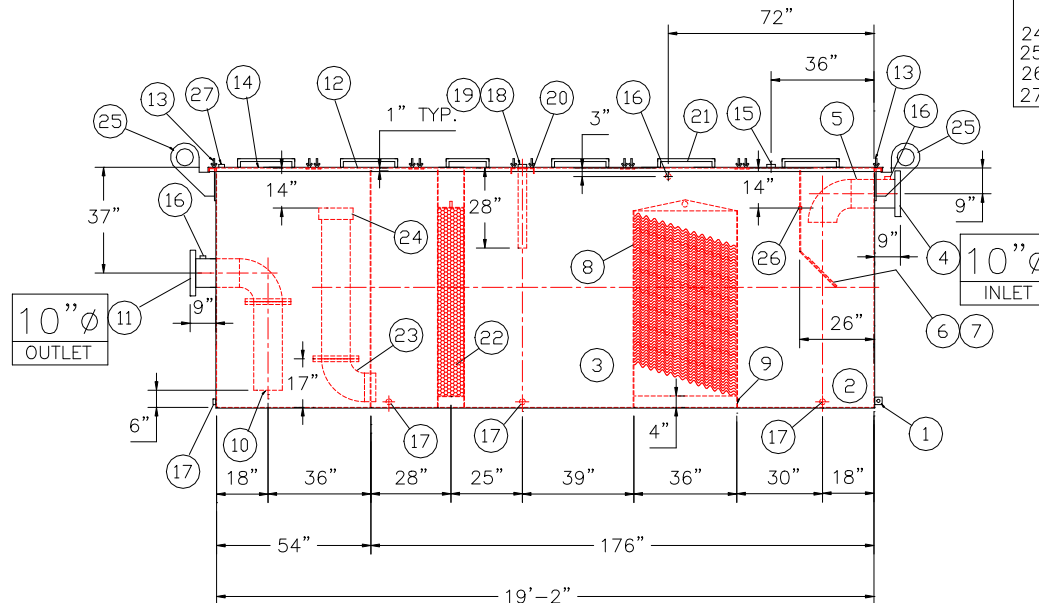
- ALL INTERNAL MATERIAL IS 10 GA
- ALL THREADED DRAIN FITTINGS TO HAVE STEEL THREADED PLUGS AND COATED WITH TANK
- ALL OTHER THREADED FITTINGS TO HAVE PVC THREADED PLUGS
- LIFTING LUGS HAVE REINFORCING PLATES



PLAN VIEW



END VIEW



ELEVATION

REQUIRED EQUIPMENT

- 3"x3"x1/4" FLAT W/ 9/16"Ø HOLE DRILLED IN CENTER (GROUNDING LUG)
- SEDIMENT CHAMBER
- OIL WATER SEPARATOR CHAMBER
- 150# RFSO FLANGED INLET
- STEEL INLET ELBOW PIPING
- VELOCITY HEAD DIFFUSION BAFFLE - 10GA
- WEAR PLATE - 1/4"
- REMOVABLE PARALLEL CORRUGATED PLATE COALESCER. CORELLA PVC PLATES (1" PLATE SPACING)
- SLUDGE BAFFLE - 10GA
- FLANGED PVC OUTLET DOWNCOMER PIPE
- 150# RFSO FLANGED OUTLET W/ INTERNAL STEEL ELBOW AND FLANGE
- (6) PIECE COVER W/ 5/8" BOLT HOLES - 7 GA
- NUTS & BOLTS W/ LARGE WING NUTS-TYP. (CORROSION RESISTANT)
- GASKET MATERIAL (FOR EACH REMOVABLE COVER)
- 3"Ø FNPT (CLEAN-OUT)
- 2"Ø FNPT (VENT)
- 2"Ø FNPT HALF COUPLING (DRAIN) W/ STEEL PLUG
- 3"Ø FNPT FULL COUPLING W/ 3" Ø INTERNAL PVC PIPE (OIL PUMPOUT)
- 2"Ø FNPT HALF COUPLING (INTERFACE LEVEL SENSOR)
- 7GA. CROSSMEMBER 9" WIDE FOR OIL PUMP-OUT AND LEVEL SENSOR FTGS.
- HANDLES PER H.T. STANDARD
- 6" THICK REMOVABLE PETROSCREEN CARTRIDGE COALESCER
- 10"Ø STEEL ELBOW W/ FLANGE WELDED TO TOP FOR PVC RISER PIPES
- 10"Ø ADJUSTABLE FERNCO COUPLING
- 3/4" THICK LIFTING LUG ANGLED TOWARD CENTER
- 1"Ø COUPLING W/ PLUG
- 2"Ø FNPT HALF COUPLING (SPARE)

REVISIONS



Highland Tank

U.S. Patent #4,722,800 Canadian Patent # 1,296,263

7000 GALLON OIL WATER SEPARATOR
RECTANGULAR, HTC, SINGLE WALL

CUSTOMER:

PROJECT:

QUOTE NO:

CHK'D BY:

SCALE:
1/4"=1'-0"

DATE:

DWG. BY:

DWG. NO.:

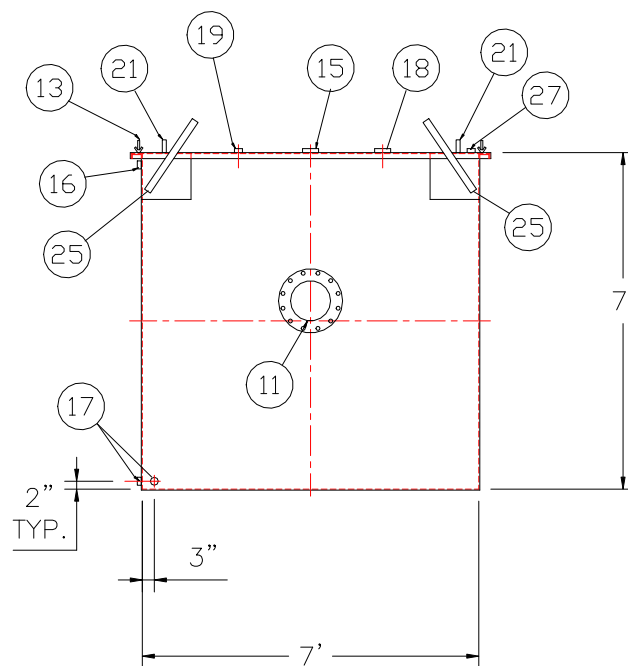
07000RECSWHTC

UNLESS OTHERWISE SPECIFIED DIMENSIONS ARE IN INCHES
TOLERANCES ARE + OR - 1"

NOTE :
ALL RIGHTS RESERVED. THIS DRAWING OR ANY PART THEREOF MUST NOT BE REPRODUCED IN ANY FORM WITHOUT THE WRITTEN PERMISSION OF HIGHLAND TANK.
HIGHLAND TANK SHALL BE RESPONSIBLE ONLY FOR ITEMS INDICATED ON THIS FABRICATION DRAWING UNLESS OTHERWISE NOTED. CUSTOMER IS RESPONSIBLE FOR VERIFYING CORRECTNESS OF SIZE / LOCATION OF FITTINGS , ACCESSORIES & COATINGS SHOWN ON THIS DRAWING

NO. REQ'D: (1)
CAPACITY: 7000 GALLONS
TYPE: RECTANGULAR, HTC, ABOVEGROUND, SINGLE WALL
MATERIAL: MILD CARBON STEEL
FLOW RATE: 700 GPM
GAUGE:
SHELL- 1/4"
HEADS- 1/4"
SURFACE PREP:
SSPC NO.10 BLAST ALL INTERIOR SURFACES
SSPC NO.6 BLAST ALL EXTERIOR SURFACES
COATING: MATERIAL THICKNESS
EXTERIOR- CHEMPRIME 3001 (3-6 MILS)
CHEMLINE 3300 (2-3 MILS)
TOP COAT "WHITE"
INTERIOR- CHEMLINE 4200 PW (15 MILS)
CONSTRUCTION:
BUTT FIT & WELD ALL CORNERS IN & OUT

1. ALL INTERNAL MATERIAL IS 10 GA
2. ALL THREADED DRAIN FITTINGS TO HAVE STEEL THREADED PLUGS AND COATED WITH TANK
3. ALL OTHER THREADED FITTINGS TO HAVE PVC THREADED PLUGS
4. LIFTING LUGS HAVE REINFORCING PLATES

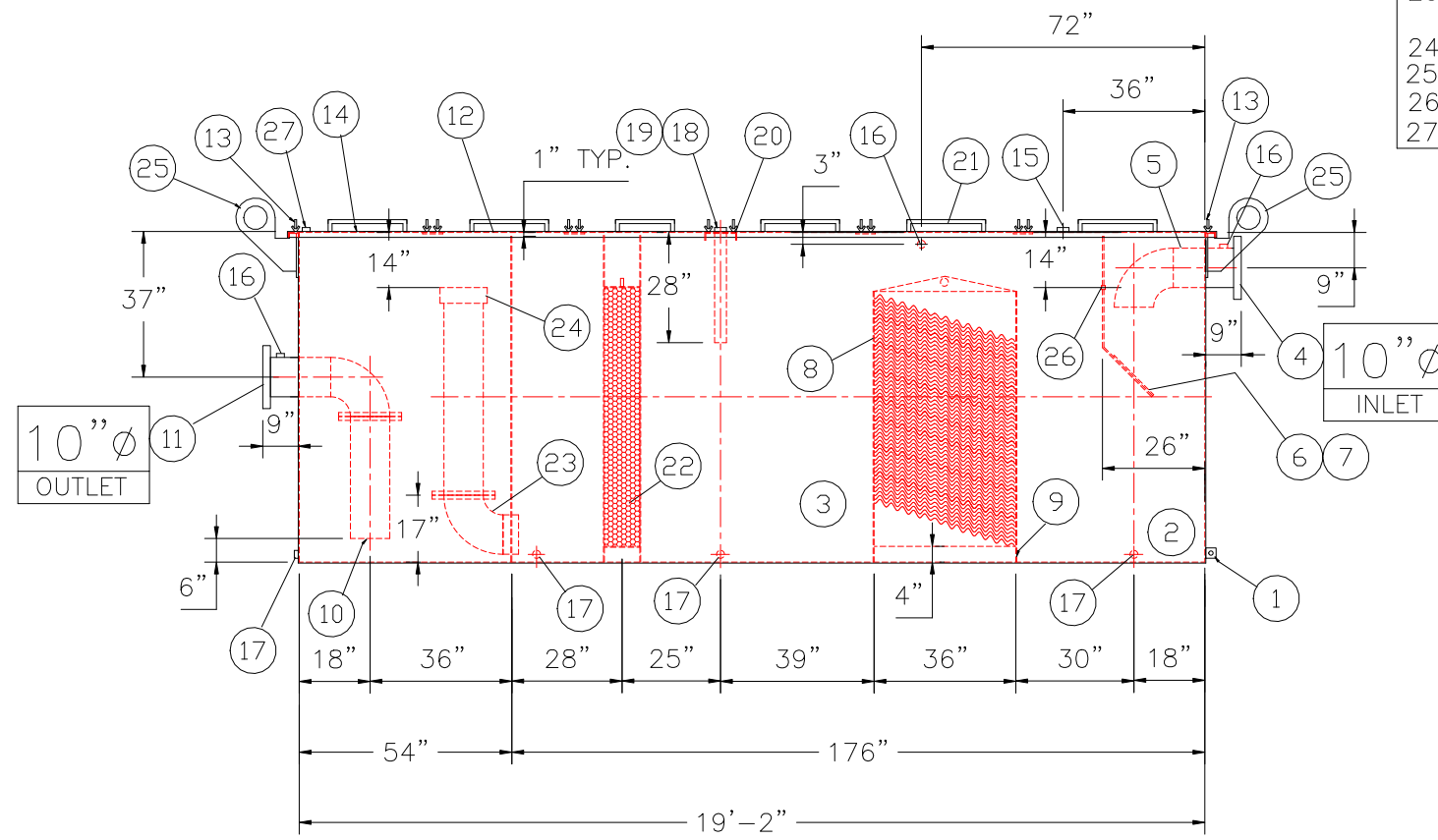


Technical drawing of a mechanical assembly, likely a pump or motor housing, showing a cross-section. The drawing includes numerous numbered callouts (1 through 27) identifying various components and features. Dimensions are provided for the overall size and internal features:

- Overall width: 37" + 36" + 37" + 37" + 40" + 49" = 236"
- Overall height: 21" + 21" = 42"
- Internal vertical dimensions: 37", 36", 37", 37", 40", 49"
- Internal horizontal dimensions: 21", 21"


The drawing shows a complex internal structure with various ports, valves, and structural elements. A central vertical section is highlighted with a red hatched pattern. The assembly is shown in a perspective view, with a dashed red line indicating a cross-section or internal structure.

PLAN VIEW



PROVIDED EQUIPMENT

1. 3"x3"x1/4" FLAT W/ 9/16"Ø HOLE DRILLED IN CENTER (GROUNDING LUG)
2. SEDIMENT CHAMBER
3. OIL WATER SEPARATOR CHAMBER
4. 150# RFSO FLANGED INLET
5. STEEL INLET ELBOW PIPING
6. VELOCITY HEAD DIFFUSION BAFFLE – 10GA
7. WEAR PLATE – 1/4"
8. REMOVABLE PARALLEL CORRUGATED PLATE COALESCER. CORELLA PVC PLATES (1" PLATE SPACING)
9. SLUDGE BAFFLE – 10GA
10. FLANGED PVC OUTLET DOWNCOMER PIPE
11. 150# RFSO FLANGED OUTLET W/ INTERNAL STEEL ELBOW AND FLANGE
12. (6) PIECE COVER W/ 5/8" BOLT HOLES – 7 GA
13. NUTS & BOLTS W/ LARGE WING NUTS–TYP. (CORROSION RESISTANT)
14. GASKET MATERIAL (FOR EACH REMOVABLE COVER)
15. 3"Ø FNPT (CLEAN–OUT)
16. 2"Ø FNPT (VENT)
17. 2"Ø FNPT HALF COUPLING (DRAIN) W/ STEEL PLUG
18. 3"Ø FNPT FULL COUPLING W/ 3" Ø INTERNAL PVC PIPE (OIL PUMPOUT)
19. 2"Ø FNPT HALF COUPLING (INTERFACE LEVEL SENSOR)
20. 7GA. CROSSMEMBER 9" WIDE FOR OIL PUMP–OUT AND LEVEL SENSOR FTGS.
21. HANDLES PER H.T. STANDARD
22. 6" THICK REMOVABLE PETROSCREEN CARTRIDGE COALESCER
23. 10"Ø STEEL ELBOW W/ FLANGE WELDED TO TOP FOR PVC RISER PIPES
24. 10"Ø ADJUSTABLE FERNCO COUPLING
25. 3/4" THICK LIFTING LUG ANGLED TOWARD CENTER
26. 1"Ø COUPLING W/ PLUG
27. 2"Ø FNPT HALF COUPLING (SPARE)

REVISIONS			
		Highland Tank	
U.S. Patent #4,722,800		Canadian Patent # 1,296,263	
7000 GALLON OIL WATER SEPARATOR RECTANGULAR, HTC, SINGLE WALL			
CUSTOMER:			
PROJECT:			
QUOTE NO:		CHK'D BY:	
SCALE: 1/4"=1'-0"	DATE:	DWG. BY:	DWG. NO.: 07000RECSWHTC

NOTE :
ALL RIGHTS RESERVED. THIS DRAWING OR ANY PART THEREOF MUST
NOT BE REPRODUCED IN ANY FORM WITHOUT THE WRITTEN PERMISSION
OF HIGHLAND TANK.
HIGHLAND TANK SHALL BE RESPONSIBLE ONLY FOR ITEMS INDICATED
ON THIS FABRICATION DRAWING UNLESS OTHERWISE NOTED. CUSTOMER
IS RESPONSIBLE FOR VERIFYING CORRECTNESS OF SIZE / LOCATION
OF FITTINGS , ACCESSORIES & COATINGS SHOWN ON THIS DRAWING

UNLESS OTHERWISE SPECIFIED DIMENSIONS ARE IN INCHES
TOLERANCES ARE + OR - 1"

SCALE:
1/4"=1'-0"

DATE:

DWG. BY:

CHK'D BY:

DWG. NO.:

DWG. NO.:
07000RECSWHTC