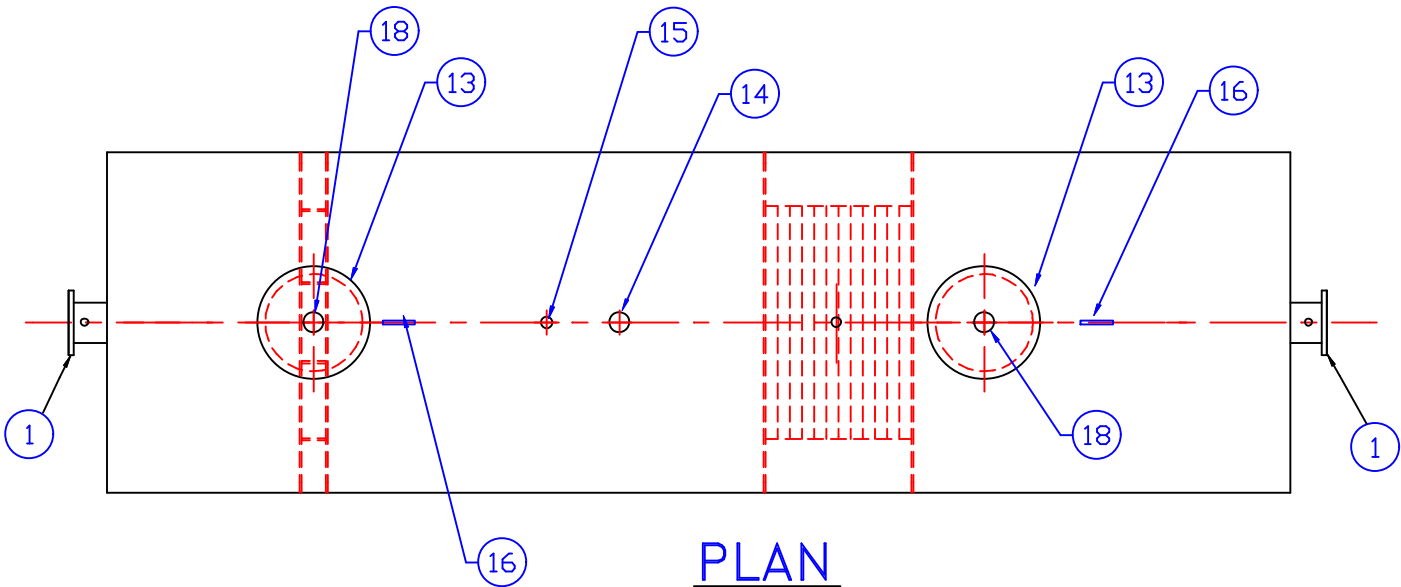


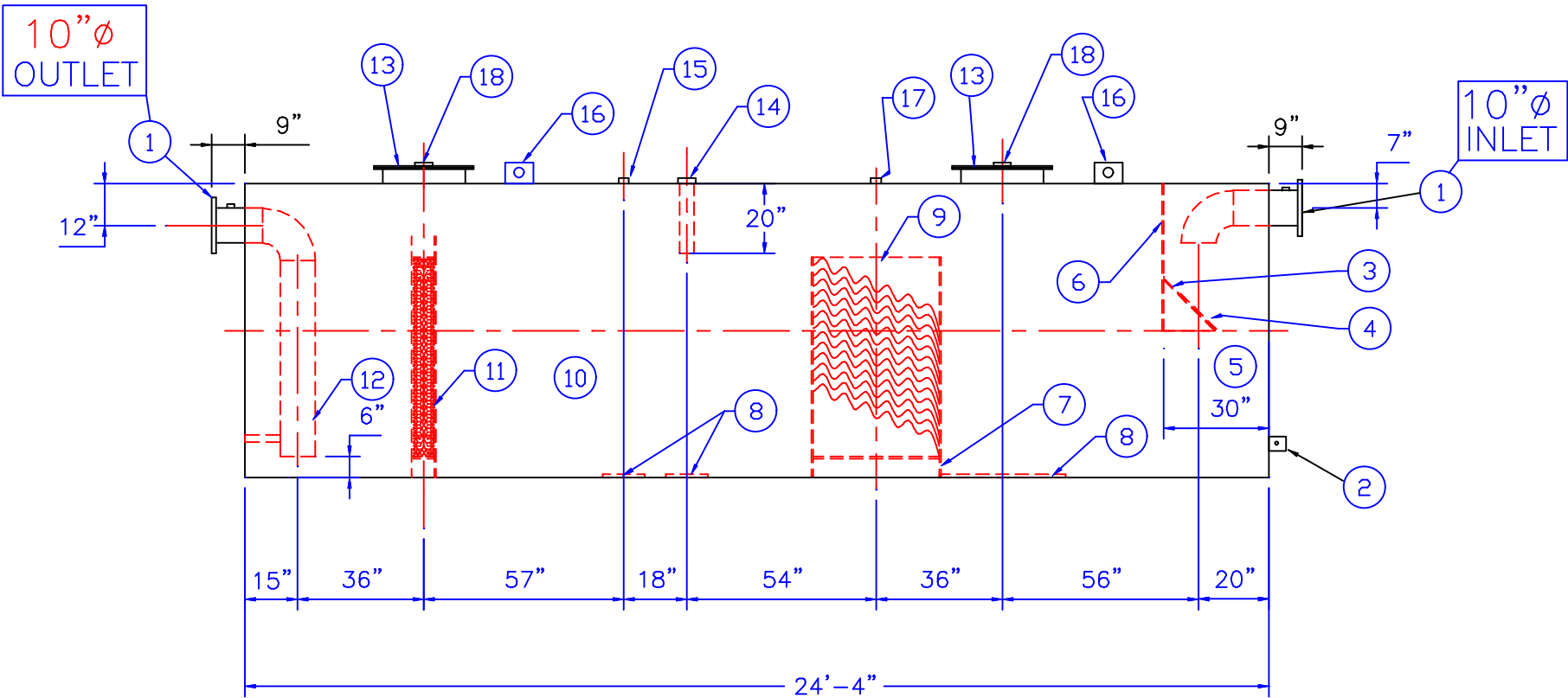
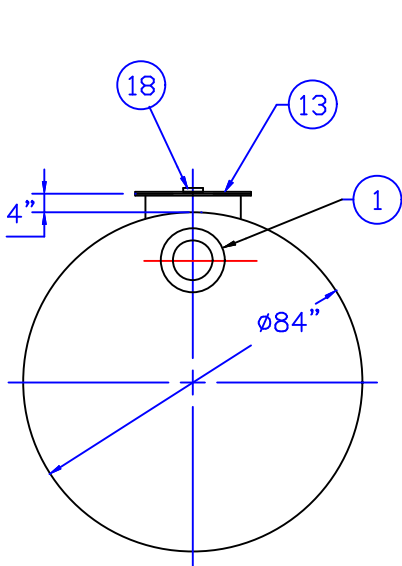
GENERAL SPECIFICATIONS

NO. REQ'D: (1)  
CAPACITY: 7,000 GALLONS  
TYPE: HTC, ABOVEGROUND, SINGLE WALL  
ESTIMATED WEIGHT: 11,247 lbs.  
MATERIAL: MILD CARBON STEEL  
FLOW RATE: 700 GPM  
GAUGE:  
SHELL- .225"  
HEADS- 1/4"  
SURFACE PREP:  
SSPC NO.6 BLAST ALL EXTERIOR SURFACES  
SSPC NO.10 BLAST ALL INTERIOR SURFACES  
COATING: MATERIAL THICKNESS  
EXTERIOR- SP.6 FINISH PAINT (WHITE) (3 MILS)  
INTERIOR- CORROCOTE PW (15 MILS)



PROVIDED EQUIPMENT

1. 150# R.F.S.O. FLANGE W/ 2"Ø NPT FOR VENT
2. 3"x3"x1/4"GROUNDING LUG W/ 1/2"Ø HOLE
3. VELOCITY HEAD DIFFUSION BAFFLE
4. WEAR PLATE
5. SEDIMENT CHAMBER
6. UNDERFLOW BAFFLE
7. SLUDGE BAFFLE
8. STRIKER PLATES
9. PARALLEL CORRUGATED PLATE COALESCER
10. OIL/WATER SEPARATOR CHAMBER
11. 6" THICK COALESCER MATERIAL INSTALLED W/ PULL ROD SHIPPED LOOSE
12. OUTLET DOWNCOMER
13. 24"Ø MANWAY
14. 4"Ø FTG. FOR OIL PUMPOUT W/ INTERNAL PIPE INSTALLED
15. 2"Ø FTG. FOR LEVEL SENSOR
16. LIFTING LUG LOCATED BY H.T. FABRICATION SHOP
17. 2"Ø FTG. FOR VENT
18. 4"Ø FTG. FOR GAUGE WITH PLUG
19. 2"Ø FTG. LEAK DETECTION



NOTE :  
ALL RIGHTS RESERVED. THIS DRAWING OR ANY PART THEREOF MUST NOT BE REPRODUCED IN ANY FORM WITHOUT THE WRITTEN PERMISSION OF HIGHLAND TANK.  
HIGHLAND TANK SHALL BE RESPONSIBLE ONLY FOR ITEMS INDICATED ON THIS FABRICATION DRAWING UNLESS OTHERWISE NOTED. CUSTOMER IS RESPONSIBLE FOR VERIFYING CORRECTNESS OF SIZE / LOCATION OF FITTINGS , ACCESSORIES & COATINGS SHOWN ON THIS DRAWING

REVISIONS			
<div><div><div>HTGLAND TANK MFG. CO.</div><div>Highland Tank</div></div><div>7,000 GALLON OIL WATER SEPARATOR HTC, ABOVEGROUND, SINGLE WALL</div><div>CUSTOMER:</div><div>PROJECT:</div><div>QUOTE NO:</div><div>CHK'D BY:</div><div>SCALE: 1/4"=1'-0"</div><div>DATE: 9-22-00</div><div>DWG. BY: MM</div><div>DWG. NO.: 7K HTCAGSW</div></div>			