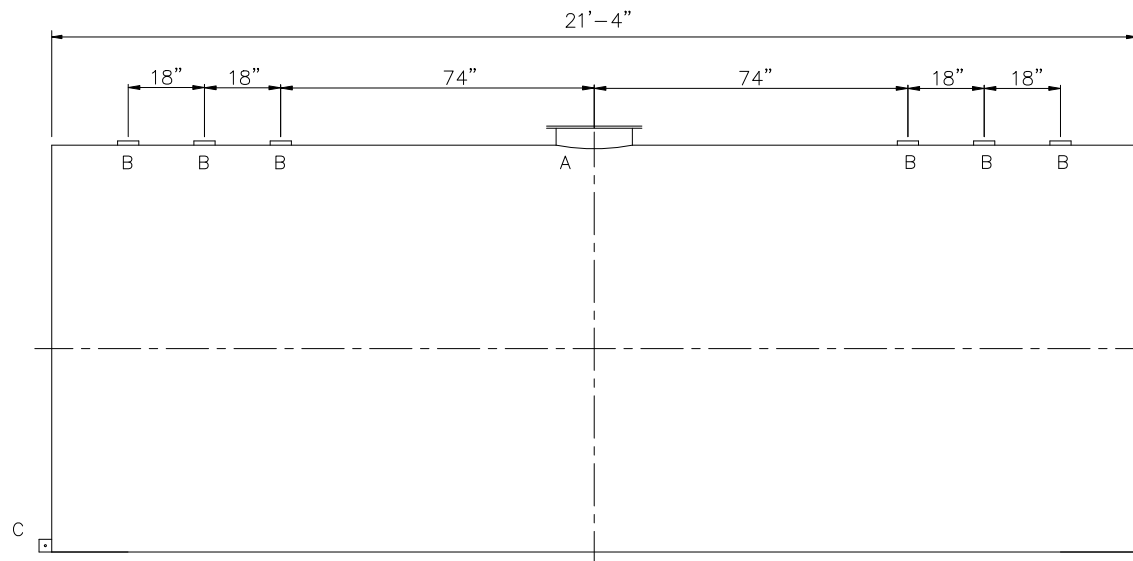



SHIPPING LUGS AS NEEDED

Diagram showing the elevation view of a spherical tank. The tank is represented by a circle with a horizontal centerline and a vertical centerline. A dimension line indicates the diameter is $\phi 8'-0"$. A small rectangular structure is shown on top of the tank, representing a support or platform.



<u>DESIGN DATA</u>
CAPACITY – 8,000 GAL
TYPE – SINGLE WALL
NO. REQ. – –
OPERATING PRESSURE – ATMOSPHERIC
SPECIFIC GRAVITY = 1.0
TANK MATERIAL – MILD CARBON STEEL
THICKNESS – HEADS: 5/16"
THICKNESS – SHELL: 1/4"
CONSTRUCTION – LAP WELD OUTSIDE ONLY –
TANK TEST – 5 PSIG –
INT. FINISH – NONE –
EXT. FINISH – SHOP PRIMER –
LABEL – UL 142

LEGEND	
A	18" LOOSE BOLT MANWAY [PRIMARY EMERGENCY VENT]
B	4" FITTING
C	FB-3"x 1/4"x3" WITH 5/8"Ø HOLE ON CL (GROUNDING LUG)
D	—
E	—
F	—

 <h1 data-bbox="1901 1147 2195 1212">Highland Tank</h1>	
UNLESS NOTED, TOLERANCES ARE +/- .1"	
8,000 GAL 96"Ø SW AG HORIZONTAL	
CUSTOMER:	
PROJECT:	
QUOTE NO:	CHK'D BY:
SCALE: 3/8"=1'-0"	DWG. NO: 08000AHSW96
DATE:	DWG. BY: