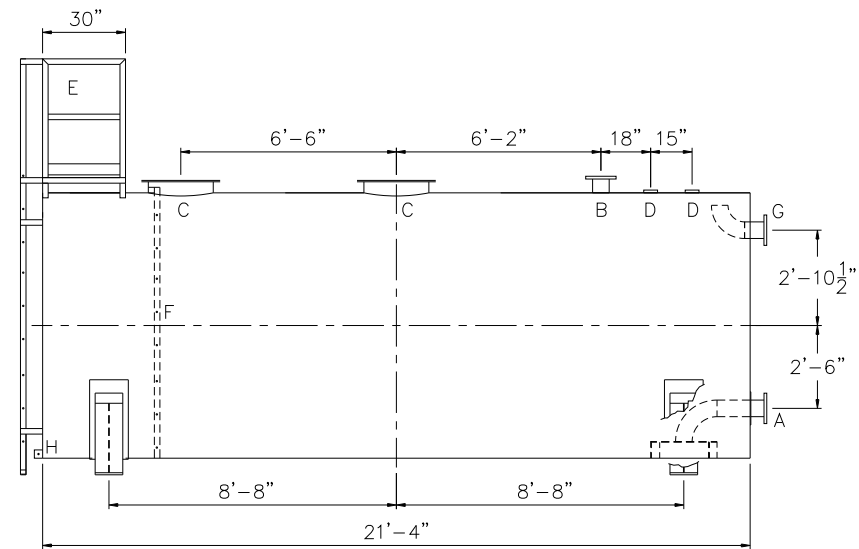
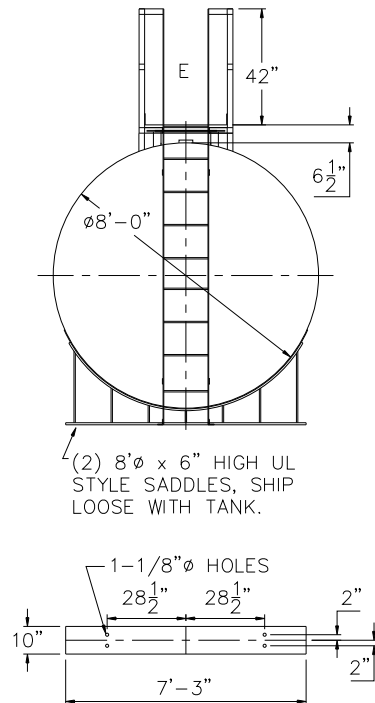


TOUCH UP OF FINISHED PAINT IS
REQUIRED BY INSTALLATION
CONTRACTOR. TOUCH UP PAINT SHIPPED
WITH TANK.

SHIPPING LUGS AS NEEDED



DESIGN DATA	LEGEND	
CAPACITY –8,000 GALLONS	A	FLANGE WITH INTERNAL VORTEX BREAKER PER NFPA 22
TYPE – FIRE PROTECTION TANK (FPT)	B	FLANGE – VENT
NO. REQ. – –	C	24" x 14" PLATE TIGHT BOLT MANWAY WITH 1" THICK NEO-CORK GASKET
OPERATING PRESSURE – ATMOSPHERIC	D	4" FNPT CONNECTION
TANK MATERIAL – MILD CARBON STEEL	E	STD HTM EXTERNAL LADDER & PLATFORM ASSEMBLY – PAINTED SAFETY YELLOW AND SHIPPED LOOSE FOR INSTALLATION ON SITE BY OTHERS
THICKNESS – HEADS: 5/16"	F	HTM STD INTERNAL LADDER
THICKNESS – SHELL: 1/4"	G	FLANGE WITH INTERNAL 90° ELBOW SHOWN – OVERFLOW
CONSTRUCTION – LAP WELD INSIDE AND OUTSIDE	H	FB-3"x 1/4"x3" WITH 5/8"Ø HOLE ON CL (GROUNDING LUG)
TANK TEST –5 PSIG		
INT. FINISH – SSPC SP10 BLAST, HighDRO®-LINER PLUS FOR NFPA 22 APPLICATIONS		
EXT. FINISH –SSPC SP6 BLAST, WHITE URETHANE PAINT		
LABEL – NONE		

					
		<h1>Highland Tank[®]</h1>			
<h2>HighDRO[®] WATER STORAGE TANK</h2>					
<h3>8,000 GAL 96"Ø AH FIRE PROTECTION TANK</h3>					
<p>CUSTOMER:</p>					
<p>PROJECT:</p>					
<p>QUOTE NO:</p>				<p>CHK'D BY:</p>	
<p>SCALE:</p> <p>1/4"=1'-0"</p>	<p>DATE:</p> <p>XX/XX/XX</p>	<p>DWG. BY:</p> <p>XXX</p>	<p>DWG. NO:</p> <p>08000AHSWHDFT96</p>		