

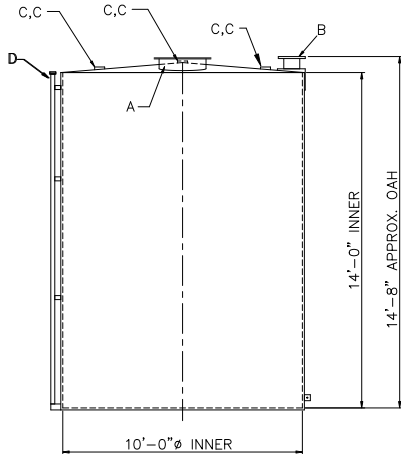
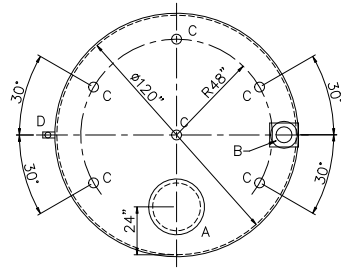
NOTE: ALL RIGHTS RESERVED. THIS DRAWING MUST NOT BE REPRODUCED IN ANY FORM WITHOUT THE WRITTEN PERMISSION OF HIGHLAND TANK. HIGHLAND TANK SHALL BE RESPONSIBLE ONLY FOR ITEMS INDICATED ON THIS FABRICATION DRAWING UNLESS OTHERWISE NOTED. CUSTOMER IS RESPONSIBLE FOR VERIFYING CORRECTNESS OF SIZE AND LOCATION OF FITTINGS, ACCESSORIES, AND COATINGS SHOWN ON THIS DRAWING.

TOUCH UP OF FINISHED PAINT IS REQUIRED BY INSTALLATION CONTRACTOR. TOUCH UP PAINT SHIPPED WITH TANK.

SHIPPING LUGS AS NEEDED

NOTES

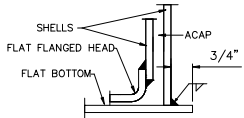
1. SEE PLAN VIEW FOR TRUE ORIENTATION AND LOCATION OF FITTING
2. LIFTING LUGS FOR UNLOADING UNIT & STANDING UNIT UPRIGHT TO BE PLACED AS NEEDED BY FABRICATION SHOP
3. A 3x3x1/4" STEEL GROUNDING LUG WITH A 5/8" HOLE IN CENTER TO BE PLACED ON SHELL AT BOTTOM OF TANK IN LINE WITH LIFTING LUGS



DESIGN DATA	
CAPACITY	8,000 GALLON
TYPE	VERTICAL DOUBLE WALL
NO. REQ.	- -
OPERATING PRESSURE	ATMOSPHERIC
SPECIFIC GRAVITY	= 1.0
TANK MATERIAL	MILD CARBON STEEL
THICKNESS-TOP	7 GA SHALLOW SLOPE SINGLE WALL
THICKNESS-INNER- SHELL:	1/4" BOTTOM: 1/4"
THICKNESS-OUTER- SHELL:	7 GA BOTTOM: 1/4"
CONSTRUCTION	LAP WELD OUTSIDE ONLY- INNER & OUTER
TANK TEST	INNER: 2 PSIG, OUTER:- 2 PSIG & FULL VACUUM
INT. FINISH	NONE
EXT. FINISH	SHOP PRIMER
LABEL	UL 142

LEGEND

A	24" LOOSE BOLT MANWAY
B	8" FFSO 150# FLANGE IN INTERSTICE EXTENSION BOX - MARK WITH WARNING LABEL - SECONDARY EMERGENCY VENT USE ONLY
C	4" FNPT FITTING
D	2" INTERSTITIAL MONITOR PIPE
E	-
F	



BOTTOM JOINT DETAIL

HIGHLAND TANK		Highland Tank	
UNLESS NOTED, TOLERANCES ARE +/- 1"			
8,000 GAL 120" DW VERTICAL			
CUSTOMER:			
PROJECT:			
QUOTE NO:		CHK'D BY:	
SCALE: 1/4"=1'-0"	DATE:	DWG. BY:	DWG. NO: 8000AVDW120