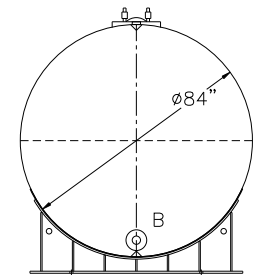
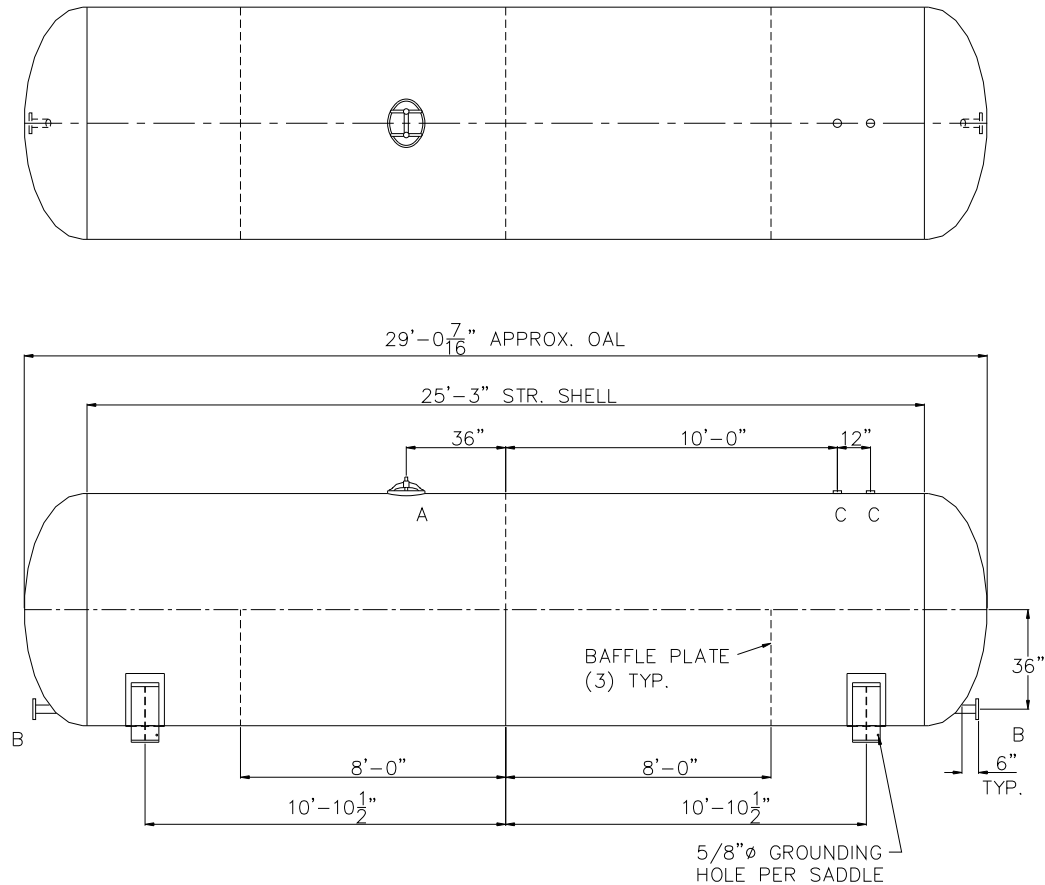


NOTE: ALL RIGHTS RESERVED. THIS DRAWING MUST NOT BE REPRODUCED IN ANY FORM WITHOUT THE WRITTEN PERMISSION OF HIGHLAND TANK. HIGHLAND TANK SHALL BE RESPONSIBLE ONLY FOR ITEMS INDICATED ON THIS FABRICATION DRAWING UNLESS OTHERWISE NOTED. CUSTOMER IS RESPONSIBLE FOR VERIFYING CORRECTNESS OF SIZE AND LOCATION OF FITTINGS, ACCESSORIES, AND COATINGS SHOWN ON THIS DRAWING.

TOUCH UP OF FINISHED PAINT IS REQUIRED BY INSTALLATION CONTRACTOR. TOUCH UP PAINT SHIPPED WITH TANK.



DESIGN DATA	
CAPACITY – 8,000 GALLONS	
TYPE – ABOVEGROUND CHLORINE CONTACT VESSEL	
NO. REQ. – ---	
MAX. ALLOW. WORKING PRES. – ___ PSIG @ 140 °F	
MAX ALLOW. EXTERNAL W.P. – ___ PSIG @ 140 °F	
MIN. DESIGN METAL TEMP – –20°F @ ___ PSIG	
HYDROSTATIC TEST PRESSURE – ___ PSIG	
CORROSION ALLOWANCE – ---	
POSTWELD HEAT TREATED – ---	
RADIOGRAPHY – ---	
HEADS – --- SA516 GR 70 ASME 2:1 ELLIPTICAL	
SHELL – --- SA516 GR 70	
INT. FINISH – SSPC, SP10 BLAST	
HIGH DRO™ LINER PLUS FOR NSF/ANSI 61 POTABLE WATER	
EXT. FINISH – GRAY SHOP PRIMER	
OR	
OTHER TO BE SPECIFIED	
CONSTRUCTION – BUTT WELD INSIDE AND OUTSIDE	
ALL TANK FABRICATIONS TO BE IN ACCORDANCE WITH ASME SECTION VIII, DIVISION 1, LATEST EDITION, LATEST ADDENDA	
ALL SHELL, HEAD, FITTINGS, AND MANWAYS TO BE WELDED TO BIGBEE STEEL WELD PROCEDURE PER DRAWING F11151	
HIGHLAND TANK SERIAL # – --	

LEGEND						
MARK	SIZE	TYPE	RATING	NOZZLE	FLANGE	COMMENTS
A	12" X 16"	ELLIPT.	300#	SA106 GR C	---	w/ NEOPRENE RUBBER GASKET
B	---	RFSO	150#	SA106 GR B	SA105	---
C	---	HALF CPLG	3000#	SA105	---	---

		Highland Tank®	
8000 GALLON 84"Ø ABOVEGROUND HORIZONTAL CHLORINE CONTACT VESSEL			
CUSTOMER:			
PROJECT:			
QUOTE NO:			CHK'D BY:
SCALE: 1/4" = 12"	DATE:	DWG. BY:	DWG. NO: 08000CCPV84