

## CUSTOMER APPROVAL

THE CUSTOMER HAS REVIEWED THIS  
DRAWING AND VERIFIED THE ACCURACY OF  
ALL INFORMATION AND DIMENSIONS.

SIGNED: \_\_\_\_\_

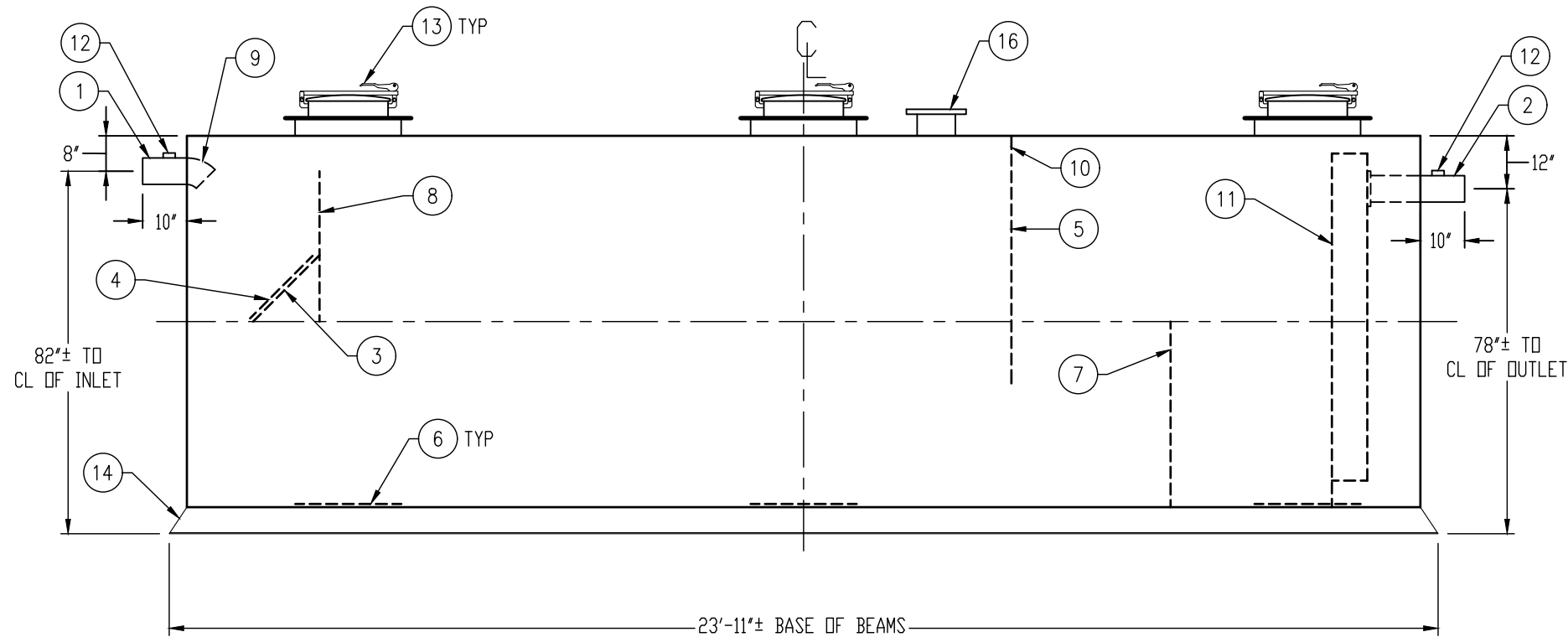
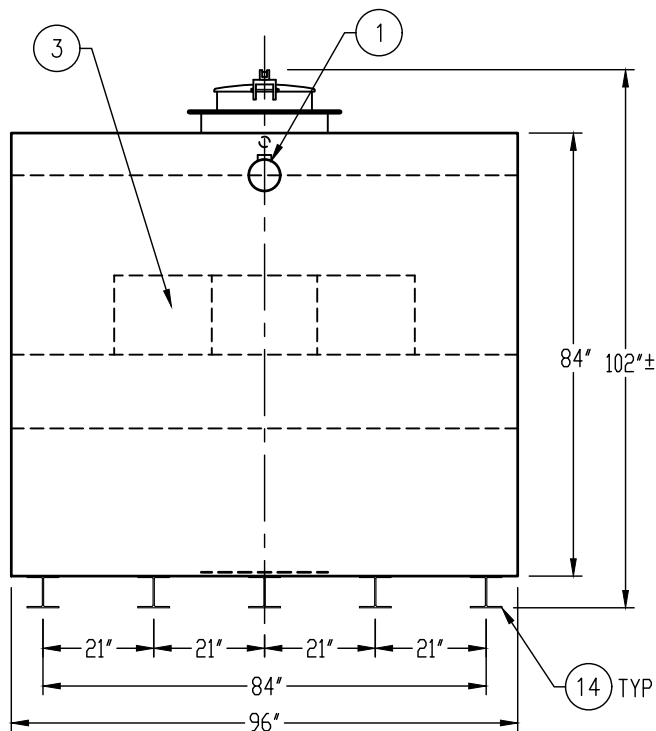
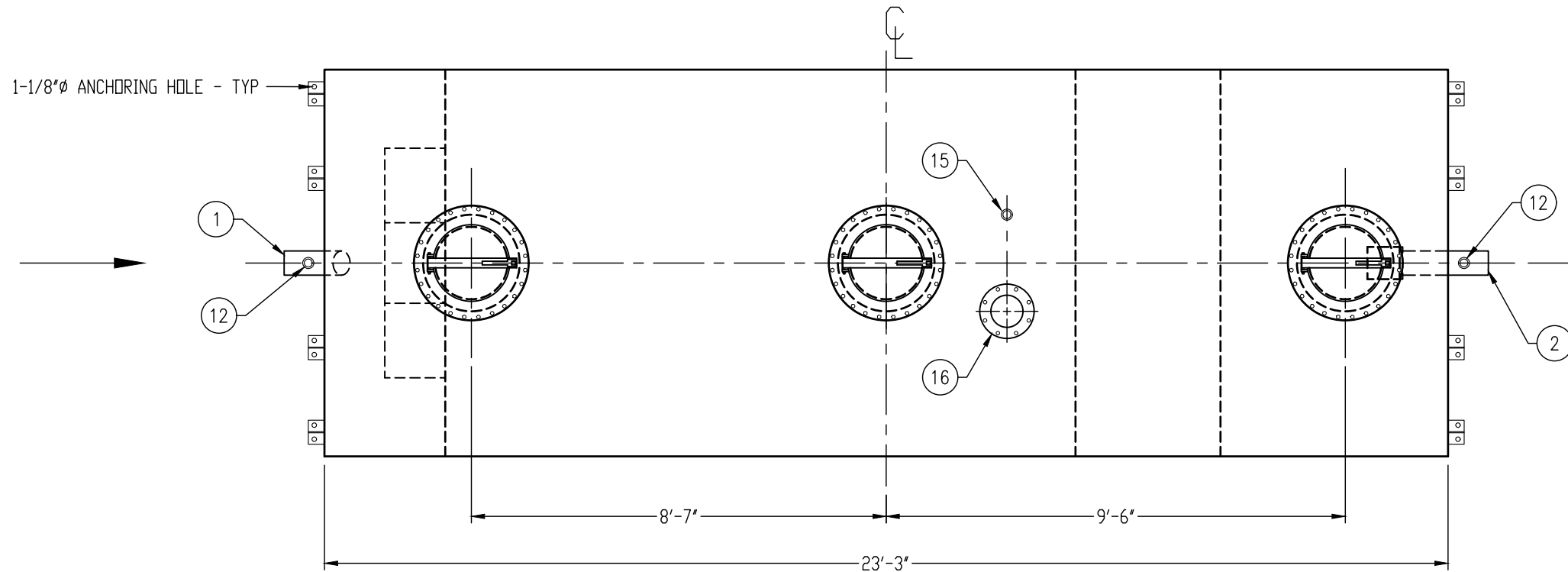
DATE: \_\_\_\_\_

## GENERAL SPECIFICATIONS

QUANTITY: ONE (1)  
MODEL: PGI-8000-2 AR  
CAPACITY: 8,000 GALLONS  
TYPE: SINGLE WALL, ABOVEGROUND  
MATERIAL: 1/4" CARBON STEEL  
LAP FIT AND WELD INTERIOR AND EXTERIOR SEAMS  
SURFACE PREP: SSPC-SP 10 BLAST INTERIOR SURFACES  
SSPC-SP 6 BLAST EXTERIOR SURFACES  
EXT. COATING: WHITE URETHANE - 3-5 MILS  
INT. COATING: CHEMTHANE 4200 PW (15 MILS DFT)  
OPERATING PRESSURE: ATMOSPHERIC  
GREASE HOLDING CAPACITY: 20,265 LBS

## PROVIDED EQUIPMENT

1. 6"Ø SCH 40 PIPE STUB - INLET
2. 6"Ø SCH 40 PIPE STUB - OUTLET
3. DIFFUSION PLATE - 1/4"
4. 20" x 20" WEAR PLATE - 1/4"
5. GREASE DAM - 1/4"
6. STRIKER PLATE
7. SLUDGE BAFFLE - 1/4"
8. UNDERFLOW BAFFLE - 1/4"
9. 6"Ø 45° DIFFUSION ELBOW
10. 2"Ø OPENING FOR AIR CIRCULATION
11. STEEL OUTLET DOWNCOMER BAFFLE WITH OPEN TOP
12. 2" HC - VENT
13. 24"Ø MANWAY WITH 18" EASY-ACCESS HATCH
14. (5) W6x15 BEAM RUNNER WITH (2) 1-1/8" HOLES AT EACH TAPERED END FOR ANCHORING
15. 2" HC - NORMAL TANK VENT
16. 8"Ø-150# FFSO FLANGE FOR EMERGENCY VENT



NOTE:  
ALL RIGHTS RESERVED. THIS DRAWING, OR ANY PART THEREOF, MUST NOT  
BE REPRODUCED IN ANY FORM WITHOUT WRITTEN PERMISSION FROM  
HIGHLAND TANK UNLESS OTHERWISE NOTED. HIGHLAND TANK SHALL BE  
RESPONSIBLE ONLY FOR ITEMS INDICATED ON THIS FABRICATION DRAWING.  
THE CUSTOMER IS RESPONSIBLE FOR VERIFYING THE CORRECTNESS OF  
THE TYPE, SIZE, AND LOCATION OF ALL FITTINGS, ACCESSORIES, AND  
COATINGS SHOWN ON THIS DRAWING.

**Highland Tank®**

PASSIVE GREASE INTERCEPTOR  
8,000 GALLON DOUBLE-BASIN

CUSTOMER: \_\_\_\_\_

PROJECT: \_\_\_\_\_

QUOTE NO.: \_\_\_\_\_

SCALE: \_\_\_\_\_

DATE: \_\_\_\_\_

DWG. BY: \_\_\_\_\_

DWG. NO.: \_\_\_\_\_

ORDER: \_\_\_\_\_

DIMENSION TOLERANCE: ± 1"

NTS

3/9/20

MGS

PGI-8000-2 AR