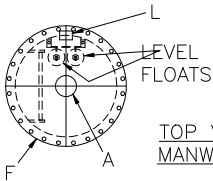
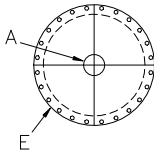


NOTE: ALL RIGHTS RESERVED. THIS DRAWING MUST NOT BE REPRODUCED IN ANY FORM WITHOUT THE WRITTEN PERMISSION OF HIGHLAND TANK. HIGHLAND TANK SHALL BE RESPONSIBLE ONLY FOR ITEMS INDICATED ON THIS FABRICATION DRAWING UNLESS OTHERWISE NOTED. CUSTOMER IS RESPONSIBLE FOR VERIFYING CORRECTNESS OF SIZE AND LOCATION OF FITTINGS, ACCESSORIES, AND COATINGS SHOWN ON THIS DRAWING.

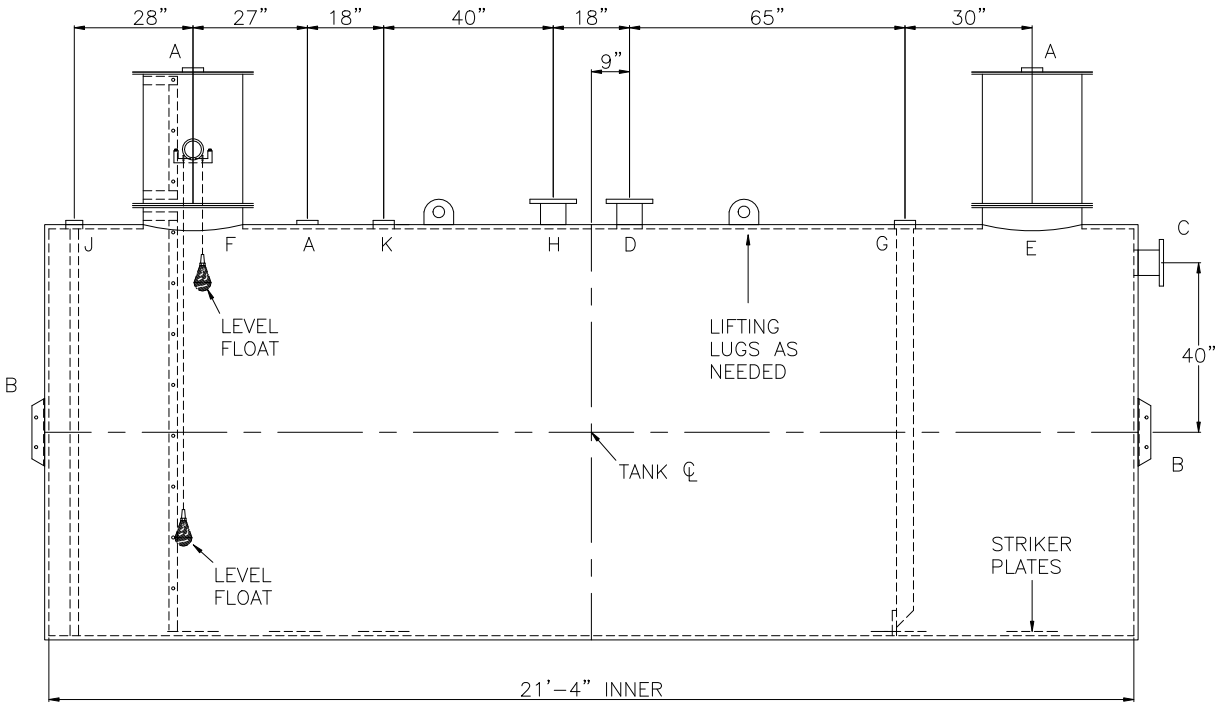
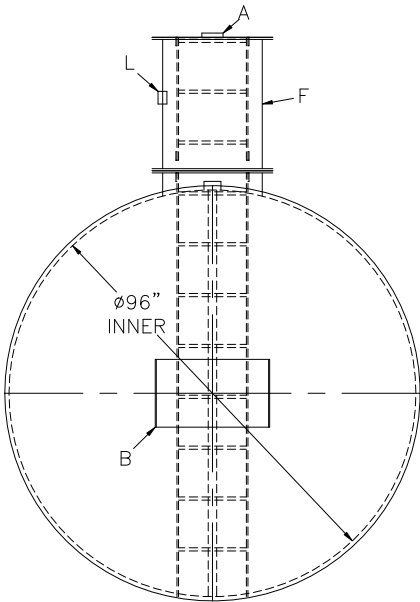
- NOTES:
- 1) THE HIGHGUARD TANK IS NOT APPROVED FOR THE STORAGE OF HEATED PRODUCTS.
  - 2) 15,000 VOLT SPARK TEST PROVIDED AT FACTORY.
  - 3) SHOP TO INSTALL 1/4"x12" STRIKER PLATES, ROLLED AND SEAL WELD TO THE TANK.



TOP VIEW OF  
MANWAY F



TOP VIEW OF  
MANWAY E



DESIGN DATA

CAPACITY – 8,000 GALLONS
TYPE – DOUBLE WALL, WASTEWATER STORAGE TANK
NO. REQ. – –
OPERATING PRESSURE – ATMOSPHERIC
TANK MATERIAL – MILD CARBON STEEL
THICKNESS INNER –HEADS: 1/4 GA, SHELL: 1/4"
THICKNESS OUTER –HEADS: 7 GA, SHELL: 10 GA
*GA THK. BASED ON 60" MAX. BURIAL DEPTH
CONSTRUCTION –
INNER TANK – FLAT FLANGED, HEADS LAP WELD INTERIOR AND EXTERIOR
OUTER TANK – LAP WELD OUTSIDE ONLY
TANK TEST – INNER – 5 PSIG
OUTER – 2 PSIG AND FULL VACUUM
INT. FINISH – SP10 BLAST, HighDRO®–LINER PLUS
EXT. FINISH – SP6 BLAST, 75 MILS POLYURETHANE
LABEL – HIGHGUARD

LEGEND

A	4" FITTING	G	4" FITTING WITH 4" SCH 40 DROP PIPE
B	HTM SPIN BRK'T – MFG USE ONLY – NOT TO BE USED FOR FIELD INSTALLATION	H	FLANGE – SECONDARY VENT
C	FLANGE – LOCATE ON VERTICAL CL – INLET	J	2" INTERNAL MONITOR PIPE
D	FLANGE – PRIMARY VENT	K	4" FNPT FITTING–SPARE
E	24" x 1/4" PLATE TIGHT BOLT MANWAY WITH 3/8" THICK NEO–CORK GASKET AND BOLT ON EXTENSION – EXTENSION SHIPS LOOSE FOR INSTALLATION ON SITE BY OTHERS	L	2" FULL COUPLING (ELECTRICAL CONNECTION)
F	24" x 1/4" PLATE TIGHT BOLT MANWAY WITH 3/8" THICK NEO–CORK GASKET AND BOLT ON EXTENSION – EXTENSION SHIPS LOOSE FOR INSTALLATION ON SITE BY OTHERS, ACCESS LADDER INCLUDED.		

# Highland Tank

UNLESS NOTED, TOLERANCES ARE +/- 1"

## HighDRO® WATER STORAGE TANK

8,000 GAL 96"Ø DOUBLE–WALL UNDERGROUND FOR WASTEWATER STORAGE

CUSTOMER:

PROJECT:

QUOTE NO:

CHK'D BY:

SCALE: 3/8"=1'-0" DATE:

DWG. BY:

DWG. NO.: 8000HGDWHDWWST96