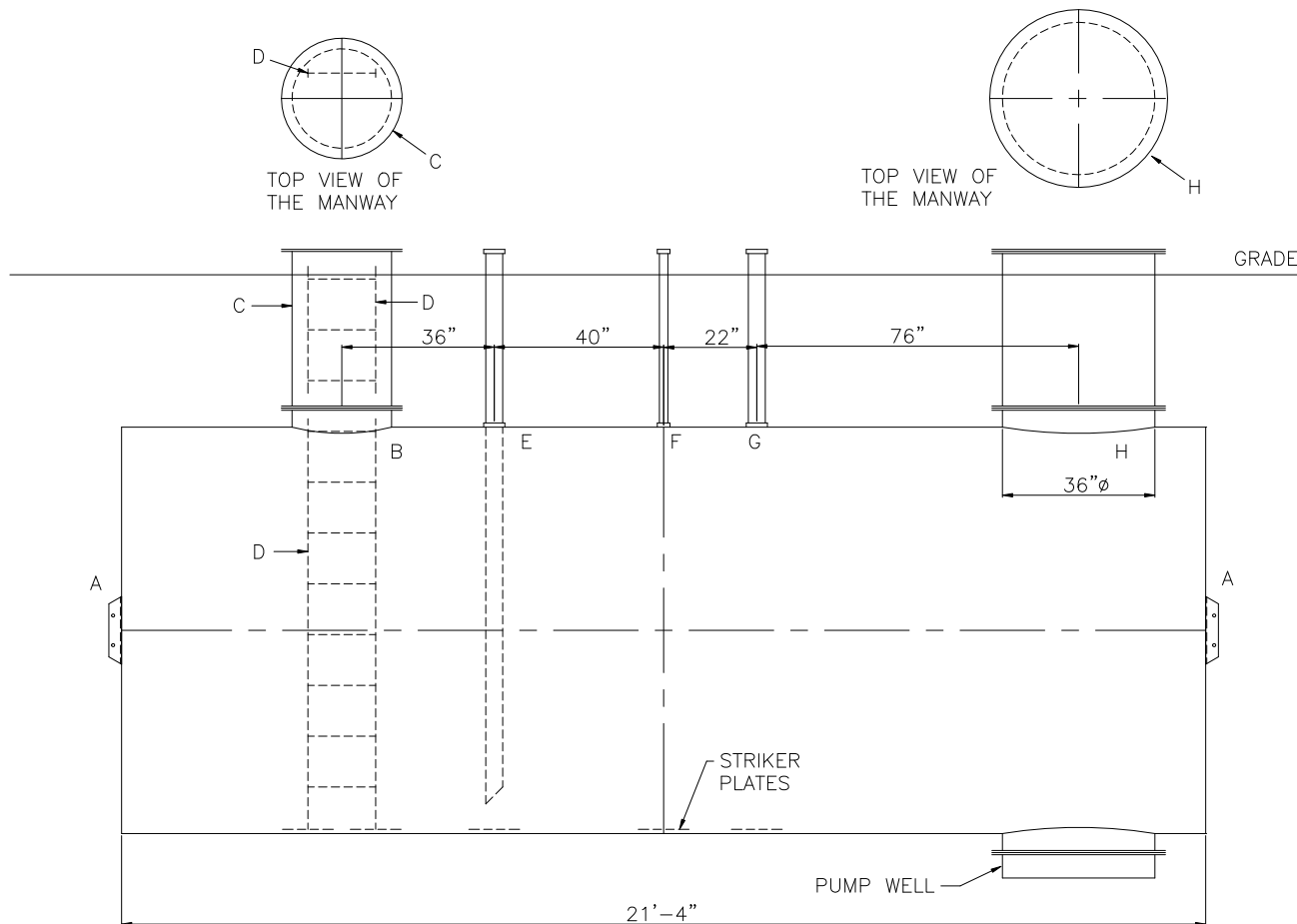
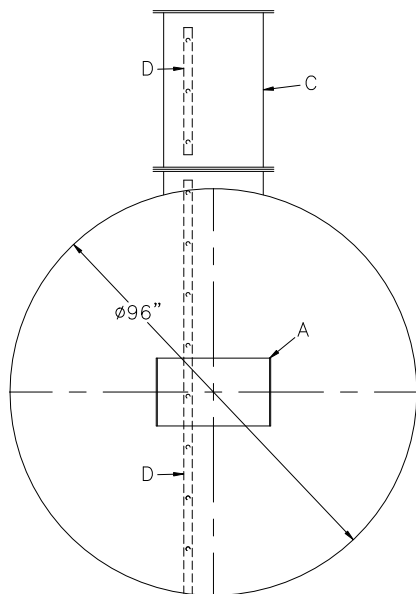


NOTE: ALL RIGHTS RESERVED. THIS  
DRAWING MUST NOT BE REPRODUCED IN  
ANY FORM WITHOUT THE WRITTEN  
PERMISSION OF HIGHLAND TANK®.  
HIGHLAND TANK® SHALL BE RESPONSIBLE  
ONLY FOR ITEMS INDICATED ON THIS  
FABRICATION DRAWING UNLESS OTHERWISE  
NOTED. CUSTOMER IS RESPONSIBLE FOR  
VERIFYING CORRECTNESS OF SIZE AND  
LOCATION OF FITTINGS, ACCESSORIES, AND  
COATINGS SHOWN ON THIS DRAWING.



## DESIGN DATA

CAPACITY – 8,000 GALLONS
TYPE – SINGLE WALL, HIGHGUARD UNDERGROUND
NO. REQ. – –
OPERATING PRESSURE – ATMOSPHERIC
TANK MATERIAL – MILD CARBON STEEL
THICKNESS – HEADS– 1/4"
THICKNESS – SHELL– .225"
*GA THK. BASED ON 60" MAX. BURIAL DEPTH
CONSTRUCTION – FLAT FLANGED HEADS, LAP WELD INSIDE & OUTSIDE
TANK TEST – 5 PSIG
INT. FINISH – SSPC SP10 BLAST, HighDRO®–LINER PLUS FOR NFPA 22 APPLICATIONS
EXT. FINISH – SP6 BLAST, 75 MILS POLYURETHANE
LABEL – UL–1746 PART IV, HIGHGUARD

NOTES:

- 1) THE HIGHGUARD TANK IS NOT APPROVED FOR THE STORAGE OF HEATED PRODUCTS.
- 2) 15,000 VOLT SPARK TEST PROVIDED AT FACTORY.
- 3) SHOP TO INSTALL 1/4"x12"x12" STRIKER PLATES, ROLLED AND SEAL WELD TO THE TANK.

## LEGEND

A	HTM SPIN BRK'T – MFG USE ONLY – NOT TO BE USED FOR FIELD INSTALLATION	G	FNPT FITTING (VENT CONNECTION)
B	24"Ø TIGHT BOLT MANWAY w/ 1/8" NEO-CORK GASKET MATERIAL.	H	<u>FIRE PUMP OPTION</u>
C	24"Ø MANWAY EXTENSION & COVER PLATE		36"Ø TIGHT BOLT MANWAY & MANWAY EXTENSION w/ 1/8" NEO-CORK GASKET MATERIAL AND FIRE PUMP W/ DISCHARGE CONNECTION, BOTTOM SUMP PUMP WELL
D	16" WIDE INTERNAL LADDER W/ 3/4" RUNGS ON 12" SPACING.		
E	FNPT FITTING WITH SCH 40 DROP TO WITHIN 6" OF TANK BOTTOM (FILL CONNECTION)		
F	2" FNPT FITTING (SENSOR CONNECTION)		

