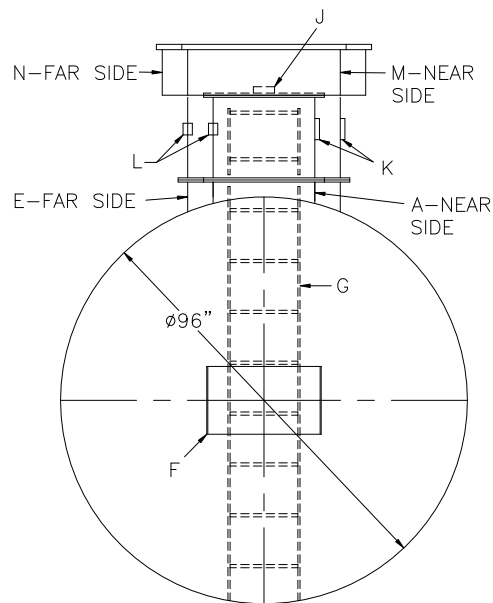
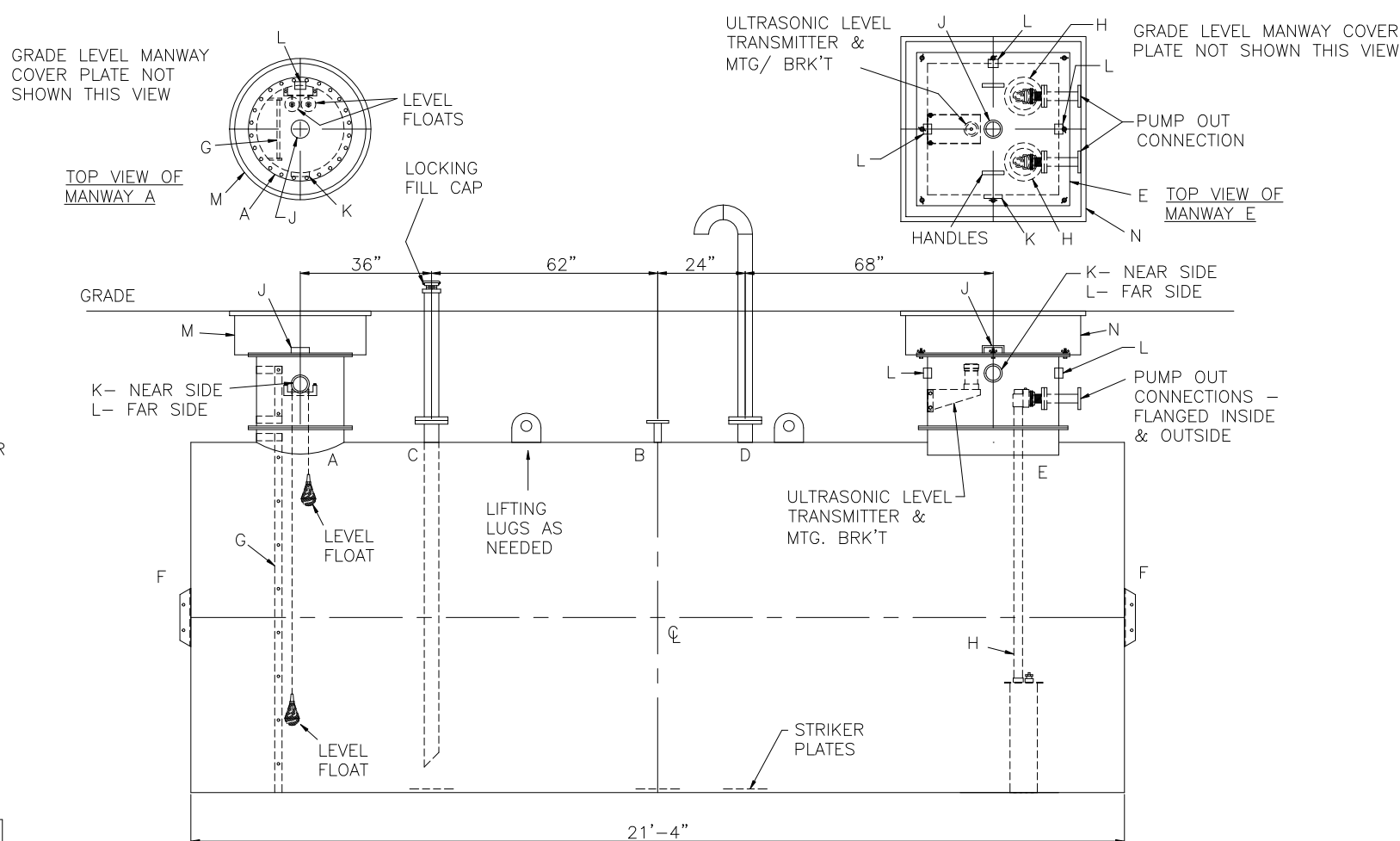


NOTES:

- 1) THE HIGHGUARD TANK IS NOT APPROVED FOR THE STORAGE OF HEATED PRODUCTS.
- 2) 15,000 VOLT SPARK TEST PROVIDED AT FACTORY.
- 3) SHOP TO INSTALL 1/4"x12"x12" STRIKER PLATES, ROLLED AND SEAL WELD TO THE TANK.



CAPACITY – 8,000 GALLONS
TYPE – SINGLE WALL, HIGHGUARD UNDERGROUND
NO. REQ. – –
OPERATING PRESSURE – ATMOSPHERIC
TANK MATERIAL – MILD CARBON STEEL
THICKNESS – HEADS– 1/4"
THICKNESS – SHELL– 1/4"
*GA THK. BASED ON 60" MAX. BURIAL DEPTH
CONSTRUCTION – FLAT FLANGED HEADS, LAP WELD INSIDE & OUTSIDE
TANK TEST – 5 PSIG
INT. FINISH – SP10 BLAST HighDRO®-LINER PLUS FOR NSF 61 APPLICATIONS
EXT. FINISH – SP6 BLAST, 75 MIL POLYURETHANE
LABEL – UL-1746 PART IV, HIGHGUARD



NOTE: AT LEAST ONE 2" VENT PIPE MUST BE INSTALLED IN EACH MANWAY RISER

A	24"Ø TIGHT BOLT MANWAY w/ 1/8" THK. EPDM GASKET & MANWAY EXTENSION	G	16" WIDE INTERNAL LADDER W/ 3/4" RUNGS ON 12" SPACING.
B	150# RF50 FLANGE WITH SCH 40 DROP TO WITHIN 6" OF TANK BOTTOM (FILL CONNECTION)	H	PUMPS
C	2" 150# RF50 FLANGE	J	4" FNPT FITTING (GAUGE)
D	150# RF50 FLANGE w/ GOOSENECK VENT (VENT CONNECTION)	K	4" FNPT FITTING (VENT)
E	36" x 36" SQ. MANWAY w/ 1/8" THK. EPDM GASKET & MANWAY EXTENSION W/ ALUMINUM COVER PLATE AND HANDLES	L	2" FULL COUPLING (ELECTRICAL CONNECTION)
		M	GRADE LEVEL MANWAY – 36"Ø H–20 W/ LOCKABLE COVER PLATE
F	HTM SPIN BRK'T – MFG USE ONLY – NOT TO BE USED FOR FIELD INSTALLATION	N	GRADE LEVEL MANWAY – 48" x 48" H–20 W/ LOCKABLE COVER PLATE



Highland Tank

UNLESS NOTED, TOLERANCES ARE $\pm 1''$

HighDRO WATER STORAGE TANK
8,000 GAL 96"Ø SINGLE-WALL UNDERGROUND HORIZONTAL
FOR POTABLE WATER WITH PUMP OUT

CUSTOMER:

PROJECT:

QUOTE NO:

SCALE:
3/8"=1'-0"

DWG. BY:

CHK'D BY:

DWG. NO.:

08000HGSWHDPTP096