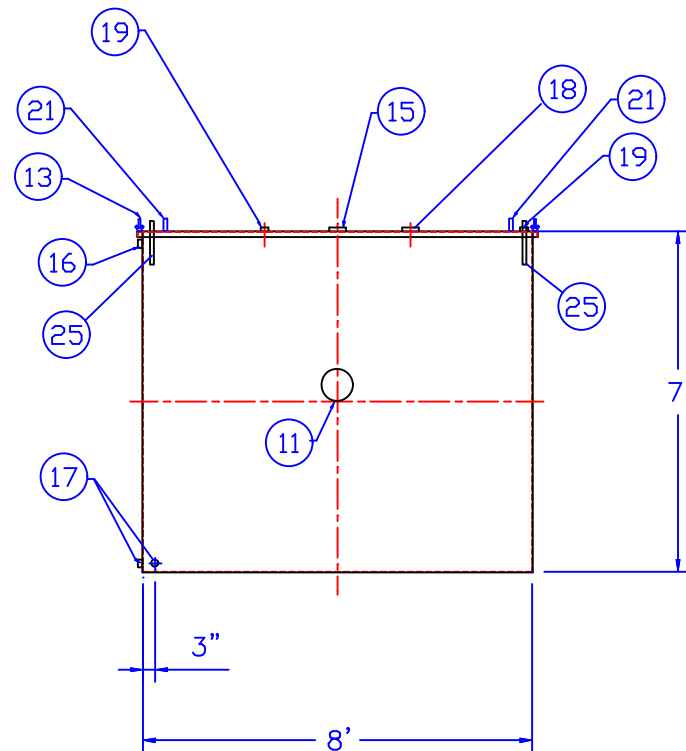
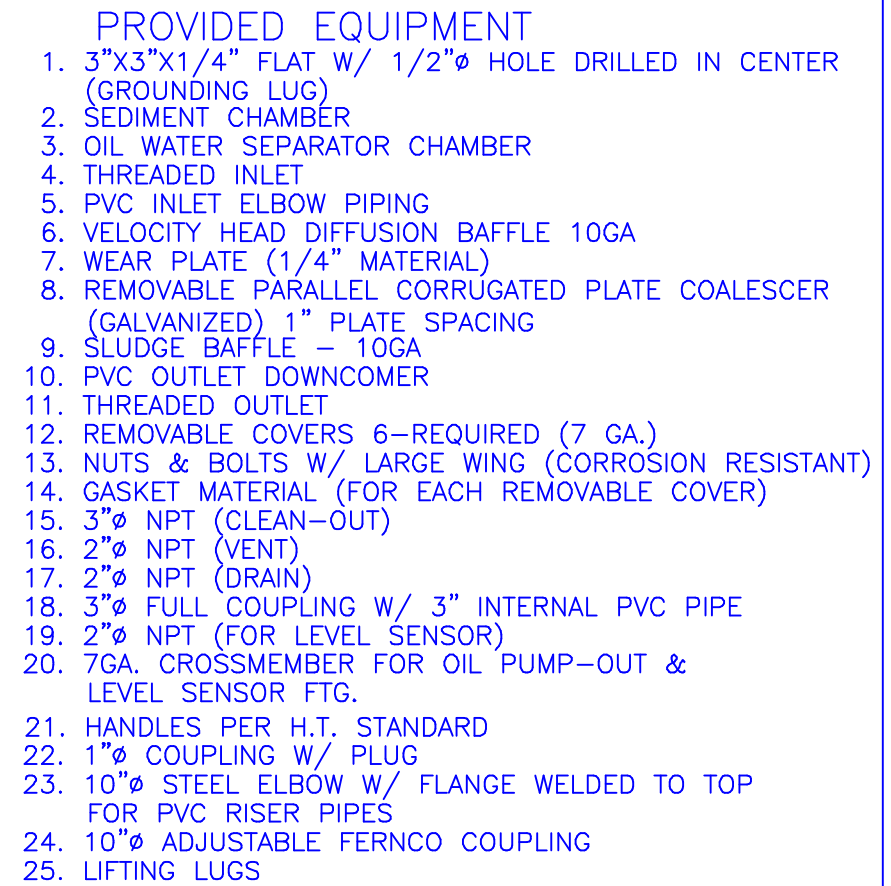


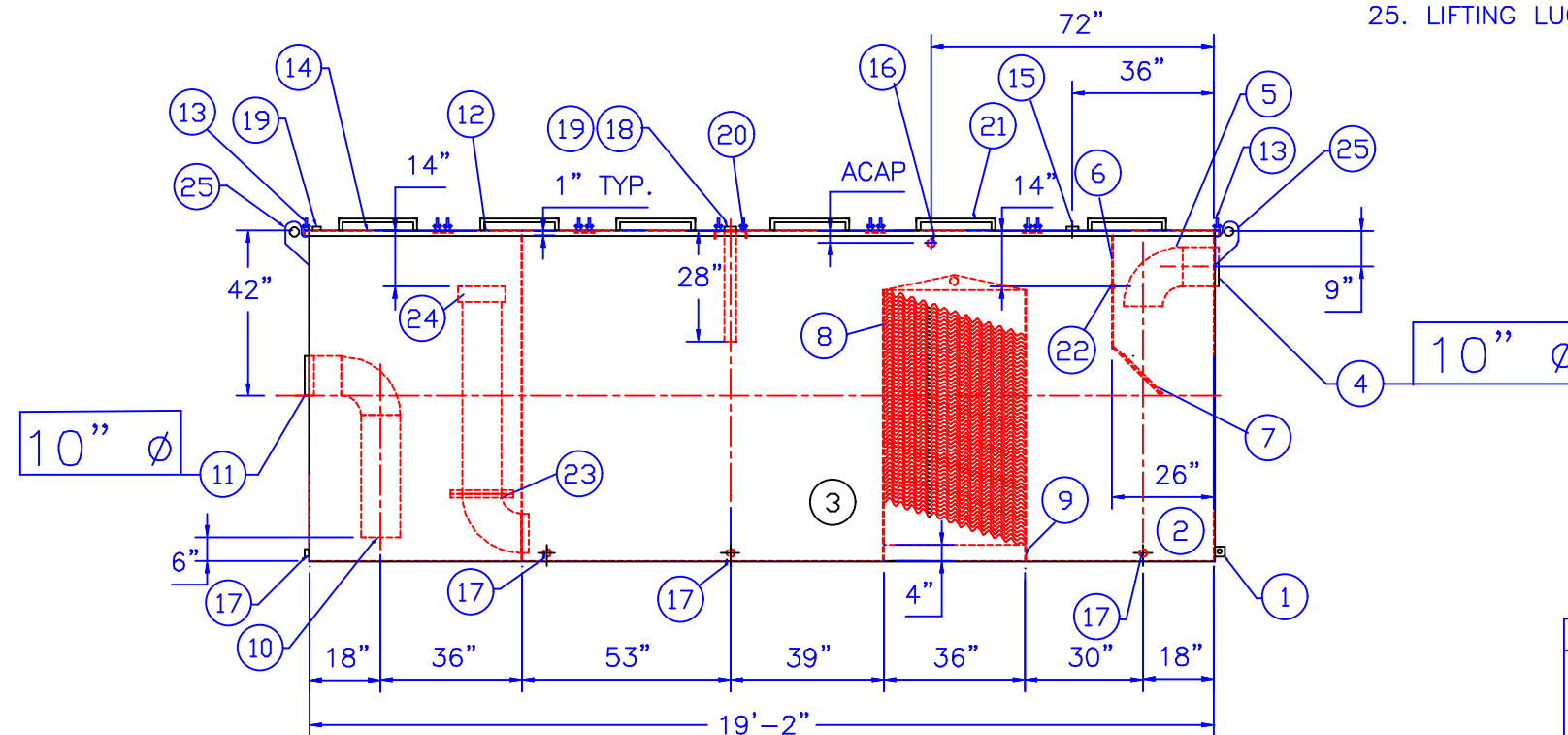
NO. REQ'D: (1)  
CAPACITY: 8000 GALLONS  
SPILL CAPACITY: 2400 GALLONS  
TYPE: RECTANGULAR, HT, ABOVEGROUND, SINGLE WALL  
MATERIAL: MILD CARBON STEEL  
APPROX. WEIGHT: 15800 LBS.  
FLOW RATE: 800 GPM  
GAUGE:  
1/4" THROUGHOUT  
SURFACE PREP:  
SSPC NO.10 BLAST ALL INTERIOR SURFACES  
SSPC NO.6 BLAST ALL EXTERIOR SURFACES  
COATING: MATERIAL THICKNESS  
EXTERIOR- FINISH PAINT WHITE (3 MILS)  
INTERIOR- POLYURETHANE (15 MILS)  
CONSTRUCTION:  
BUTT FIT AND WELD ALL CORNERS IN & OUT

NOTE:

1. ALL INTERNAL MATERIAL IS 10 GA.
2. ALL FITTINGS MUST SHIP W/ STEEL PLUGS INSTALLED
3. LIFTING LUGS DO NOT HAVE REINFORCING PLATES




END VIEW



## ELEVATION

NOTE :  
ALL RIGHTS RESERVED. THIS DRAWING OR ANY PART THEREOF MUST NOT BE REPRODUCED IN ANY FORM WITHOUT THE WRITTEN PERMISSION OF HIGHLAND TANK.  
HIGHLAND TANK SHALL BE RESPONSIBLE ONLY FOR ITEMS INDICATED ON THIS FABRICATION DRAWING UNLESS OTHERWISE NOTED. CUSTOMER IS RESPONSIBLE FOR VERIFYING CORRECTNESS OF SIZE / LOCATION OF FITTINGS , ACCESSORIES & COATINGS SHOWN ON THIS DRAWING

REVISIONS			
		<h1>Highland Tank</h1>	
8000 GALLON OIL WATER SEPARATOR RECTANGULAR, HT, SINGLE WALL			
CUSTOMER:			
PROJECT:			
QUOTE NO:			CHK'D BY:
SCALE: 1/4"=1'-0"	DATE:	DWG. BY:	DWG. NO.: 08000 RHTSW