

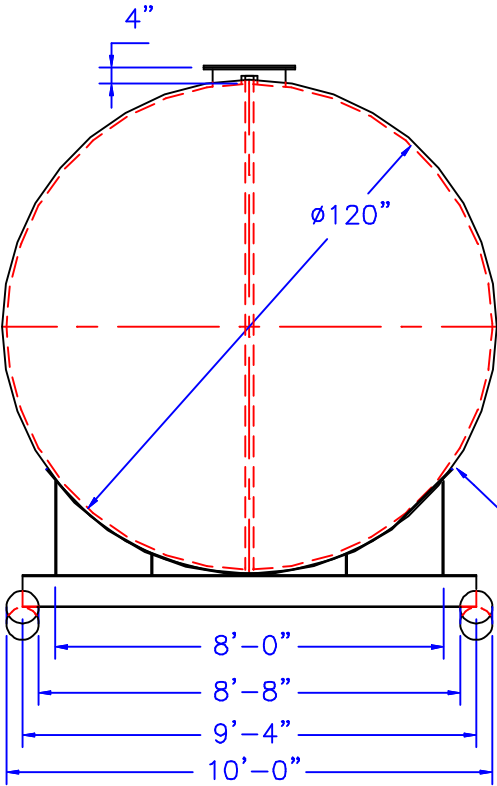
NOTE :
ALL RIGHTS RESERVED. THIS DRAWING OR ANY PART THEREOF MUST NOT BE REPRODUCED IN ANY FORM WITHOUT THE WRITTEN PERMISSION OF HIGHLAND TANK.
HIGHLAND TANK SHALL BE RESPONSIBLE ONLY FOR ITEMS INDICATED ON THIS FABRICATION DRAWING UNLESS OTHERWISE NOTED. CUSTOMER IS RESPONSIBLE FOR VERIFYING CORRECTNESS OF SIZE / LOCATION OF FITTINGS , ACCESSORIES & COATINGS SHOWN ON THIS DRAWING

FITTING SCHEDULE

- A= 4"ø NPT
- B= 18"ø LOOSE BOLT MANHOLE FOR PRIMARY EMERGENCY VENT
- C= 2"ø NPT (FITTING FOR LEAK DETECTION W/INTERNAL PIPE)
- D= 8"ø FULL COUPLING FOR SECONDARY EMERGENCY VENT (NOT TO PENETRATE INNER TANK)

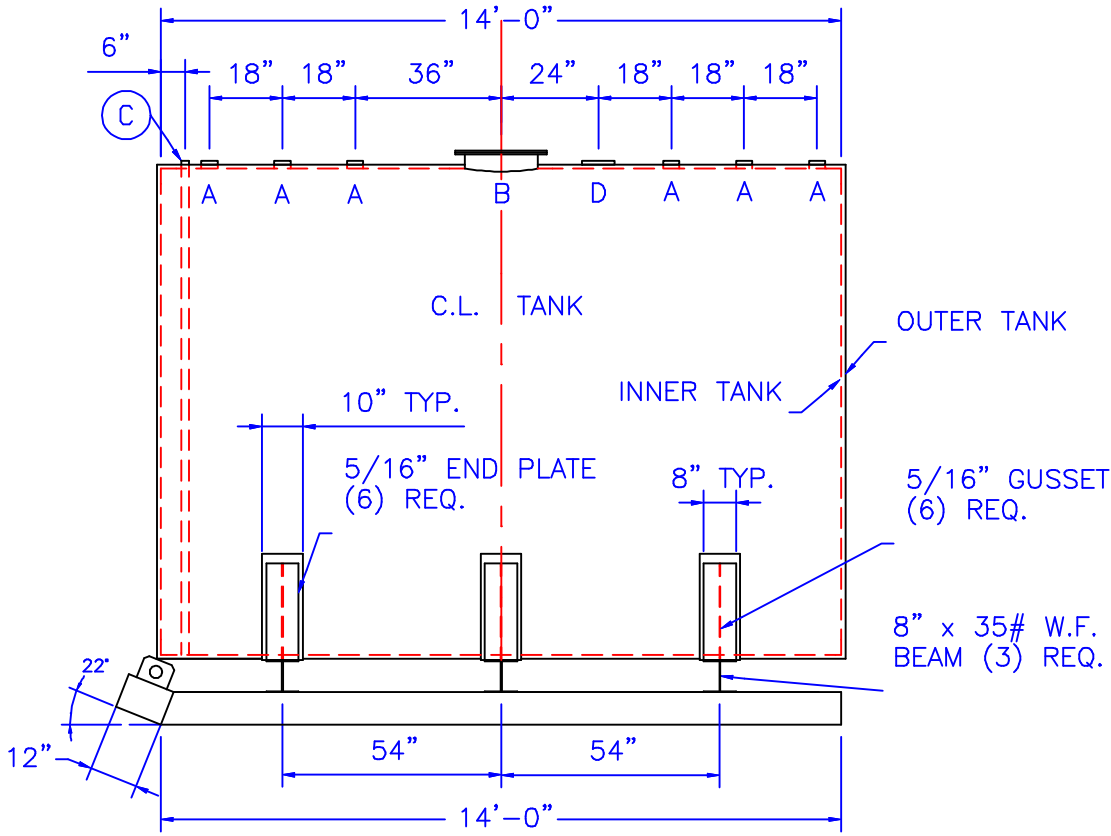
GENERAL NOTES

CAPACITY : 8,000 GALLONS
TYPE : I 360 DOUBLE WALL, ABOVEGROUND, HEAVY DUTY SKID
NO. REQ. :(1)
MATERIAL : MILD CARBON STEEL
TEST : 5 P.S.I.
MIN. GAUGE OR THICKNESS (PER U.L. 142):
INNER HEADS : 5/16" OUTER HEADS : 7 GA.
INNER SHELL : 1/4" OUTER SHELL : 7 GA.
PAINT :
 INTERIOR : NONE
 EXTERIOR : RED PRIMER
CONSTRUCTION: FLAT FLANGED HEADS, LAP WELD ALL EXTERIOR SEAMS ONLY
APPROVED LABELS : U.L. 142
OPERATING PRESSURE– ATMOSPHERIC




END VIEW

125" x 10" x 1/4"
BELLY BAND (3) REQ.



ELEVATION

REVISIONS				
		<h1>Highland Tank</h1>		
8,000 GALLON ABOVEGROUND HORIZONTAL DOUBLE WALL TYPE I 360 W/ SKID				
CUSTOMER:				
PROJECT:				
QUOTE NO:				CHK'D BY:
SCALE: 1/4"=1'-0"	DATE:	DWG. BY:	DWG. NO.: 08000SKHDDW120	