

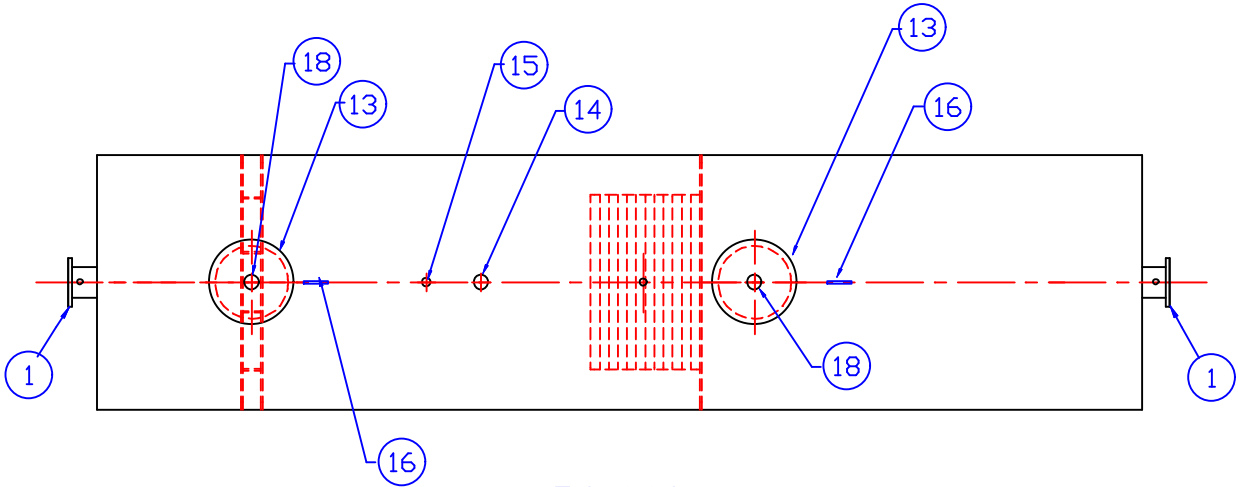
GENERAL SPECIFICATIONS

NO. REQ'D: (1)  
CAPACITY: 8,000 GALLONS  
TYPE: HTC, ABOVEGROUND, SINGLE WALL  
MATERIAL: MILD CARBON STEEL  
FLOW RATE: 800 GPM  
GAUGE:  
SHELL- .225"  
HEADS- 1/4"  
SURFACE PREP:  
SSPC NO.6 BLAST ALL EXTERIOR SURFACES

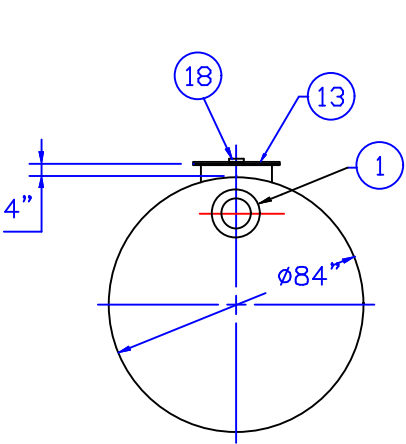
COATING: MATERIAL THICKNESS  
EXTERIOR- RED PRIMER (3 MILS)  
INTERIOR-

PROVIDED EQUIPMENT

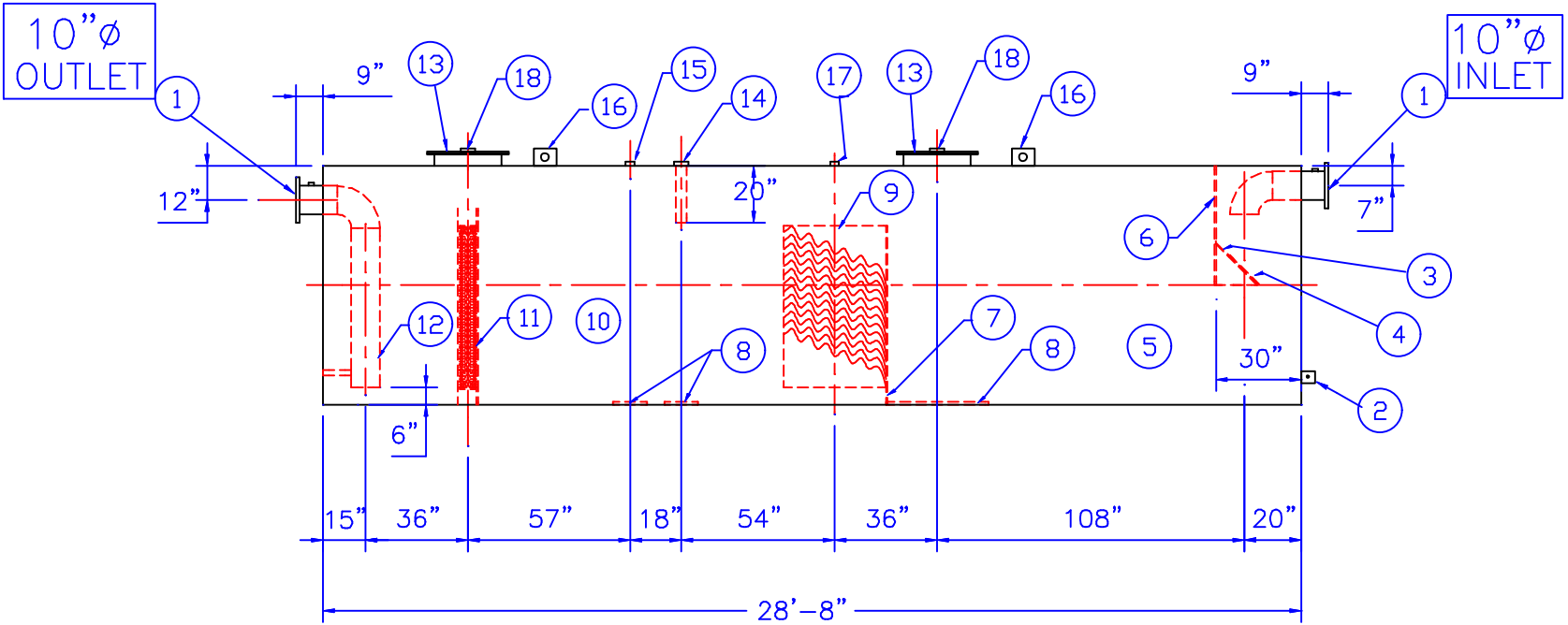
- 1. 150# R.F.S.O. FLANGE W/ 2"Ø NPT FOR VENT
- 2. 3"X3"X1/4"GROUNDING LUG W/ 1/2"Ø HOLE
- 3. VELOCITY HEAD DIFFUSION BAFFLE
- 4. WEAR PLATE
- 5. SEDIMENT CHAMBER
- 6. UNDERFLOW BAFFLE
- 7. SLUDGE BAFFLE
- 8. STRIKER PLATES
- 9. PARALLEL CORRUGATED PLATE COALESCER
- 10. OIL/WATER SEPARATOR CHAMBER
- 11. 6" THICK COALESCER MATERIAL INSTALLED W/ PULL ROD SHIPPED LOOSE
- 12. OUTLET DOWNCOMER
- 13. 24"Ø MANWAY
- 14. 4"Ø FTG. FOR OIL PUMPOUT W/ INTERNAL PIPE INSTALLED
- 15. 2"Ø FTG. FOR LEVEL SENSOR
- 16. LIFTING LUG LOCATED BY H.T. FABRICATION SHOP
- 17. 2"Ø FTG. FOR VENT
- 18. 4"Ø FTG. FOR GAUGE WITH PLUG



PLAN



END VIEW



ELEVATION

NOTE :  
ALL RIGHTS RESERVED. THIS DRAWING OR ANY PART THEREOF MUST NOT BE REPRODUCED IN ANY FORM WITHOUT THE WRITTEN PERMISSION OF HIGHLAND TANK.  
HIGHLAND TANK SHALL BE RESPONSIBLE ONLY FOR ITEMS INDICATED ON THIS FABRICATION DRAWING UNLESS OTHERWISE NOTED. CUSTOMER IS RESPONSIBLE FOR VERIFYING CORRECTNESS OF SIZE / LOCATION OF FITTINGS , ACCESSORIES & COATINGS SHOWN ON THIS DRAWING

REVISIONS				
<div><div><div><div><div><span></span></div><div>HIGHLAND TANK &amp; MFG. CO.</div></div></div><div><div><div><span></span></div><div>Highland Tank</div></div></div></div></div>				
8,000 GALLON OIL WATER SEPARATOR HTC, ABOVEGROUND, SINGLE WALL				
CUSTOMER:				
PROJECT:				
QUOTE NO:				CHK'D BY:
SCALE: 3/16"=1'-0"	DATE:	DWG. BY:	DWG. NO.: 8K HTCAGSW	