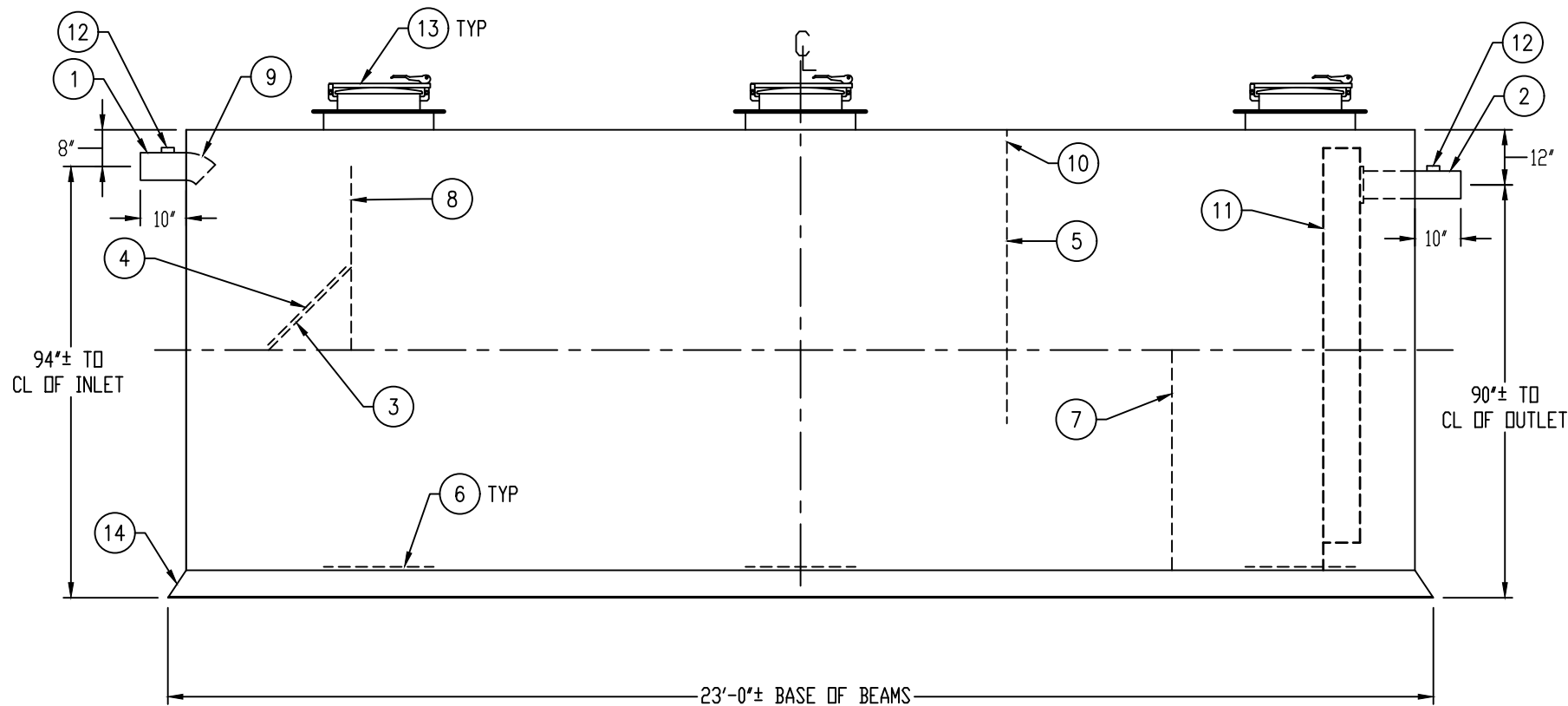
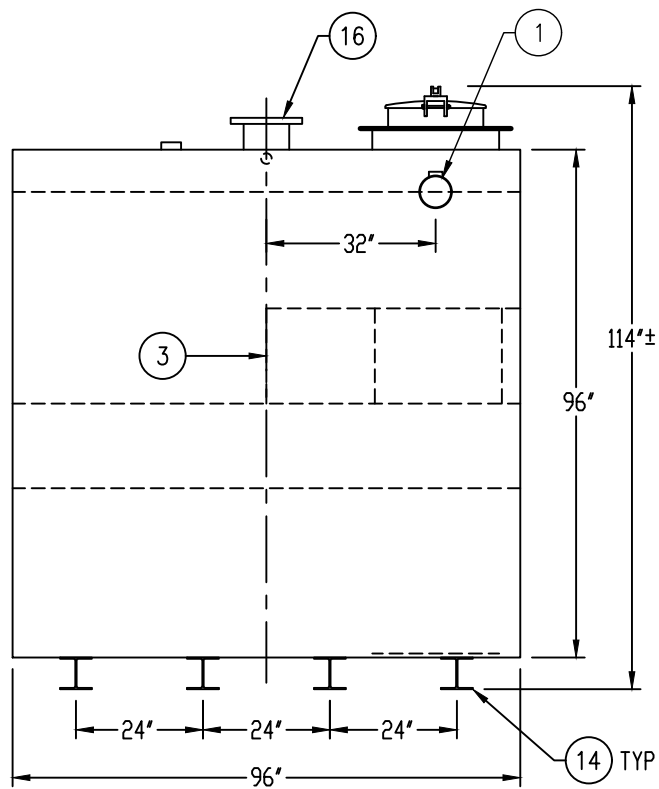


MANWAYS OFFSET FOR EASE OF ACCESS - FLOW DIRECTION CAN BE REVERSED



## GENERAL SPECIFICATIONS

QUANTITY: ONE (1)  
MODEL: PGI-9000-2 AR  
CAPACITY: 9,000 GALLONS  
TYPE: SINGLE WALL, ABOVEGROUND  
MATERIAL: 1/4" CARBON STEEL WITH 5/16" BOTTOM  
LAP FIT AND WELD INTERIOR AND EXTERIOR SEAMS  
SURFACE PREP: SSPC-SP 10 BLAST INTERIOR SURFACES  
SSPC-SP 6 BLAST EXTERIOR SURFACES  
EXT. COATING: WHITE URETHANE - 3-5 MILS  
INT. COATING: CHEMLINE 4200 PW (15 MILS DFT)  
OPERATING PRESSURE: ATMOSPHERIC  
GREASE HOLDING CAPACITY: 22,853 LBS

## PROVIDED EQUIPMENT

- 6"Ø SCH 40 PIPE STUB - INLET
- 6"Ø SCH 40 PIPE STUB - OUTLET
- DIFFUSION PLATE - 1/4"
- 24" x 24" WEAR PLATE - 1/4"
- GREASE DAM - 1/4"
- STRIKER PLATE
- SLUDGE BAFFLE - 1/4"
- UNDERFLOW BAFFLE - 1/4"
- 6"Ø 45° DIFFUSION ELBOW
- 2"Ø OPENING FOR AIR CIRCULATION
- STEEL OUTLET DOWNCOMER BAFFLE WITH OPEN TOP
- 2" HC - VENT
- 24"Ø MANWAY WITH 18" EASY-ACCESS HATCH
- (4) W6x15 BEAM RUNNER WITH (2) 1-1/8" HOLES AT EACH TAPERED END FOR ANCHORING
- 3" HC - NORMAL TANK VENT
- 8"Ø-150# FFSSO FLANGE FOR EMERGENCY VENT

THIS DRAWING IS SUBJECT TO CHANGE AT THE DISCRETION OF THE MANUFACTURER. CONTACT HIGHLAND TANK FOR THE MOST UP-TO-DATE INFORMATION AND DRAWINGS OF OUR PRODUCTS.



# Highland Tank®

PASSIVE GREASE INTERCEPTOR

PGI-9000-2 AR

CUSTOMER:

PROJECT:

QUOTE NO.:

ORDER:

SCALE:

DATE:

DWG. BY:

DWG. NO.:

NTS

10/31/23

MGS

PGI-9000-2 AR

DIMENSION TOLERANCE: ± 1"

NOTE:  
ALL RIGHTS RESERVED. THIS DRAWING, OR ANY PART THEREOF, MUST NOT BE REPRODUCED IN ANY FORM WITHOUT WRITTEN PERMISSION FROM HIGHLAND TANK. UNLESS OTHERWISE NOTED, HIGHLAND TANK SHALL BE RESPONSIBLE ONLY FOR ITEMS INDICATED IN THIS FABRICATION DRAWING. THE CUSTOMER IS RESPONSIBLE FOR VERIFYING THE CORRECTNESS OF THE TYPE, SIZE, AND LOCATION OF ALL FITTINGS, ACCESSORIES, AND COATINGS SHOWN ON THIS DRAWING.