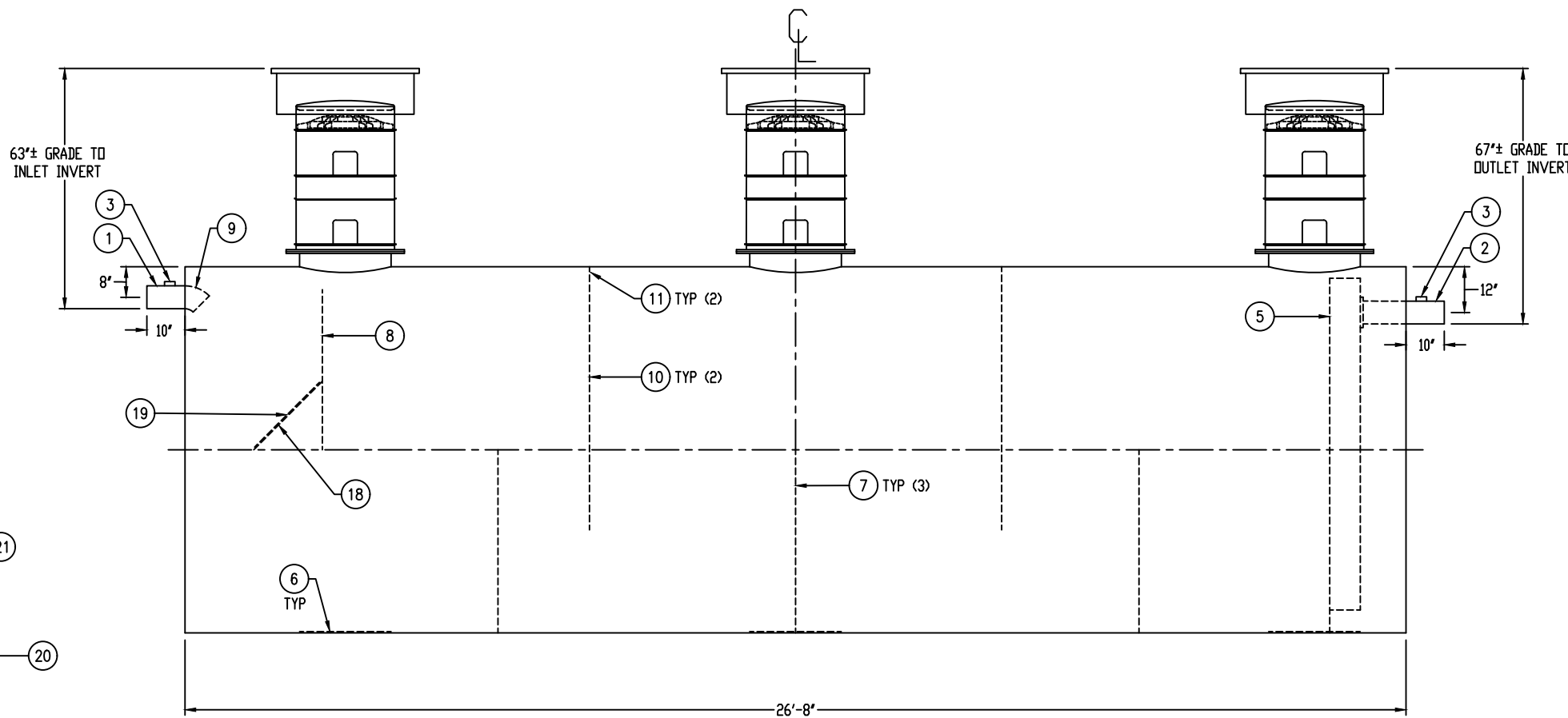
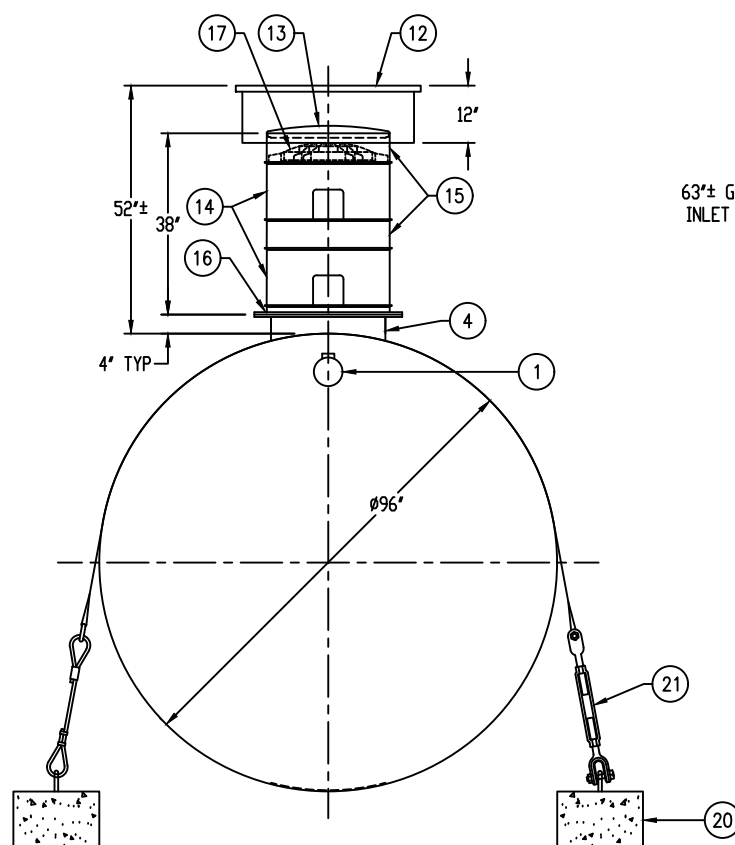
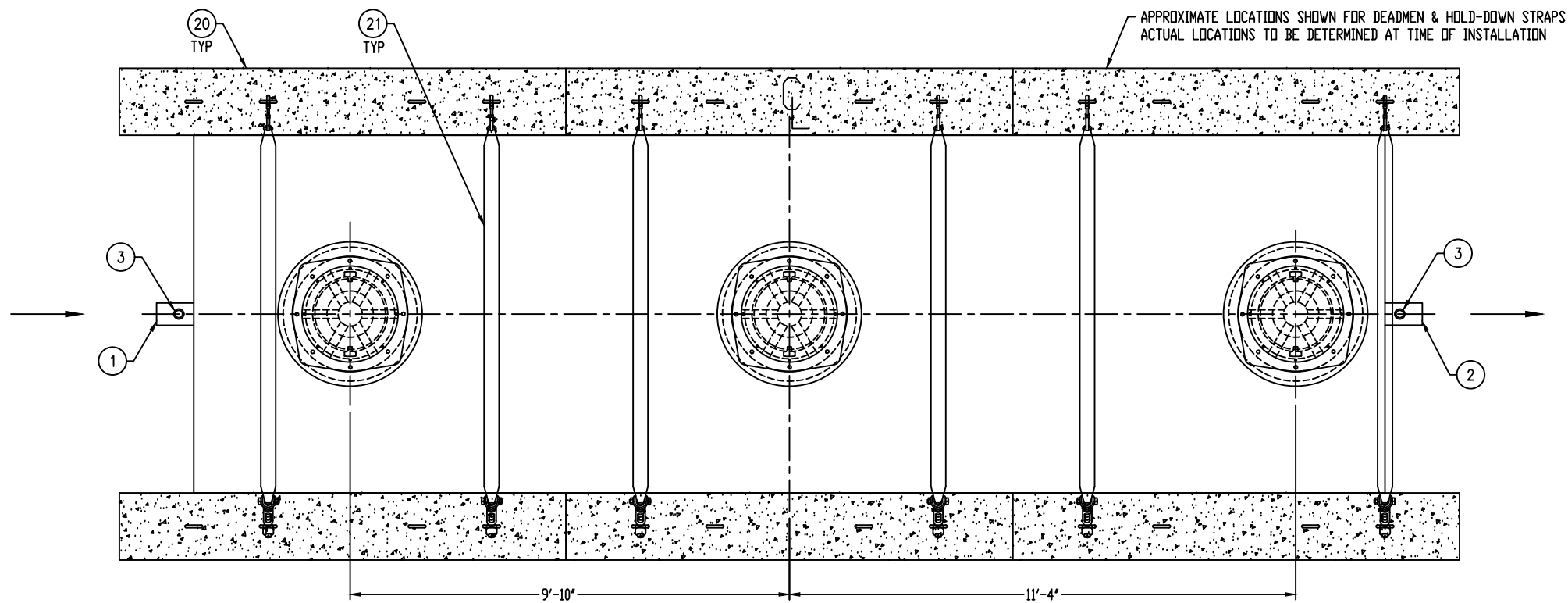


NOTE:
ALL RIGHTS RESERVED. THIS DRAWING, OR ANY PART THEREOF, MUST NOT BE REPRODUCED IN ANY FORM WITHOUT WRITTEN PERMISSION FROM HIGHLAND TANK. UNLESS OTHERWISE NOTED, HIGHLAND TANK SHALL BE RESPONSIBLE ONLY FOR ITEMS INDICATED ON THIS FABRICATION DRAWING. THE CUSTOMER IS RESPONSIBLE FOR VERIFYING THE CORRECTNESS OF THE TYPE, SIZE, AND LOCATION OF ALL FITTINGS, ACCESSORIES, AND COATINGS SHOWN ON THIS DRAWING.



GENERAL SPECIFICATIONS

QUANTITY: ONE (1)
MODEL: PGI-9000-3
OPERATING CAPACITY: 9,026 GALLONS
TYPE: SINGLE WALL, HIGHGUARD, UNDERGROUND
MATERIAL: 5/16" CARBON STEEL
MATERIAL BASED ON 60" MAXIMUM BURIAL DEPTH
LAP FIT AND WELD INTERIOR AND EXTERIOR SEAMS
TANK TEST: 3-5 PSI AIR TEST
SURFACE PREP: SSPC-SP 10 BLAST INTERIOR SURFACES
SSPC-SP 6 BLAST EXTERIOR SURFACES
EXT. COATING: HIGHGUARD POLYURETHANE - 75 MILS
INT. COATING: CHEMTHANE 4200 PW (15 MILS DFT)
OPERATING PRESSURE: ATMOSPHERIC

NOTE: OPTIONAL 2" VENTS ON MANWAY RISERS AT THE DISCRETION OF THE OWNER

PROVIDED EQUIPMENT

1. 6"Ø SCH 40 PIPE STUB – INLET
2. 6"Ø SCH 40 PIPE STUB – OUTLET
3. 2" HC – VENT
4. 24"Ø MANWAY FOR STACKABLE RISER
5. 8" SQUARE STEEL OUTLET BAFFLE WITH OPEN TOP
6. STRIKER PLATE
7. SLUDGE BAFFLE – 5/16"
8. UNDERFLOW BAFFLE – 5/16"
9. 6"Ø 45° DIFFUSION ELBOW
10. GREASE DAM – 5/16"
11. 2" OPENING FOR AIR CIRCULATION
12. 36"Ø GRADE-LEVEL MANWAY – SHIPPED LOOSE
13. 24"Ø PVC COVER
14. 24"Ø x 12" STACKABLE RISER – ALL STACKABLE
RISER COMPONENTS ARE PRE-ASSEMBLED AND
COMPLETE MANWAY RISER IS SHIPPED LOOSE
15. 24"Ø x 6" STACKABLE RISER
16. STACKABLE RISER ADAPTER RING & GASKET
17. STACKABLE RISER SAFETY SCREEN
18. DIFFUSION BAFFLE – 1/4"
19. 24" x 24" WEAR PLATE – 1/4"
20. (6) CDA-15 CONCRETE DEADMAN
21. (6) POLYESTER HOLD-DOWN STRAPS

THIS DRAWING IS SUBJECT TO CHANGE AT THE DISCRETION OF THE MANUFACTURER. CONTACT HIGHLAND TANK FOR THE MOST UP-TO-DATE INFORMATION AND DRAWINGS OF OUR PRODUCTS.



Highland Tank®

PASSIVE GREASE INTERCEPTOR 9,000 GALLON TRIPLE-BASIN

CUSTOMER:

PROJECT:

QUOTE NO.:

DATE: 3/5/19

DATE: 3/5/19

DWG. BY:
MGS

DWG. NO.:
PGI

ORDER

DIMENSION TOLERANCE: $\pm 1'$

NTS

DATE: 3/5/19

DWG. BY:
MGS

DWG. NO.:
PGI

—9000—3