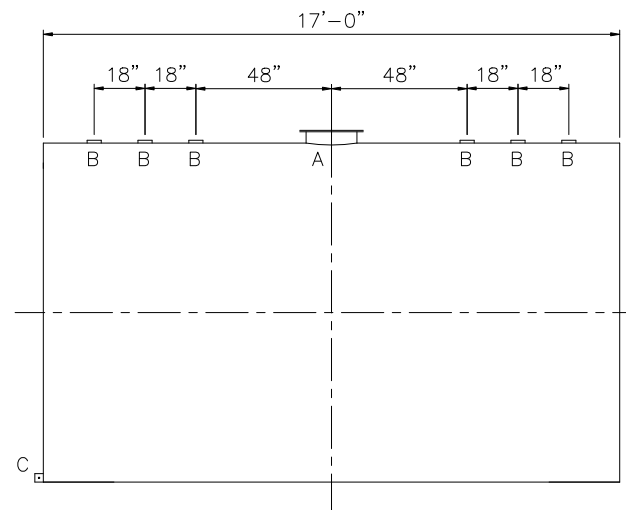



SHIPPING LUGS AS NEEDED

Diagram showing the elevation view of a circular structure. The diameter is dimensioned as $\phi 10'-0''$. The structure is symmetrical about a vertical centerline, which is indicated by a dashed line. A horizontal dashed line represents the ground level. A small rectangular feature is shown at the top center of the structure.



<u>DESIGN DATA</u>
CAPACITY – 10,000 GALLONS
TYPE – SINGLE WALL
NO. REQ. – –
OPERATING PRESSURE – ATMOSPHERIC
SPECIFIC GRAVITY = 1.0
TANK MATERIAL – MILD CARBON STEEL
THICKNESS – HEADS: 5/16"
THICKNESS – SHELL: 1/4"
CONSTRUCTION – LAP WELD OUTSIDE ONLY –
TANK TEST – 5 PSIG –
INT. FINISH – NONE –
EXT. FINISH – SHOP PRIMER –
LABEL – UL 142

LEGEND	
A	18" LOOSE BOLT MANWAY [PRIMARY EMERGENCY VENT]
B	4" FITTING
C	FB-3"x 1/4"x3" WITH 5/8"Ø HOLE ON CL (GROUNDING LUG)
D	—
E	—
F	—

		<h1>Highland Tank</h1>	
UNLESS NOTED, TOLERANCES ARE $\pm 1"$			
10,000 GAL 120"Ø SW AG HORIZONTAL			
CUSTOMER:			
PROJECT:			
QUOTE NO:		CHK'D BY:	
SCALE: 1/4"=1'-0"	DATE:	DWG. BY:	DWG. NO.: 10000AHSW120