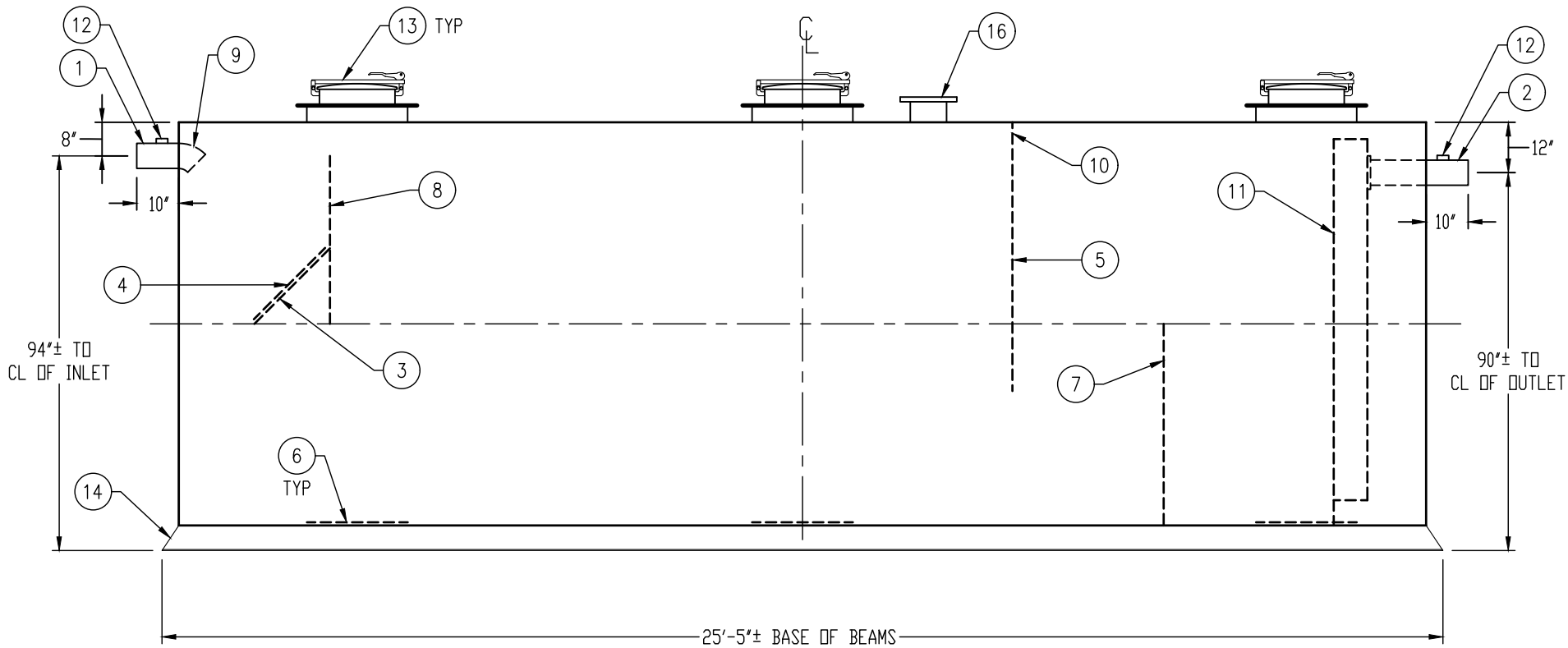
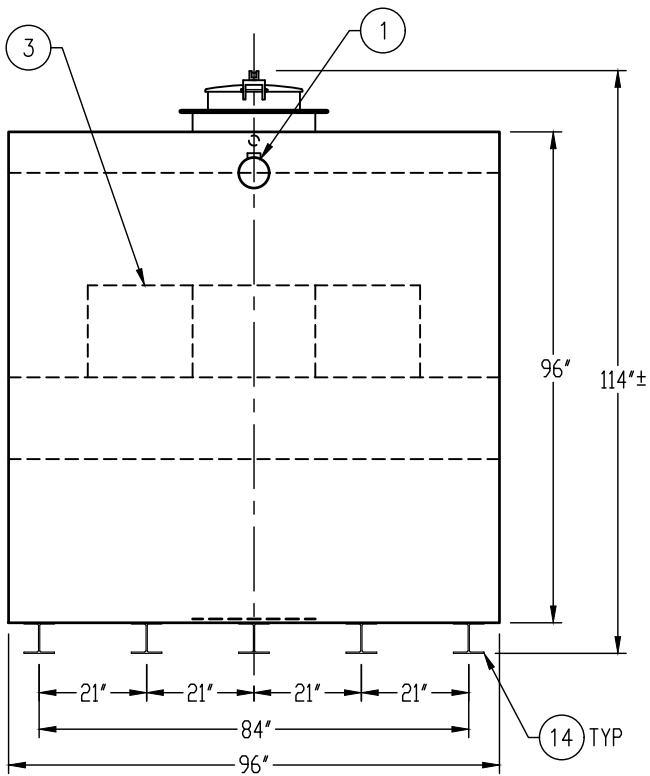
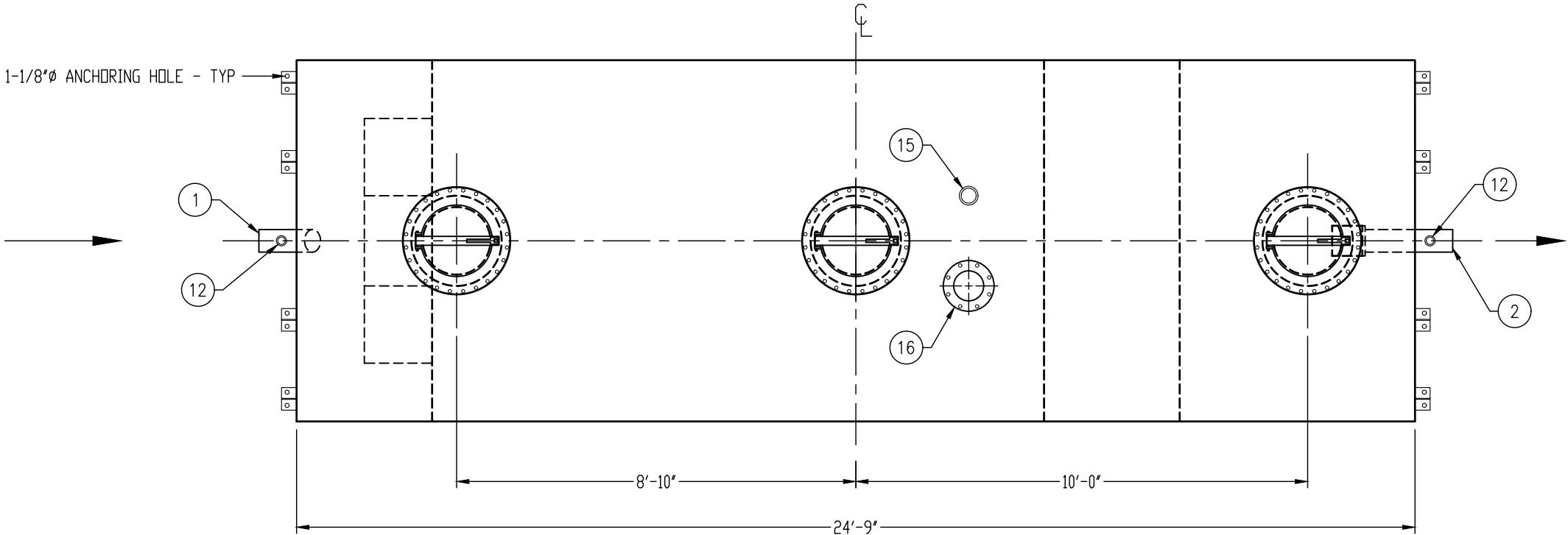


CUSTOMER APPROVAL

THE CUSTOMER HAS REVIEWED THIS DRAWING AND VERIFIED THE ACCURACY OF ALL INFORMATION AND DIMENSIONS.

SIGNED: _____

DATE: _____



GENERAL SPECIFICATIONS

QUANTITY: ONE (1)
MODEL: PGI-10000-2 AR
CAPACITY: 10,000 GALLONS
TYPE: SINGLE WALL, ABOVEGROUND
MATERIAL: 1/4" CARBON STEEL
LAP FIT AND WELD INTERIOR AND EXTERIOR SEAMS
SURFACE PREP: SSPC-SP 10 BLAST INTERIOR SURFACES
SSPC-SP 6 BLAST EXTERIOR SURFACES
EXT. COATING: WHITE URETHANE - 3-5 MILS
INT. COATING: CHEMTHANE 4200 PW (15 MILS DFT)
OPERATING PRESSURE: ATMOSPHERIC
GREASE HOLDING CAPACITY: 25,325 LBS

PROVIDED EQUIPMENT

- 6"Ø SCH 40 PIPE STUB - INLET
- 6"Ø SCH 40 PIPE STUB - OUTLET
- DIFFUSION PLATE - 1/4"
- 24" x 24" WEAR PLATE - 1/4"
- GREASE DAM - 1/4"
- STRIKER PLATE
- SLUDGE BAFFLE - 1/4"
- UNDERFLOW BAFFLE - 1/4"
- 6"Ø 45° DIFFUSION ELBOW
- 2"Ø OPENING FOR AIR CIRCULATION
- STEEL OUTLET DOWNCOMER BAFFLE WITH OPEN TOP
- 2" HC - VENT
- 24"Ø MANWAY WITH 18" EASY-ACCESS HATCH
- (5) W6x15 BEAM RUNNER WITH (2) 1-1/8" HOLES AT EACH TAPERED END FOR ANCHORING
- 4" HC - NORMAL TANK VENT
- 8"Ø-150# FFSO FLANGE FOR EMERGENCY VENT



Highland Tank®

PASSIVE GREASE INTERCEPTOR
10,000 GALLON DOUBLE-BASIN

CUSTOMER:

PROJECT:

QUOTE NO.:

SCALE:

DATE:

DWG. BY:

DWG. NO.:

ORDER:

DIMENSION TOLERANCE: ± 1"

NTS

3/9/20

MGS

PGI-10000-2 AR

NOTE:
ALL RIGHTS RESERVED. THIS DRAWING, OR ANY PART THEREOF, MUST NOT BE REPRODUCED IN ANY FORM WITHOUT WRITTEN PERMISSION FROM HIGHLAND TANK. UNLESS OTHERWISE NOTED, HIGHLAND TANK SHALL BE RESPONSIBLE ONLY FOR ITEMS INDICATED ON THIS FABRICATION DRAWING. THE CUSTOMER IS RESPONSIBLE FOR VERIFYING THE CORRECTNESS OF THE TYPE, SIZE, AND LOCATION OF ALL FITTINGS, ACCESSORIES, AND COATINGS SHOWN ON THIS DRAWING.