

GENERAL SPECIFICATIONS

NO. REQ'D: (1)
CAPACITY: 10,000 GALLONS
TYPE: HT, HIGHGUARD, DOUBLE WALL, "J" SERIES
MATERIAL: MILD CARBON STEEL
FLOW RATE: 1000 GPM

GAUGE: INNER OUTER
SHELL- 1/4" 10 GA.
HEADS- 1/4" 7 GA.

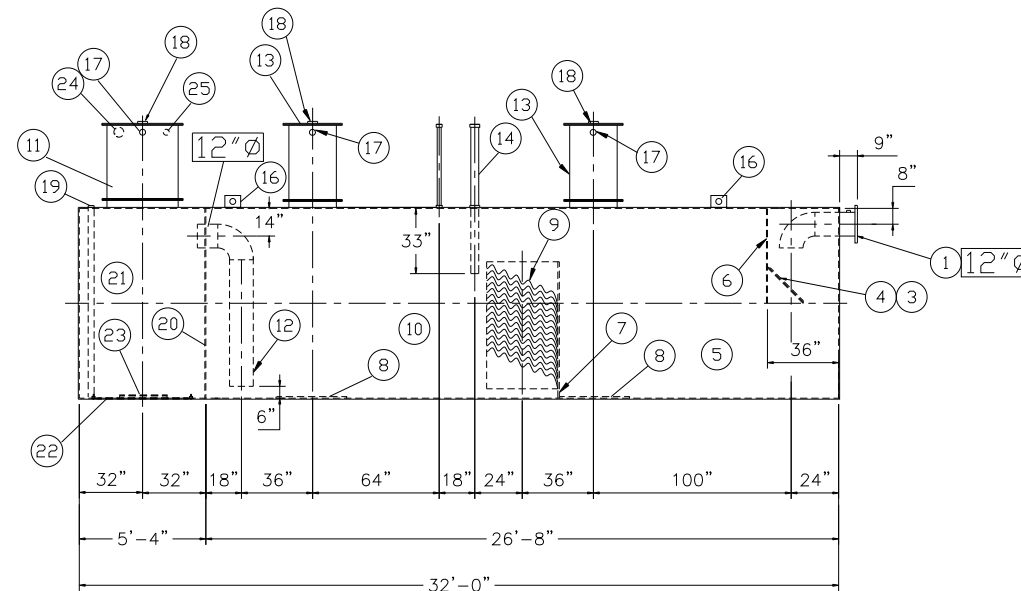
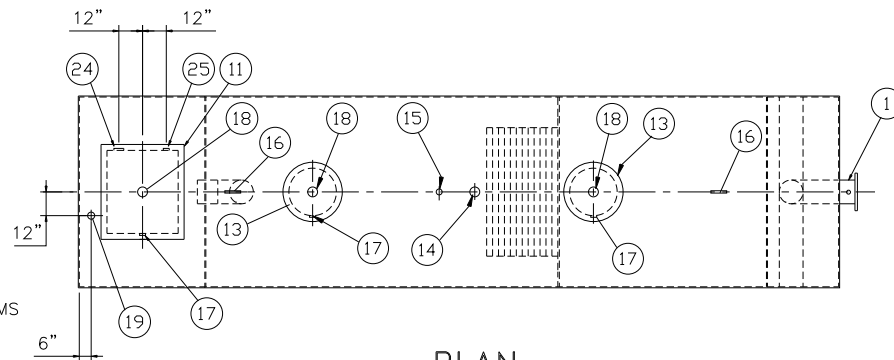
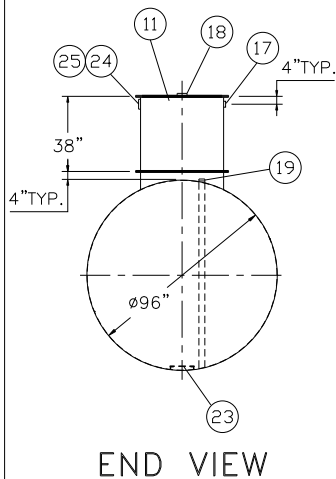
SURFACE PREP:
- SSPC NO.6 BLAST ALL EXTERIOR SURFACES
- SSPC NO.10 BLAST ALL INTERIOR SURFACES
OF WATER CHAMBER ONLY

COATING: MATERIAL THICKNESS
EXTERIOR- HIGHGUARD (75 MILS)
INTERIOR- POLYURETHANE (15 MILS)
INTERIOR OF WATER
CHAMBER ONLY

CONSTRUCTION : LAP FIT AND WELD ALL EXTERIOR SEAMS
OPERATING PRESSURE: ATMOSPHERIC

NOTES:

1. POLYURETHANE HIGHGUARD TANK IS NOT APPROVED FOR THE STORAGE OF HEATED PRODUCTS
2. CUSTOMER TO PROVIDE PUMPING INFORMATION FOR PROPER PUMP SIZING & PUMPOUT DESIGN.
3. 15000 VOLT SPARK TEST PROVIDED AT FACTORY
4. ALL VENT PIPING BY INSTALLER



PROVIDED EQUIPMENT

1. 150# R.F.S.O. FLANGE W/ 2" NPT FOR VENT
3. VELOCITY HEAD DIFFUSION BAFFLE
4. WEAR PLATE
5. SEDIMENT CHAMBER
6. UNDERFLOW BAFFLE
7. SLUDGE BAFFLE
8. STRIKER PLATES
9. PARALLEL CORRUGATED PLATE COALESCER
10. OIL/WATER SEPARATOR CHAMBER
11. RECTANGULAR MANWAY W/ BOLT-ON EXTENSION SHIPPED LOOSE
12. OUTLET DOWNCOMER
13. 24"Ø MANWAY WITH BOLT-ON EXTENSION SHIPPED LOOSE
14. 4"Ø FTG.FOR OIL PUMP-OUT WITH INTERNAL PIPE INSTALLED & RISER PIPE SHIPPED LOOSE
15. 2"Ø FTG. FOR LEVEL SENSOR WITH RISER PIPE SHIPPED LOOSE
16. LIFTING LUG
17. 2"Ø FTG. FOR VENT
18. 4"Ø FTG. FOR GAUGE WITH PLUG
19. 2"Ø FTG. FOR LEAK DETECTION
20. 1/4" BULKHEAD
21. EFFLUENT WATER CHAMBER
22. INTERNAL RIBBON ANODE
23. PUMP MOUNT
24. 4"Ø FTG. FOR PUMP CONDUIT
25. 3"Ø FTG. FOR EFFLUENT WATER CHAMBER LEVEL SENSOR

NOTE :
ALL RIGHTS RESERVED. THIS DRAWING OR ANY PART THEREOF MUST NOT BE REPRODUCED IN ANY FORM WITHOUT THE WRITTEN PERMISSION OF HIGHLAND TANK.
HIGHLAND TANK SHALL BE RESPONSIBLE ONLY FOR ITEMS INDICATED ON THIS FABRICATION DRAWING UNLESS OTHERWISE NOTED. CUSTOMER IS RESPONSIBLE FOR VERIFYING CORRECTNESS OF SIZE / LOCATION OF FITTINGS , ACCESSORIES & COATINGS SHOWN ON THIS DRAWING

REVISIONS			
 Highland Tank U.S. Patent #4,722,800 Canadian Patent # 1,296,263 #6,606,224 # 2,389,065			
10000 GALLON OIL WATER SEPARATOR HT,HIGHGUARD,DOUBLE WALL,"J" SERIES			
CUSTOMER:			
PROJECT:			
QUOTE NO:			CHK'D BY:
SCALE: 3/16"=1'-0"	DATE: 8-5-05	DWG. BY:	DWG. NO.: 10000HGDWHTJ