

GENERAL SPECIFICATIONS

NO. REQ'D: (1)
CAPACITY: 10000 GALLONS
TYPE: UNDERGROUND, DOUBLE WALL, HIGHGUARD
TRIPLE BASIN OIL SAND INTERCEPTOR TANK
MATERIAL: MILD CARBON STEEL
FLOW RATE: 1000 GPM

GAUGE: BASED ON 60" BURIAL

	INNER	OUTER
SHELL-	1/4"	10 GA.
HEADS-	1/4"	7 GA.

SURFACE PREP:
SSPC NO.6 BLAST ALL EXTERIOR SURFACES

COATING:	MATERIAL	THICKNESS
EXTERIOR-	POLYURETHANE	(75 MILS)
INTERIOR-	NONE	

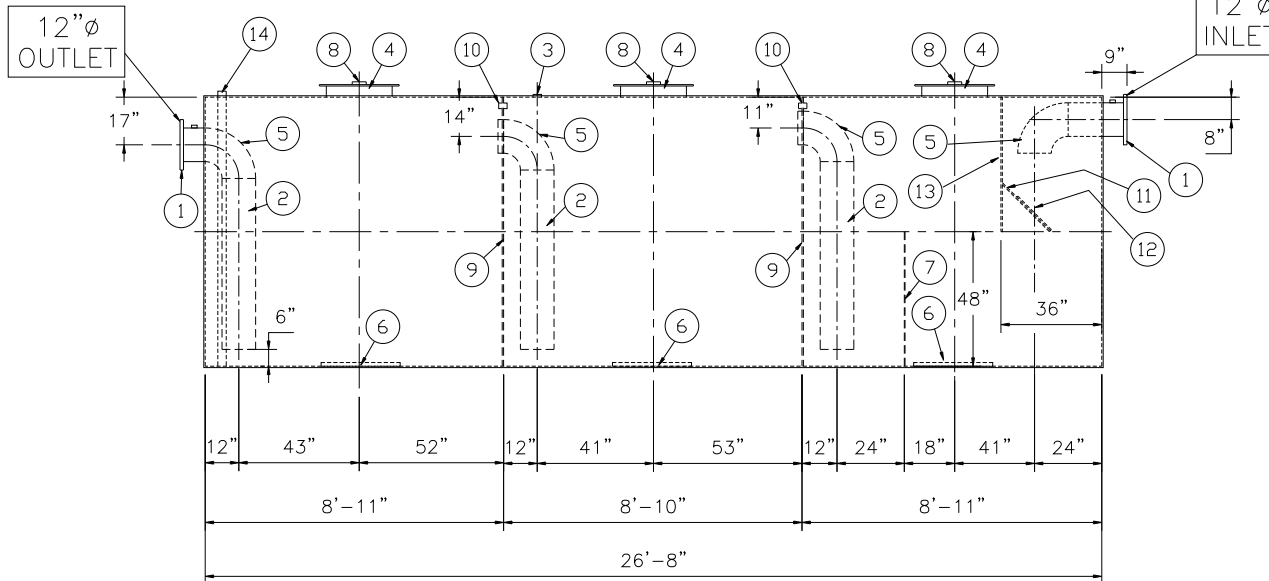
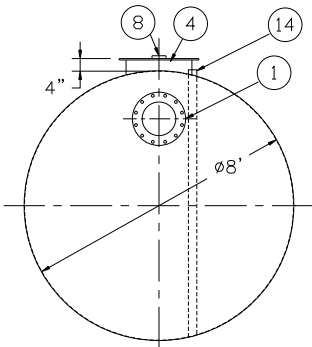
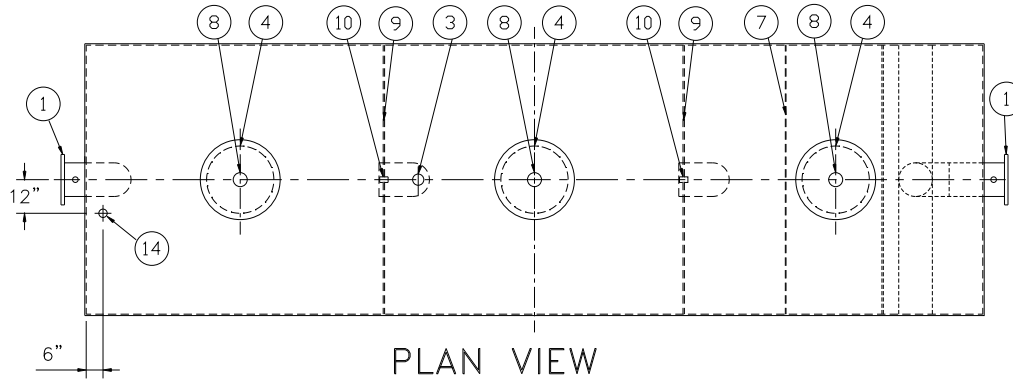
OPERATING PRESSURE: ATMOSPHERIC

NOTES

- POLYURETHANE HIGHGUARD TANK IS NOT APPROVED FOR THE STORAGE OF HEATED PRODUCTS
- ALL VENT PIPING BY INSTALLER
- 15000 VOLT SPARK TEST PROVIDED AT FACTORY

PROVIDED EQUIPMENT

- 150# R.F.S.O. FLANGE W/ 2" ϕ FNPT FTG. FOR VENT
- STEEL DOWNCOMER PIPE
- 2" ϕ FNPT FTG. FOR VENT
- 24" ϕ MANHOLE
- 12" ϕ STEEL ELBOW
- STRIKER PLATES
- SLUDGE BAFFLE
- 4" ϕ FNPT FTG. FOR GAUGE
- 96" ϕ x 7GA. BULKHEAD
- 2" ϕ OPENING IN BULKHEAD FOR VENTING
- VELOCITY HEAD DIFFUSION BAFFLE
- WEAR PLATE
- UNDERFLOW BAFFLE
- 2" ϕ FNPT FTG. W/ STEEL INTERNAL PIPE FOR LEAK DETECTION



NOTE :
ALL RIGHTS RESERVED. THIS DRAWING OR ANY PART THEREOF MUST NOT BE REPRODUCED IN ANY FORM WITHOUT THE WRITTEN PERMISSION OF HIGHLAND TANK.
HIGHLAND TANK SHALL BE RESPONSIBLE ONLY FOR ITEMS INDICATED ON THIS FABRICATION DRAWING UNLESS OTHERWISE NOTED. CUSTOMER IS RESPONSIBLE FOR VERIFYING CORRECTNESS OF SIZE / LOCATION OF FITTINGS , ACCESSORIES & COATINGS SHOWN ON THIS DRAWING

UNLESS OTHERWISE SPECIFIED DIMENSIONS ARE IN INCHES
TOLERANCES ARE + OR - 1"

SCALE:
1/4"=1'-0"

DATE:
8-17-05

DWG. BY:

DWG. NO.:
10000HGDWINTTB

REVISIONS



Highland Tank

10000 GALLON TRIPLE BASIN INTERCEPTOR
DOUBLE WALL, HIGHGUARD

CUSTOMER:

PROJECT:

QUOTE NO:

CHK'D BY: