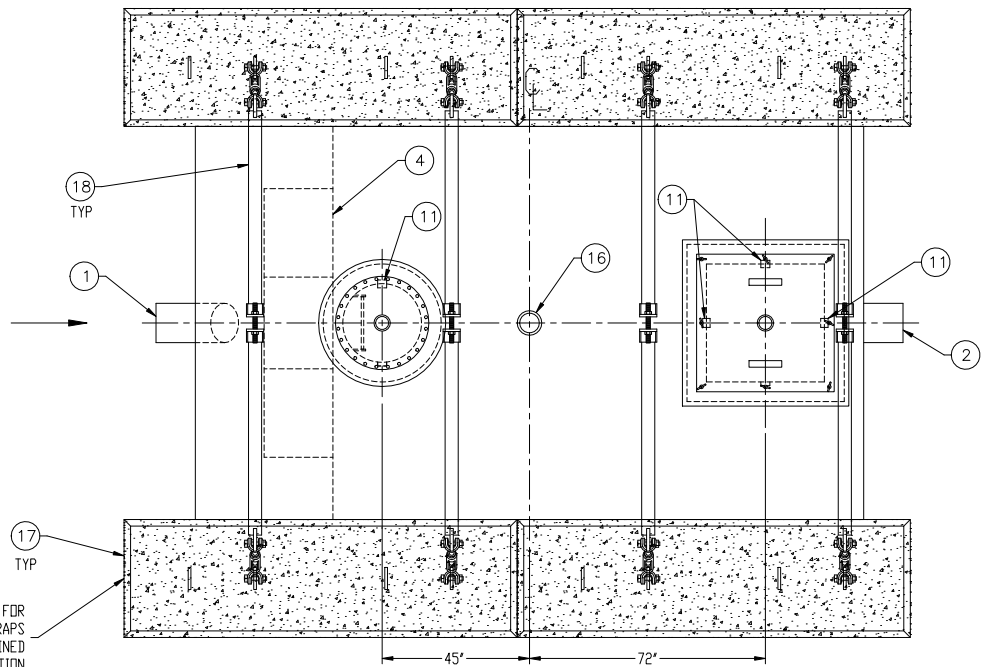
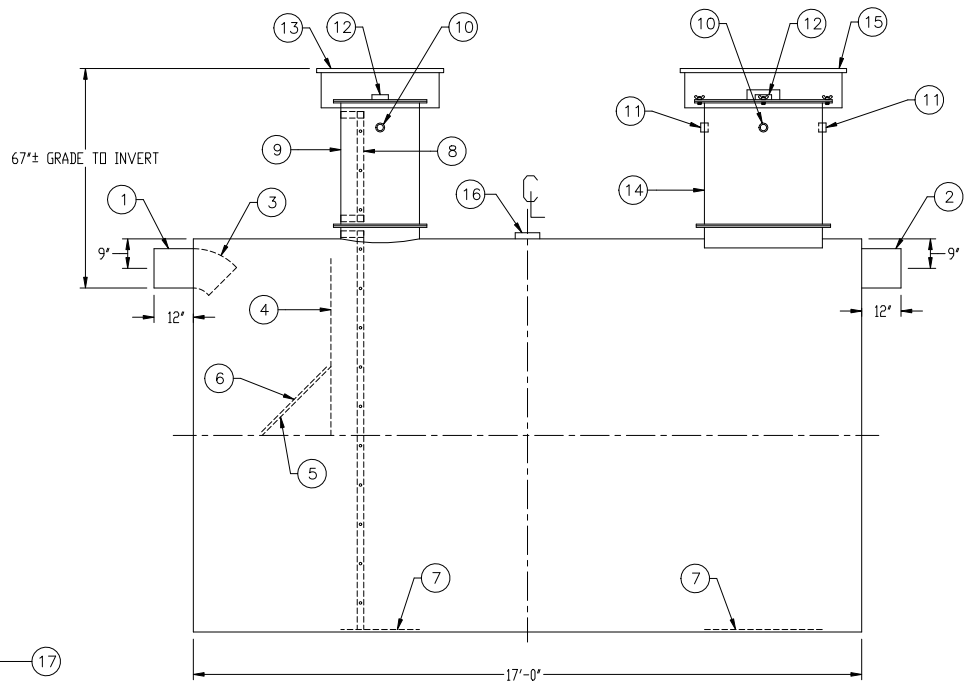
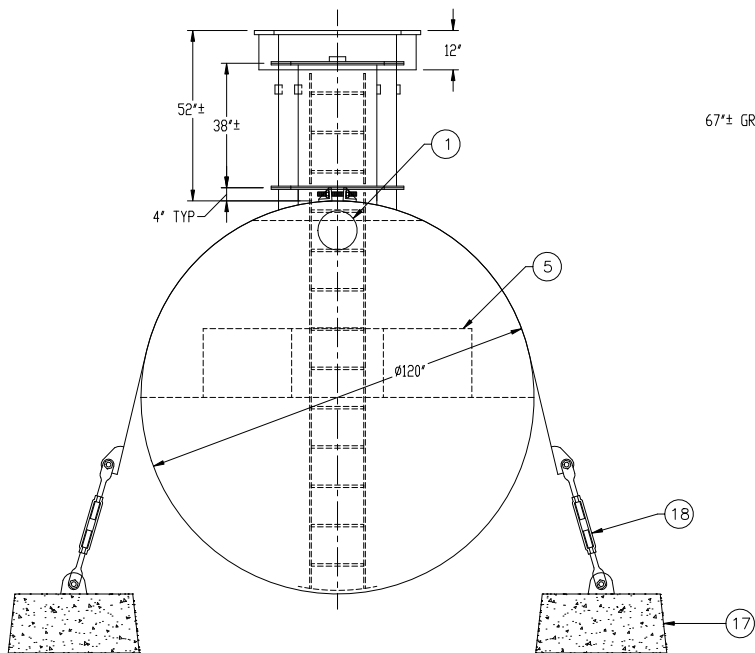


NOTE:  
ALL RIGHTS RESERVED. THIS DRAWING, OR ANY PART THEREOF, MUST NOT  
BE REPRODUCED IN ANY FORM WITHOUT WRITTEN PERMISSION FROM  
HIGHLAND TANK. UNLESS OTHERWISE NOTED, HIGHLAND TANK SHALL BE  
RESPONSIBLE ONLY FOR ITEMS INDICATED ON THIS FABRICATION DRAWING.  
THE CUSTOMER IS RESPONSIBLE FOR VERIFYING THE CORRECTNESS OF  
THE TYPE, SIZE, AND LOCATION OF ALL FITTINGS, ACCESSORIES, AND  
COATINGS SHOWN ON THIS DRAWING.



APPROXIMATE LOCATIONS SHOWN FOR  
DEADMEN & HOLD-DOWN STRAPS  
ACTUAL LOCATIONS TO BE DETERMINED  
AT TIME OF INSTALLATION



## GENERAL SPECIFICATIONS

QUANTITY: ONE (1)  
MODEL: RCT-10000-120  
CAPACITY: 10,000 GALLONS  
TYPE: SINGLE WALL, HIGHGUARD, UNDERGROUND  
MATERIAL: 1/4" CARBON STEEL  
GAUGE OF MATERIAL BASED ON 60" MAX. BURIAL DEPTH  
LAP FIT AND WELD INTERIOR AND EXTERIOR SEAMS  
TANK TEST: 3-5 PSI AIR TEST  
SURFACE PREP: SSPC-SP 10 BLAST INTERIOR SURFACES  
SSPC-SP 6 BLAST EXTERIOR SURFACES  
COATING, EXTERIOR: HIGHGUARD POLYURETHANE-75 MILS  
COATING, INTERIOR:  
HighDRO®- LINER PLUS POLYURETHANE - 15 MILS  
OPERATING PRESSURE: ATMOSPHERIC

## PROVIDED EQUIPMENT

- 12"Ø SCH 40 PIPE STUB - INLET
- 12"Ø SCH 40 PIPE STUB - OVERFLOW
- 12"Ø 45° DIFFUSION ELBOW
- UNDERFLOW BAFFLE - 1/4"
- DIFFUSION PLATE - 1/4"
- 28" x 28" WEAR PLATE - 1/4"
- STRIKER PLATE
- STAINLESS STEEL LADDER - 16" WIDE
- 24"Ø MANWAY WITH BOLT-ON RISER
- 2" HC - VENT
- 2" FC FOR WIRING
- 4" HC GAUGE FTG
- 36"Ø GRADE-LEVEL MANWAY - SHIPPED LOOSE
- 36" x 36" MANWAY WITH BOLT-ON EXTENSION
- 48" x 48" GRADE-LEVEL MANWAY - SHIPPED LOOSE
- 6" HC TANK VENT
- (4) CDA-45 CONCRETE DEADMAN
- (4) 10'-0" STEEL SAFETY DEADMAN HOLD-DOWN STRAPS WITH TURNBUCKLES AND LINERS

THIS DRAWING IS SUBJECT TO CHANGE AT THE DISCRETION  
OF THE MANUFACTURER. CONTACT HIGHLAND TANK FOR  
THE MOST UP-TO-DATE INFORMATION AND DRAWINGS OF  
OUR PRODUCTS.



**Highland Tank®**

HighDRO®-PURE RAINWATER HARVESTING SYSTEM  
10,000 GALLON CISTERN TANK

CUSTOMER:

PROJECT:

QUOTE NO:

SCALE: DATE: 1/24/17

DWG. BY: MGS

ORDER#:

DWG. NO:

RCT-10000-120

DIMENSION TOLERANCE: ± 1"