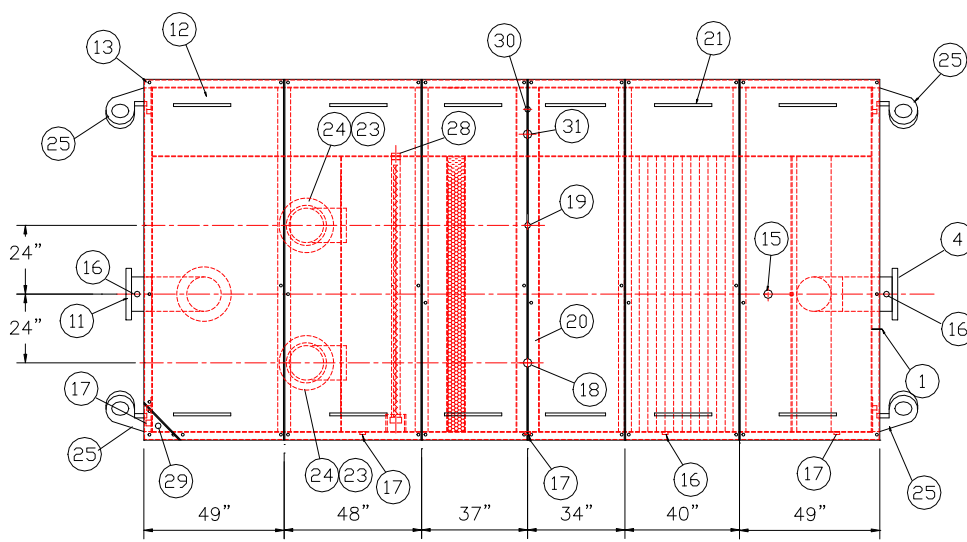


## GENERAL SPECIFICATIONS

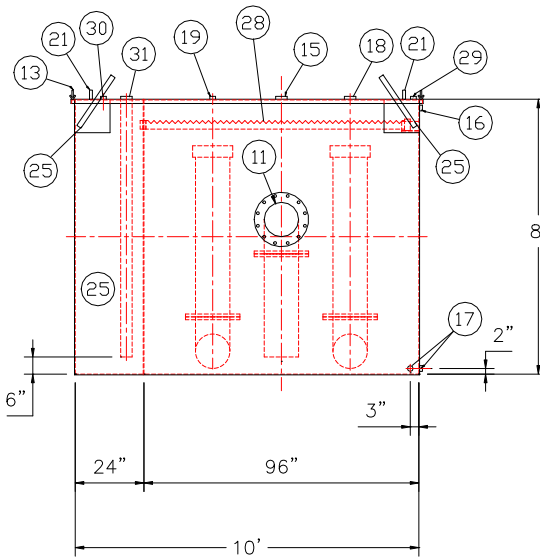
NO. REQ'D: (1)  
CAPACITY: 10000 GALLONS  
TYPE: RECTANGULAR, HTC, ABOVEGROUND, S-SERIES  
MATERIAL: MILD CARBON STEEL  
FLOW RATE: 1000 GPM  
GAUGE: 1/4" THROUGHOUT  
SURFACE PREP:  
SSPC NO.10 BLAST ALL INTERIOR SURFACES  
SSPC NO.6 BLAST ALL EXTERIOR SURFACES  
COATING: MATERIAL THICKNESS  
EXTERIOR- CHEMPRIME 3001 (3-6 MILS)  
CHEMLINE 3300 (2-3 MILS)  
TOP COAT "WHITE"  
INTERIOR- CHEMLINE 4200 PW (15 MILS)  
CONSTRUCTION:  
BUTT FIT AND WELD ALL CORNERS IN & OUT

### NOTES

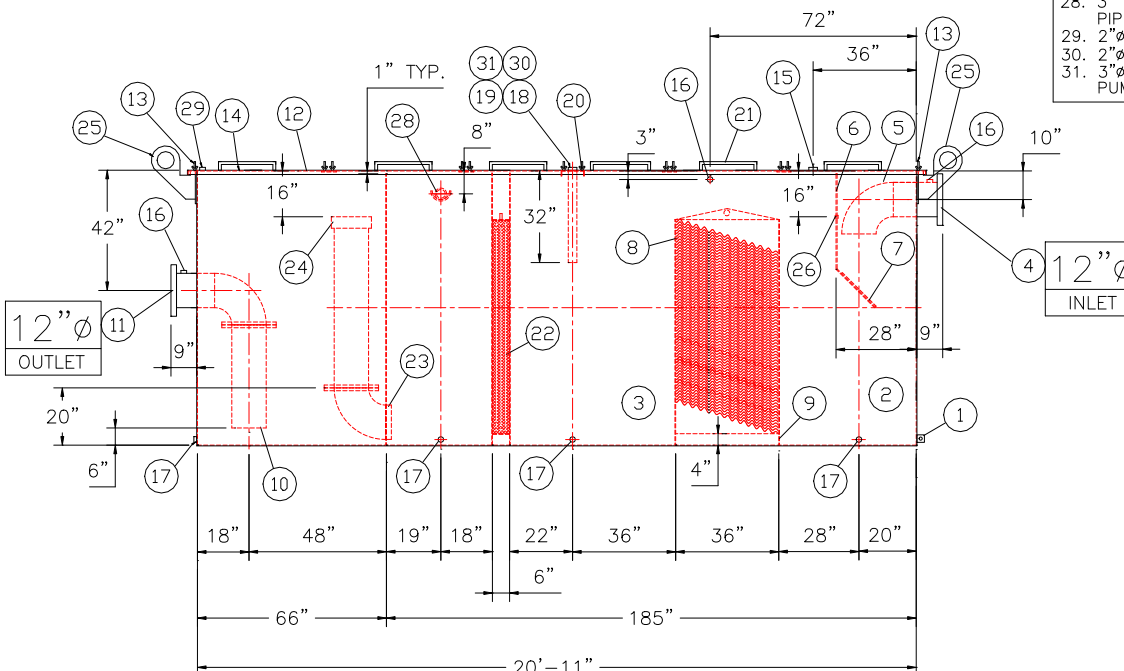
1. ALL INTERNAL MATERIAL IS 10 GA
2. ALL THREADED DRAIN FITTINGS TO HAVE STEEL THREADED PLUGS AND COATED WITH TANK
3. ALL OTHER THREADED FITTINGS TO HAVE PVC THREADED PLUGS
4. LIFTING LUGS HAVE REINFORCING PLATES



REMOVABLE COVERS (6) REQUIRED  
PLAN VIEW



END VIEW



ELEVATION

- ### REQUIRED EQUIPMENT
1. 3"x3"x1/4" FLAT W/ 9/16"Ø HOLE DRILLED IN CENTER (GROUNDING LUG)
  2. SEDIMENT CHAMBER
  3. OIL WATER SEPARATOR CHAMBER
  4. 150# RFSG FLANGED INLET
  5. STEEL INLET ELBOW PIPING
  6. VELOCITY HEAD DIFFUSION BAFFLE 10GA
  7. WEAR PLATE (1/4" MATERIAL)
  8. REMOVABLE PARALLEL CORRUGATED PLATE COALESCER (CORELLA PVC PLATES) 1" PLATE SPACING
  9. SLUDGE BAFFLE - 10GA
  10. FLANGED PVC OUTLET DOWNCOMER PIPE
  11. 150# RFSG FLANGED OUTLET W/ INTERNAL STEEL ELBOW AND FLANGE
  12. (6) PIECE COVER W/ 5/8" BOLT HOLES - 7 GA
  13. NUTS & BOLTS W/ LARGE WING (CORROSION RESISTANT)
  14. GASKET MATERIAL (FOR EACH REMOVABLE COVER)
  15. 3"Ø FNPT (CLEAN-OUT)
  16. 2"Ø FNPT (VENT)
  17. 2"Ø FNPT (DRAIN)
  18. 3"Ø FNPT FULL COUPLING WITH 3" INTERNAL PVC PIPE (OIL PUMP OUT IN SEPARATOR CHAMBER)
  19. 2"Ø FNPT (SEPARATOR CHAMBER INTERFACE LEVEL SENSOR)
  20. 7GA. CROSSMEMBER FOR OIL PUMP-OUT & LEVEL SENSOR FITTINGS IN SEPARATOR AND OIL HOLDING CHAMBERS
  21. HANDLES PER H.T. STANDARD
  22. 6" THICK REMOVABLE PETROSCREEN CARTRIDGE COALESCER
  23. 12"Ø STEEL ELBOW W/ FLANGE WELDED TO TOP FOR PVC RISER PIPES
  24. 12"Ø ADJUSTABLE FERNCO COUPLING
  25. 3/4" THICK LIFTING LUG ANGLED TOWARD CENTER
  26. 1"Ø FNPT COUPLING W/ PLUG
  27. OIL HOLDING COMPARTMENT
  28. 3" FNPT COUPLING WITH SAWTOOTH TYPE PVC OIL SKIMMER & PIPE SUPPORT SHELF
  29. 2"Ø FNPT HALF COUPLING (SPARE)
  30. 2"Ø FNPT (HIGH LEVEL OIL HOLDING CHAMBER LEVEL SENSOR)
  31. 3"Ø FNPT FULL COUPLING WITH 3" INTERNAL PVC PIPE (OIL PUMP OUT IN OIL HOLDING CHAMBER)

### REVISIONS



# Highland Tank

U.S. Patent #4,722,800 Canadian Patent # 1,296,263

10000 GALLON OIL WATER SEPARATOR  
RECTANGULAR, HTC, S-SERIES

CUSTOMER:

PROJECT:

QUOTE NO:

CHK'D BY:

SCALE:

DATE:

DWG. BY:

DWG. NO.:

1/4"=1'-0"

10000RECSWHTCS

NOTE:  
ALL RIGHTS RESERVED. THIS DRAWING OR ANY PART THEREOF MUST NOT BE REPRODUCED IN ANY FORM WITHOUT THE WRITTEN PERMISSION OF HIGHLAND TANK.  
HIGHLAND TANK SHALL BE RESPONSIBLE ONLY FOR ITEMS INDICATED ON THIS FABRICATION DRAWING UNLESS OTHERWISE NOTED. CUSTOMER IS RESPONSIBLE FOR VERIFYING CORRECTNESS OF SIZE / LOCATION OF FITTINGS, ACCESSORIES & COATINGS SHOWN ON THIS DRAWING

GENERAL SPECIFICATIONS

NO. REQ'D: (1)  
CAPACITY: 10000 GALLONS  
TYPE: RECTANGULAR, HTC, ABOVEGROUND, S-SERIES  
MATERIAL: MILD CARBON STEEL  
FLOW RATE: 1000 GPM  
GAUGE: 1/4" THROUGHOUT  
SURFACE PREP:  
SSPC NO.10 BLAST ALL INTERIOR SURFACES  
SSPC NO.6 BLAST ALL EXTERIOR SURFACES

COATING:	MATERIAL	THICKNESS
EXTERIOR-	CHEMPRIME 3001	(3-6 MILS)
	CHEMLINE 3300 TOP COAT "WHITE"	(2-3 MILS)
INTERIOR-	CHEMLINE 4200 PW	(15 MILS)

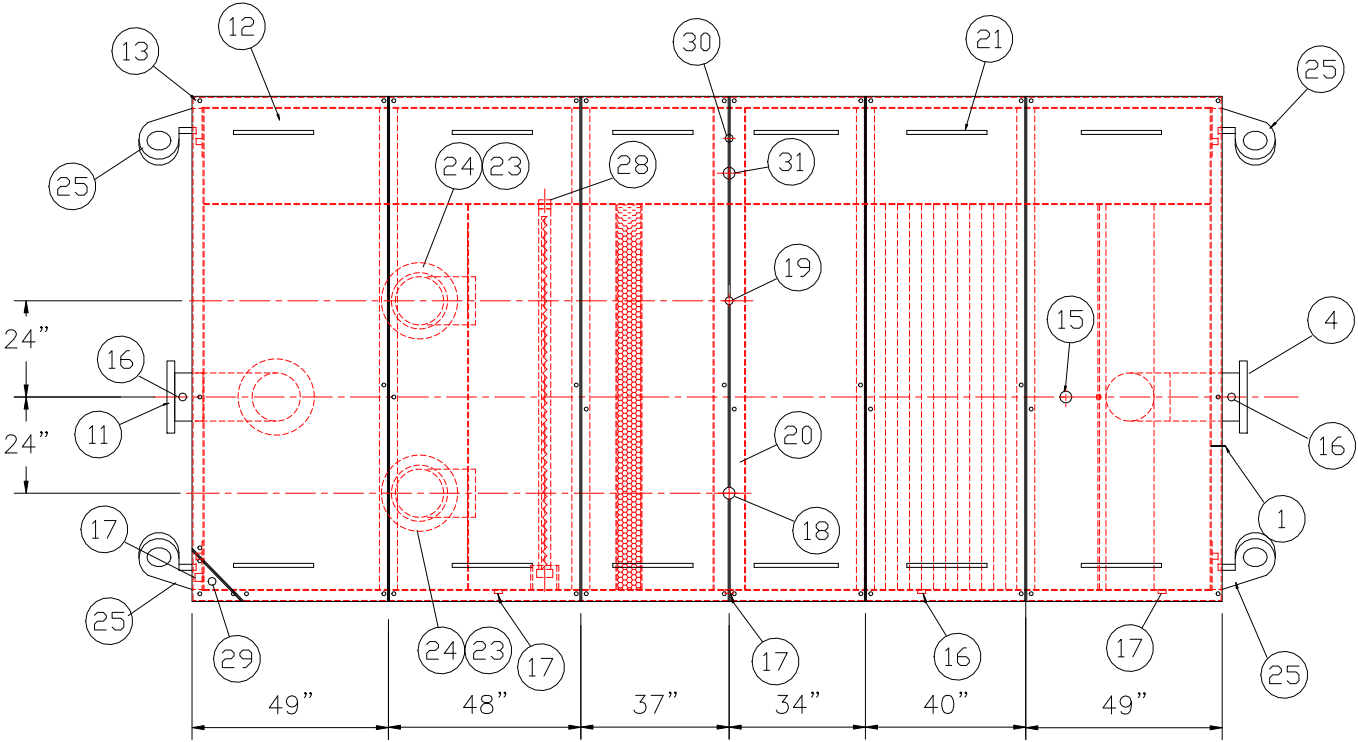
CONSTRUCTION:  
BUTT FIT AND WELD ALL CORNERS IN & OUT

NOTES

1. ALL INTERNAL MATERIAL IS 10 GA  
2. ALL THREADED DRAIN FITTINGS TO HAVE STEEL THREADED PLUGS AND COATED WITH TANK  
3. ALL OTHER THREADED FITTINGS TO HAVE PVC THREADED PLUGS  
4. LIFTING LUGS HAVE REINFORCING PLATES

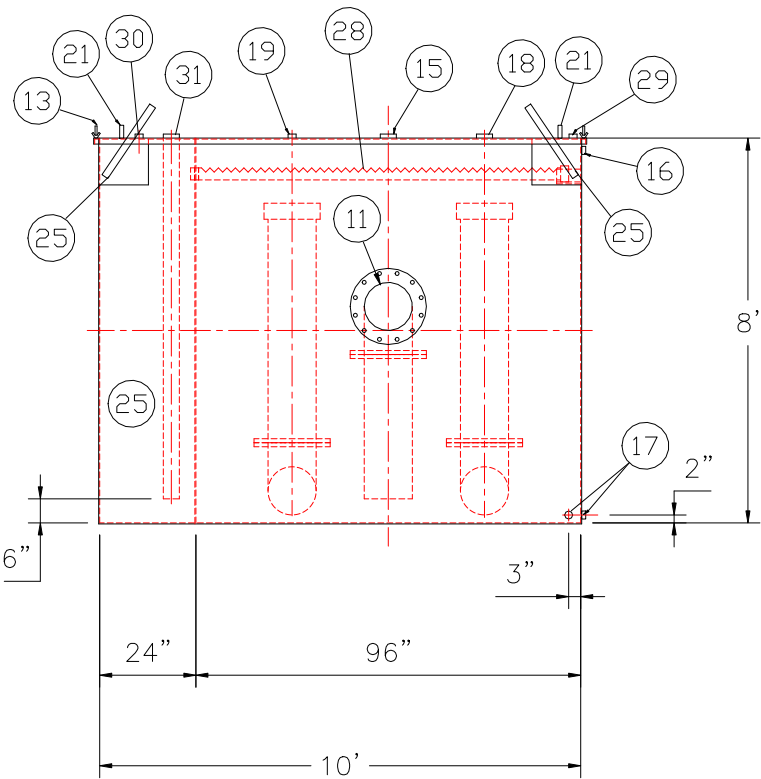
PROVIDED EQUIPMENT

1. 3"x3"x1/4" FLAT W/ 9/16"Ø HOLE DRILLED IN CENTER (GROUNDING LUG)  
2. SEDIMENT CHAMBER  
3. OIL WATER SEPARATOR CHAMBER  
4. 150# RFSO FLANGED INLET  
5. STEEL INLET ELBOW PIPING  
6. VELOCITY HEAD DIFFUSION BAFFLE 10GA  
7. WEAR PLATE (1/4" MATERIAL)  
8. REMOVABLE PARALLEL CORRUGATED PLATE COALESCER (CORELLA PVC PLATES) 1" PLATE SPACING  
9. SLUDGE BAFFLE - 10GA  
10. FLANGED PVC OUTLET DOWNCOMER PIPE  
11. 150# RFSO FLANGED OUTLET W/ INTERNAL STEEL ELBOW AND FLANGE  
12. (6) PIECE COVER W/ 5/8" BOLT HOLES - 7 GA  
13. NUTS & BOLTS W/ LARGE WING (CORROSION RESISTANT)  
14. GASKET MATERIAL (FOR EACH REMOVABLE COVER)  
15. 3"Ø FNPT (CLEAN-OUT)  
16. 2"Ø FNPT (VENT)  
17. 2"Ø FNPT (DRAIN)  
18. 3"Ø FNPT FULL COUPLING WITH 3" INTERNAL PVC PIPE (OIL PUMP OUT IN SEPERATOR CHAMBER)  
19. 2"Ø FNPT (SEPARATOR CHAMBER INTERFACE LEVEL SENSOR)  
20. 7GA. CROSSMEMBER FOR OIL PUMP-OUT & LEVEL SENSOR FITTINGS IN SEPARATOR AND OIL HOLDING CHAMBERS  
21. HANDLES PER H.T. STANDARD  
22. 6" THICK REMOVABLE PETROSCREEN CARTRIDGE COALESCER  
23. 12"Ø STEEL ELBOW W/ FLANGE WELDED TO TOP FOR PVC RISER PIPES  
24. 12"Ø ADJUSTABLE FERNCO COUPLING  
25. 3/4" THICK LIFTING LUG ANGLED TOWARD CENTER  
26. 1"Ø FNPT COUPLING W/ PLUG  
27. OIL HOLDING COMPARTMENT  
28. 3" FNPT COUPLING WITH SAWTOOTH TYPE PVC OIL SKIMMER & PIPE SUPPORT SHELF  
29. 2"Ø FNPT HALF COUPLING (SPARE)  
30. 2"Ø FNPT (HIGH LEVEL OIL HOLDING CHAMBER LEVEL SENSOR)  
31. 3"Ø FNPT FULL COUPLING WITH 3" INTERNAL PVC PIPE (OIL PUMP OUT IN OIL HOLDING CHAMBER)

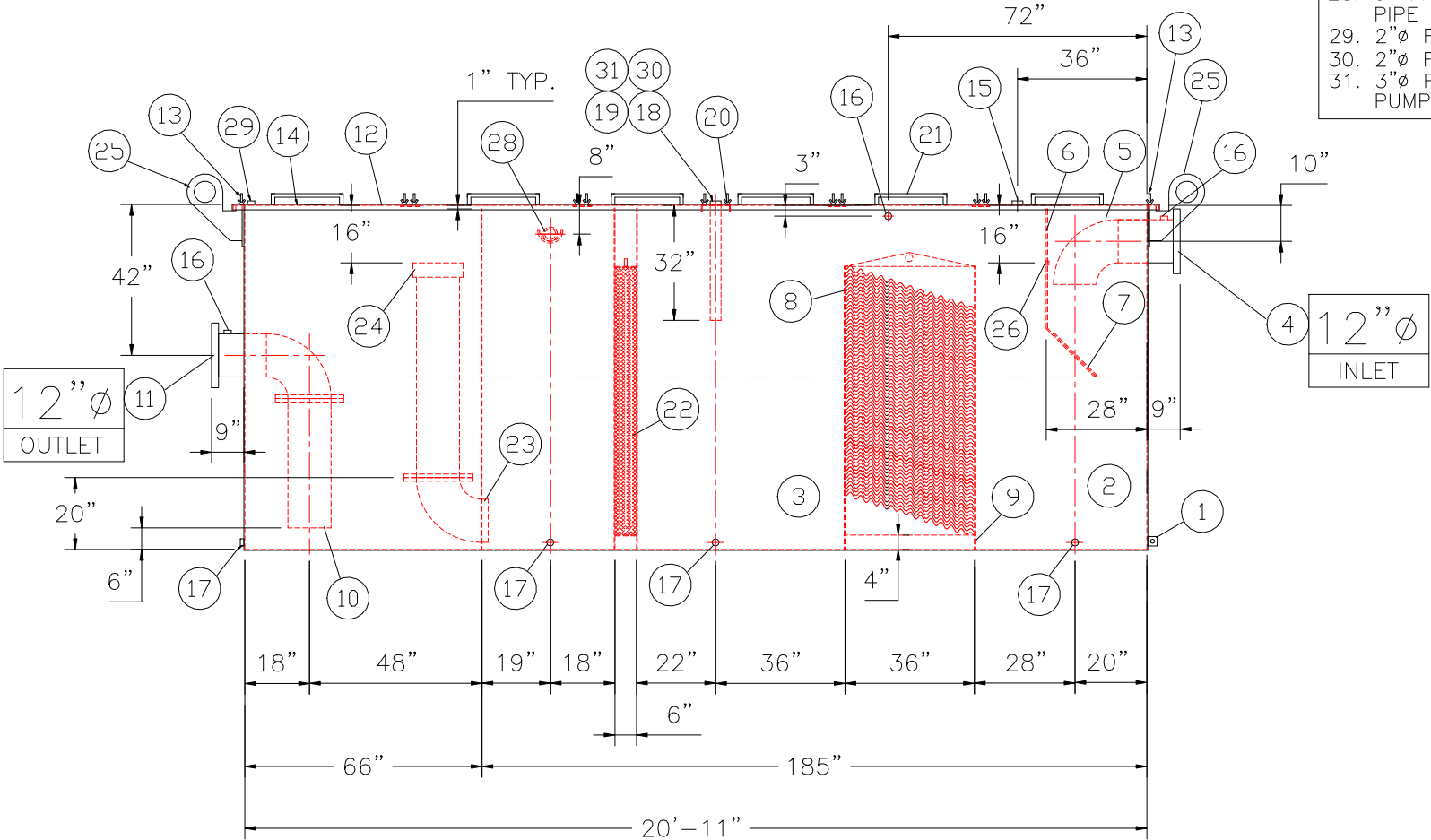


REMOVABLE COVERS (6) REQUIRED

PLAN VIEW



END VIEW



ELEVATION

NOTE :  
ALL RIGHTS RESERVED. THIS DRAWING OR ANY PART THEREOF MUST NOT BE REPRODUCED IN ANY FORM WITHOUT THE WRITTEN PERMISSION OF HIGHLAND TANK.  
HIGHLAND TANK SHALL BE RESPONSIBLE ONLY FOR ITEMS INDICATED ON THIS FABRICATION DRAWING UNLESS OTHERWISE NOTED. CUSTOMER IS RESPONSIBLE FOR VERIFYING CORRECTNESS OF SIZE / LOCATION OF FITTINGS , ACCESSORIES & COATINGS SHOWN ON THIS DRAWING

REVISIONS



**Highland Tank**

U.S. Patent #4,722,800 Canadian Patent # 1,296,263

10000 GALLON OIL WATER SEPARATOR  
RECTANGULAR, HTC, S-SERIES

CUSTOMER:

PROJECT:

QUOTE NO:

CHK'D BY:

SCALE: 1/4"=1'-0"

DATE:

DWG. BY:

DWG. NO.:

10000RECSWHTCS