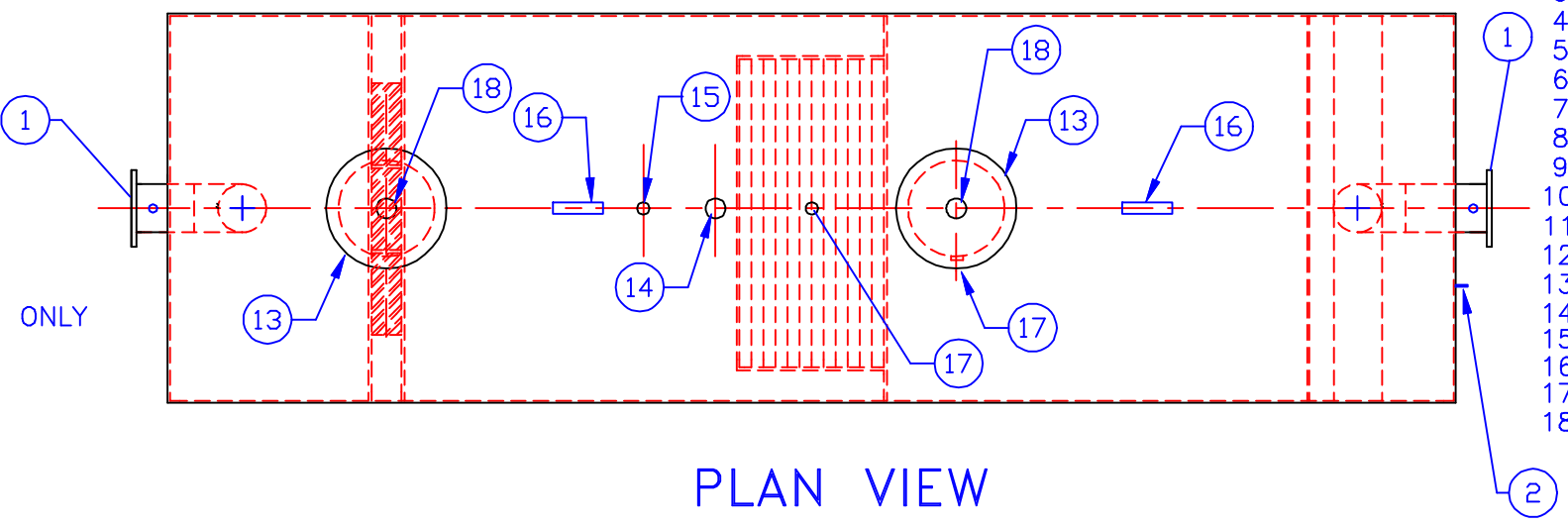


GENERAL SPECIFICATIONS

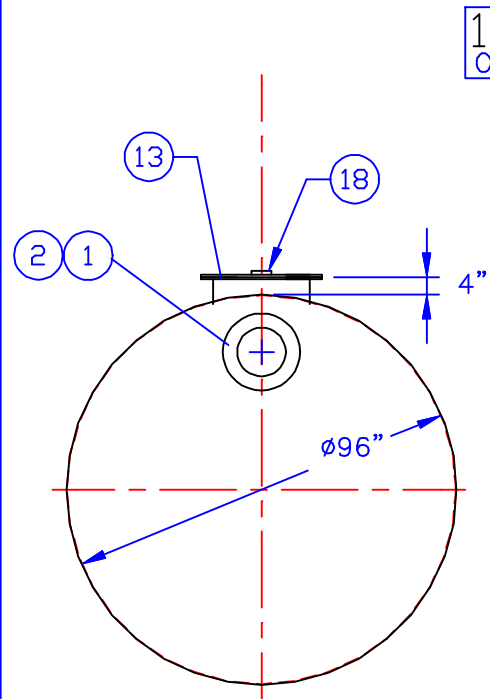
NO. REQ'D: (1)
CAPACITY: 10,000 GALLONS
TYPE: SINGLE WALL, ABOVEGROUND, HTC
MATERIAL: MILD CARBON STEEL
FLOW RATE: 1000 GPM
GAUGE:
SHELL- 1/4"
HEADS- 5/16"
COATING:
EXTERIOR-
INTERIOR-
CONSTRUCTION:
LAP FIT & WELD ALL EXTERIOR SEAMS ONLY
MATERIAL
RED PRIMER
NONE

PROVIDED EQUIPMENT

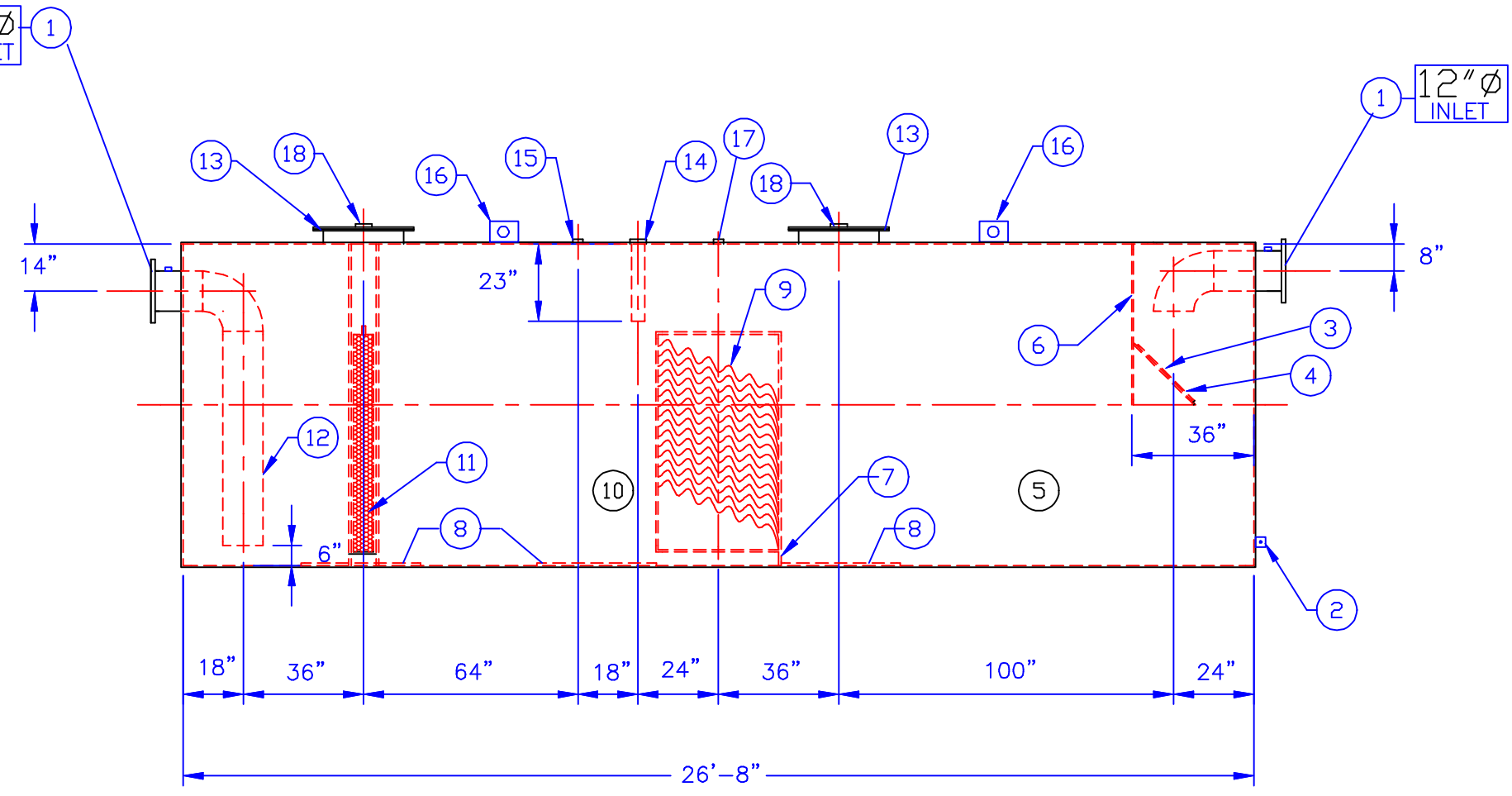
- 1. 150# R.F.S.O. FLANGE W/ 2" NPT FOR VENT
- 2. 3" x 3" x 1/4" GROUNDING LUG W/ 5/8" HOLE IN CENTER
- 3. VELOCITY HEAD DIFFUSION BAFFLE
- 4. WEAR PLATE
- 5. SEDIMENT CHAMBER
- 6. UNDERFLOW BAFFLE
- 7. SLUDGE BAFFLE
- 8. STRIKER PLATES
- 9. PARALLEL CORRUGATED PLATE COALESCER
- 10. OIL/WATER SEPARATOR CHAMBER
- 11. 6" THICK COALESCER MATERIAL
- 12. OUTLET DOWNCOMER
- 13. 24"Ø MANWAY
- 14. 4"Ø FTG.FOR OIL PUMP-OUT W/ INTERNAL PIPE INSTALLED
- 15. 2"Ø FTG. FOR LEVEL SENSOR
- 16. LIFTING LUG
- 17. 2"Ø FTG. FOR VENT
- 18. 4"Ø FTG. FOR GAUGE WITH PLUG, TYP. BOTH MANWAYS



PLAN VIEW



END VIEW



ELEVATION

NOTE :
ALL RIGHTS RESERVED. THIS DRAWING OR ANY PART THEREOF MUST NOT BE REPRODUCED IN ANY FORM WITHOUT THE WRITTEN PERMISSION OF HIGHLAND TANK.
HIGHLAND TANK SHALL BE RESPONSIBLE ONLY FOR ITEMS INDICATED ON THIS FABRICATION DRAWING UNLESS OTHERWISE NOTED. CUSTOMER IS RESPONSIBLE FOR VERIFYING CORRECTNESS OF SIZE / LOCATION OF FITTINGS , ACCESSORIES & COATINGS SHOWN ON THIS DRAWING

REVISIONS			
		Highland Tank	
10000 GALLON OIL WATER SEPARATOR HTC, ABOVEGROUND, SINGLE WALL			
CUSTOMER:			
PROJECT:			
QUOTE NO:		CHK'D BY:	
SCALE: 1/4"=1'-0"	DATE:	DWG. BY:	DWG. NO.: 10KHTCSWAH