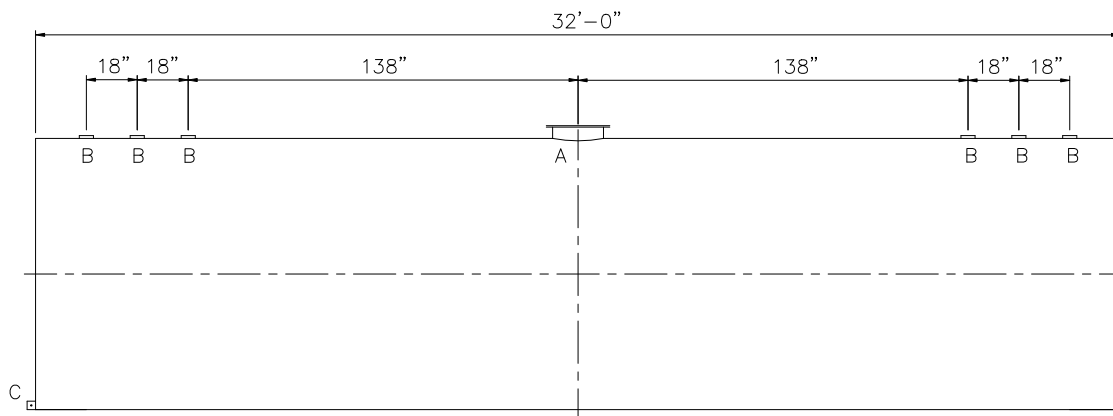


SHIPPING LUGS AS NEEDED

Technical drawing of a circle with a diameter dimension of $\phi 8'-0''$. The dimension is indicated by a line with arrows pointing to the circle's circumference, labeled with the text $\phi 8'-0''$. A vertical dashed line passes through the center of the circle, and a horizontal dashed line also passes through the center, intersecting at the origin. A small rectangular feature is shown at the top of the circle, centered on the vertical dashed line.



<u>DESIGN DATA</u>
CAPACITY -12,000 GALLONS
TYPE - SINGLE WALL
NO. REQ. - -
OPERATING PRESSURE -ATMOSPHERIC
SPECIFIC GRAVITY = 1.0
TANK MATERIAL - MILD CARBON STEEL
THICKNESS - HEADS: 5/16"
THICKNESS - SHELL: 1/4"
CONSTRUCTION -LAP WELD OUTSIDE ONLY
-
TANK TEST -5 PSIG
-
INT. FINISH - NONE
-
EXT. FINISH -SHOP PRIMER
-
LABEL - UL 142

LEGEND	
A	18" LOOSE BOLT MANWAY [PRIMARY EMERGENCY VENT]
B	4" FITTING
C	FB-3"x 1/4"x3" WITH 5/8"Ø HOLE ON CL (GROUNDING LUG)
D	—
E	—
F	—

 <h1>Highland Tank</h1>	
UNLESS NOTED, TOLERANCES ARE $\pm .1"$	
12,000 GAL 96" \varnothing SW AG HORIZONTAL	
CUSTOMER:	
PROJECT:	
QUOTE NO:	CHK'D BY:
SCALE: 1/4"=1'-0"	DWG. NO. 12000AHWSW96
DATE:	DWG. BY: