

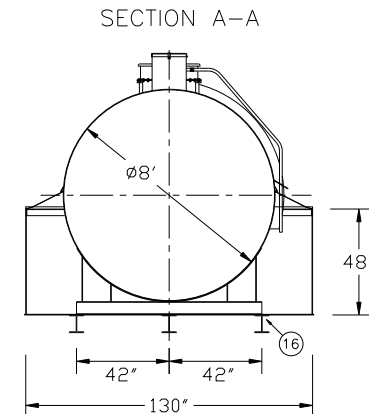
AUTHORIZATION

\_\_\_\_\_  
COMPANY NAME

\_\_\_\_\_  
APPROVED BY (PLEASE PRINT)

\_\_\_\_\_  
APPROVAL SIGNATURE

DATE \_\_\_\_\_ CONTRACT NO. \_\_\_\_\_



ITEM	DESCRIPTION
①	3" NORMAL VENT FITTING
②	8"-8 OZ. EMERGENCY VENT - SHIPPED LOOSE
③	VENT DEFLECTOR ASSEMBLY - SHIPPED LOOSE
④	4" FITTING
⑤	3" FITTING
⑥	3" FCPLG
⑦	1" OVERFLOW PIPE - SHIPPED LOOSE
⑧	1" PIPE UNION
⑨	4" FILL FITTING
⑩	FILL CONTAINMENT CHAMBER
⑪	DRIP PAN PLATFORM WITH 2" LIP
⑫	1/2" DRAIN FITTING
⑬	STAIRS, PLATFORM AND HANDRAIL-SHIPPED LOOSE
⑭	3/4" PUMPOUT PIPE
⑮	3" PIPE CAP SUMP
⑯	8" WF (3)

NOTES	
1.	PRIMARY TANK: SHELL - 1/4" HEAD - 5/16" CONTAINMENT: 1/4"
2.	MATERIAL - MILD CARBON STEEL
3.	TEST AT 5-7 PSIG.
4.	ENTIRE UNIT UL LISTED.
5.	EXTERIOR FINISH -
6.	INTERIOR LINING -
7.	ALL DIMENSIONS APPROXIMATE.

All rights reserved. This drawing or any part thereof must not be reproduced in any form without the written permission of Areo-Power Unitized Fueler, Inc.			
<b>AREO-POWER®</b>			
TITLE 12,000 GAL. FUELER		REV #	REV DATE
U.S. PATENT # 4895272	CANADIAN PATENT APPLIED FOR		
SCALE 3/16"=1'	DATE 05/12/03	DRAWN BY 001	DWG. NO. APB685