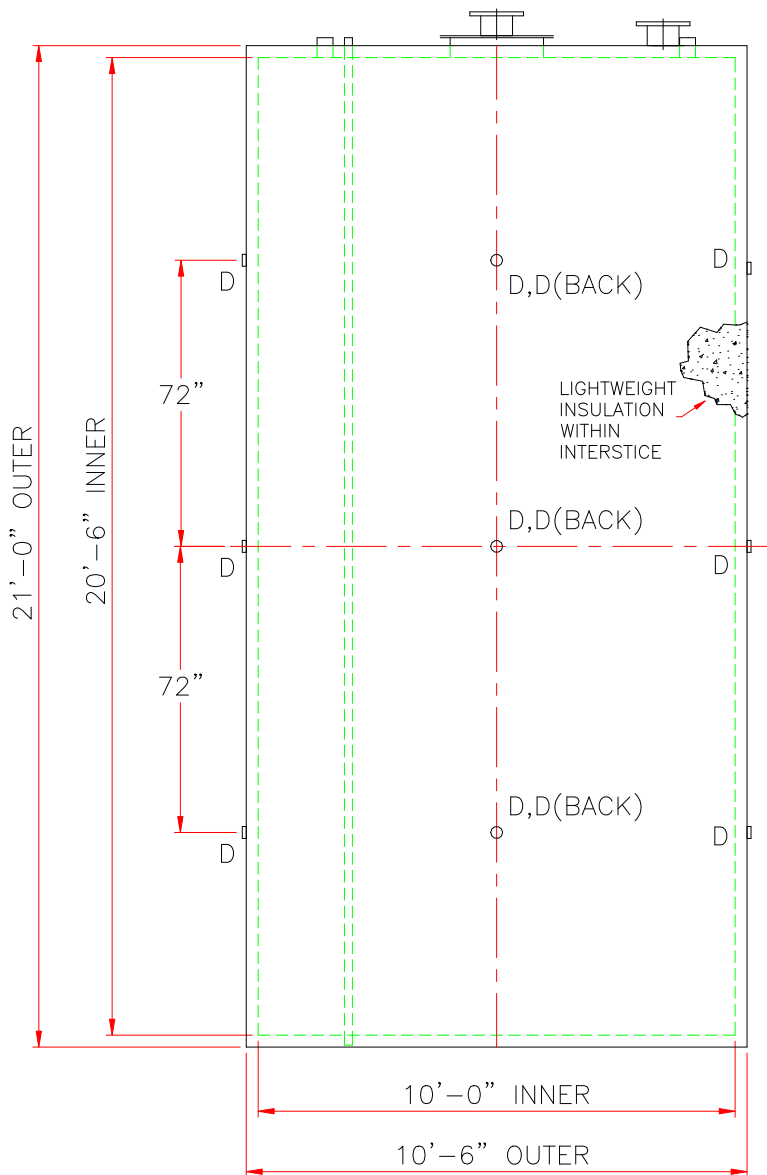


TOUCH UP OF FINISHED PAINT IS
REQUIRED BY INSTALLATION
CONTRACTOR. TOUCH UP PAINT SHIPPED
WITH TANK.

1. SEE PLAN VIEW FOR TRUE ORIENTATION AND LOCATION OF FITTING
2. LIFTING LUGS FOR UNLOADING UNIT & STANDING UNIT UPRIGHT TO BE PLACED AS NEEDED BY FABRICATION SHOP
3. A 3x3x $\frac{1}{4}$ " STEEL GROUNDING LUG WITH A $\frac{5}{8}$ " ϕ HOLE IN CENTER TO BE PLACED ON SHELL AT BOTTOM OF TANK IN LINE WITH LIFTING LUGS

SHIP LOOSE: (INSTALLATION ON SITE BY OTHERS)
(2) 8" FLANGED EMERGENCY VENTS



| |
|--|
| CAPACITY – 12,000 GALLONS |
| TANK MATERIAL – MILD CARBON STEEL |
| THICKNESS – INNER – HEADS– 5/16”; SHELL – 5/16” |
| THICKNESS – OUTER – HEADS – 5/16”; SHELL – 1/4” |
| CONSTRUCTION – INNER – LAP WELD OUTSIDE ONLY |
| CONSTRUCTION – OUTER – LAP WELD OUTSIDE ONLY |
| TANK TEST – PER UL 2085 |
| INT. FINISH – NONE |
| EXT. FINISH – SSPC SP6 BLAST, WHITE PAINT SYSTEM |
| LABEL – UL 2085 AND FIREGUARD PER sti |
| SPECIFIC GRAVITY = 1.0 |

| | |
|---|--|
| A | 4" FEMALE FG COUPLING |
| B | 8" FFSO 150# FLANGE – PRIMARY EMERGENCY VENT USE ONLY |
| C | 8" FFSO 150# FLANGE THROUGH OUTER SHELL ONLY, MARK WITH SPECIAL WARNING LABEL INTERSTITIAL EMERGENCY VENT USE ONLY |
| D | 2" FITTING THROUGH OUTER SHELL ONLY WITH CAST IRON PLUG – MFG USE ONLY |
| E | 2" MONITOR PIPE WITH MALE NPT END |
| F | 24" X 1/4" PLATE TIGHT BOLT MANWAY WITH 1/8" THICK FIBREFLEX GASKET AND "B" IN COVER ON CL |

