

GENERAL SPECIFICATIONS

NO. REQ'D: (1)
CAPACITY: 12,000 GALLONS
TYPE: HT, HIGHGUARD, DOUBLE WALL, "J" SERIES
MATERIAL: MILD CARBON STEEL
FLOW RATE: 1200 GPM

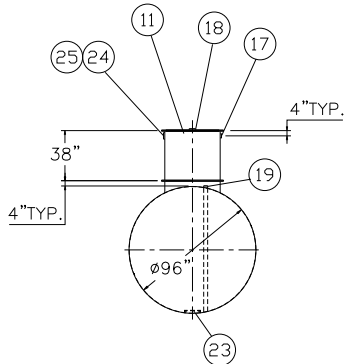
GAUGE: INNER OUTER
SHELL- 1/4" 10 GA.
HEADS- 1/4" 7 GA.

SURFACE PREP:
- SSPC NO.6 BLAST ALL EXTERIOR SURFACES
- SSPC NO.10 BLAST ALL INTERIOR SURFACES OF WATER CHAMBER ONLY

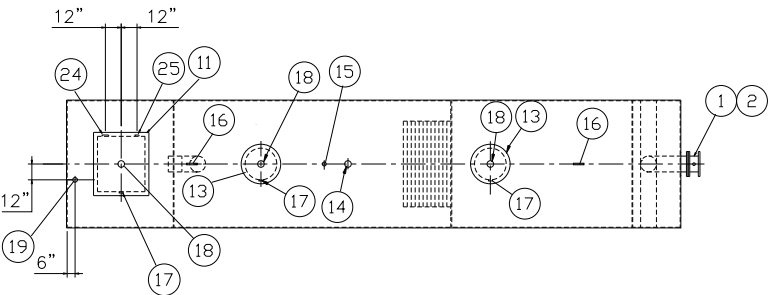
COATING: MATERIAL THICKNESS
EXTERIOR- HIGHGUARD (75 MILS)
INTERIOR- POLYURETHANE (15 MILS)
INTERIOR OF WATER CHAMBER ONLY

CONSTRUCTION : LAP FIT AND WELD ALL EXTERIOR SEAMS
OPERATING PRESSURE: ATMOSPHERIC

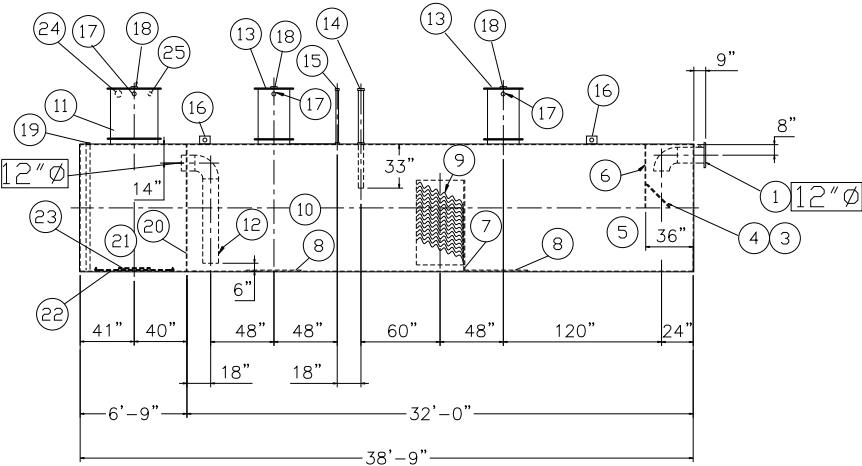
NOTES:
1. POLYURETHANE HIGHGUARD TANK IS NOT APPROVED FOR THE STORAGE OF HEATED PRODUCTS
2. CUSTOMER TO PROVIDE PUMPING INFORMATION FOR PROPER PUMP SIZING & PUMPOUT DESIGN.
3. 15000 VOLT SPARK TEST PROVIDED AT FACTORY
4. ALL VENT PIPING BY INSTALLER



END VIEW



PLAN



ELEVATION

PROVIDED EQUIPMENT

- 1. 150# R.F.S.O. FLANGE W/ 2" NPT FOR VENT
- 3. VELOCITY HEAD DIFFUSION BAFFLE
- 4. WEAR PLATE
- 5. SEDIMENT CHAMBER
- 6. UNDERFLOW BAFFLE
- 7. SLUDGE BAFFLE
- 8. STRIKER PLATES
- 9. PARALLEL CORRUGATED PLATE COALESCER
- 10. OIL/WATER SEPARATOR CHAMBER
- 11. RECTANGULAR MANWAY W/ BOLT-ON EXTENSION SHIPPED LOOSE
- 12. OUTLET DOWNCOMER
- 13. 24"Ø MANWAY WITH BOLT-ON EXTENSION SHIPPED LOOSE
- 14. 4"Ø FTG.FOR OIL PUMP-OUT WITH INTERNAL PIPE INSTALLED & RISER PIPE SHIPPED LOOSE
- 15. 2"Ø FTG. FOR LEVEL SENSOR WITH RISER PIPE SHIPPED LOOSE
- 16. LIFTING LUG
- 17. 2"Ø FTG. FOR VENT
- 18. 4"Ø FTG. FOR GAUGE WITH PLUG
- 19. 2"Ø FTG. FOR LEAK DETECTION
- 20. 1/4" BULKHEAD
- 21. EFFLUENT WATER CHAMBER
- 22. INTERNAL RIBBON ANODE
- 23. PUMP MOUNT
- 24. 4"Ø FTG. FOR PUMP CONDUIT
- 25. 3"Ø FTG. FOR EFFLUENT WATER CHAMBER LEVEL SENSOR

NOTE :
ALL RIGHTS RESERVED. THIS DRAWING OR ANY PART THEREOF MUST NOT BE REPRODUCED IN ANY FORM WITHOUT THE WRITTEN PERMISSION OF HIGHLAND TANK.
HIGHLAND TANK SHALL BE RESPONSIBLE ONLY FOR ITEMS INDICATED ON THIS FABRICATION DRAWING UNLESS OTHERWISE NOTED. CUSTOMER IS RESPONSIBLE FOR VERIFYING CORRECTNESS OF SIZE / LOCATION OF FITTINGS , ACCESSORIES & COATINGS SHOWN ON THIS DRAWING

REVISIONS



Highland Tank

U.S. Patent #4,722,800 #6,606,224 Canadian Patent # 1,296,263 # 2,389,065

12000 GALLON OIL WATER SEPARATOR
HT,HIGHGUARD,DOUBLE WALL,"J" SERIES

CUSTOMER:

PROJECT:

QUOTE NO:

CHK'D BY:

SCALE: 1/8"=1'-0"

DATE: 8-5-05

DWG. BY:

DWG. NO.: 12000HGDWHTJ