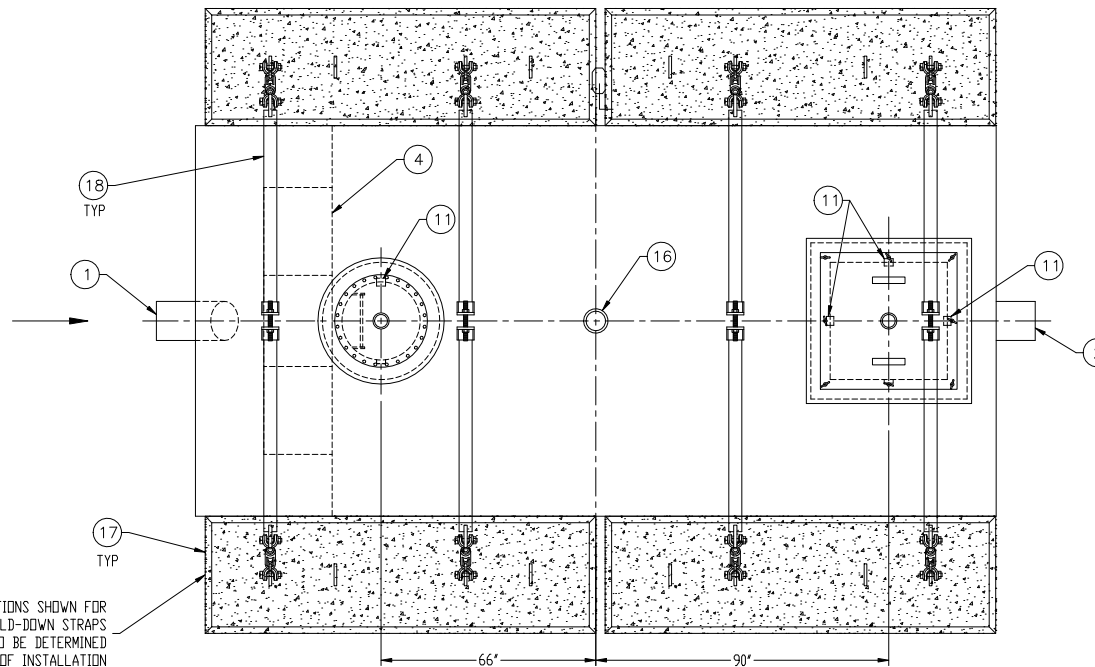


NOTE:
ALL RIGHTS RESERVED. THIS DRAWING, OR ANY PART THEREOF, MUST NOT
BE REPRODUCED IN ANY FORM WITHOUT WRITTEN PERMISSION FROM
HIGHLAND TANK. UNLESS OTHERWISE NOTED, HIGHLAND TANK SHALL BE
RESPONSIBLE ONLY FOR ITEMS INDICATED ON THIS FABRICATION DRAWING.
THE CUSTOMER IS RESPONSIBLE FOR VERIFYING THE CORRECTNESS OF
THE TYPE, SIZE, AND LOCATION OF ALL FITTINGS, ACCESSORIES, AND
COATINGS SHOWN ON THIS DRAWING.

APPROXIMATE LOCATIONS SHOWN FOR
DEADMEN & HOLD-DOWN STRAPS
ACTUAL LOCATIONS TO BE DETERMINED
AT TIME OF INSTALLATION



GENERAL SPECIFICATIONS

QUANTITY: ONE (1)
MODEL: RCT-12000-120
NOMINAL CAPACITY: 12,000 GALLONS
TYPE: SINGLE WALL, HIGHGUARD, UNDERGROUND
MATERIAL: 1/4" CARBON STEEL
GAUGE OF MATERIAL BASED ON 60" MAX. BURIAL DEPTH
LAP FIT AND WELD INTERIOR AND EXTERIOR SEAMS
TANK TEST: 3-5 PSI AIR TEST
SURFACE PREP: SSPC-SP 10 BLAST INTERIOR SURFACES
SSPC-SP 6 BLAST EXTERIOR SURFACES
COATING, EXTERIOR: HIGHGUARD POLYURETHANE-75 MILS
COATING, INTERIOR:
HighDRO®-LINER PLUS POLYURETHANE - 15 MILS
OPERATING PRESSURE: ATMOSPHERIC

PROVIDED EQUIPMENT

1. 12"Ø SCH 40 PIPE STUB - INLET
2. 12"Ø SCH 40 PIPE STUB - OVERFLOW
3. 12"Ø 45° DIFFUSION ELBOW
4. UNDERFLOW BAFFLE - 1/4"
5. DIFFUSION PLATE - 1/4"
6. 28" x 28" WEAR PLATE - 1/4"
7. STRIKER PLATE
8. STAINLESS STEEL LADDER - 16" WIDE
9. 24"Ø MANWAY WITH BOLT-ON RISER
10. 2" HC - VENT
11. 2" FC FOR WIRING
12. 4" HC GAUGE FTG
13. 36"Ø GRADE-LEVEL MANWAY - SHIPPED LOOSE
14. 36" x 36" MANWAY WITH BOLT-ON EXTENSION
15. 48" x 48" GRADE-LEVEL MANWAY - SHIPPED LOOSE
16. 6" HC TANK VENT
17. (4) CDA-45 CONCRETE DEADMAN
18. (4) 10'-0" STEEL SAFETY DEADMAN HOLD-DOWN STRAPS WITH TURNBUCKLES AND LINERS

THIS DRAWING IS SUBJECT TO CHANGE AT THE DISCRETION
OF THE MANUFACTURER. CONTACT HIGHLAND TANK FOR
THE MOST UP-TO-DATE INFORMATION AND DRAWINGS OF
OUR PRODUCTS.



Highland Tank®

HighDRO®-PURE RAINWATER HARVESTING SYSTEM
12,000 GALLON CISTERN TANK

CUSTOMER:

PROJECT:

QUOTE NO:

SCALE:

DATE:

DWG. BY:

MGS

ORDER#:

DWG. NO:

RCT-12000-120

DIMENSION TOLERANCE: ± 1"