

GENERAL SPECIFICATIONS

NO. REQ'D: (1)
CAPACITY: 12,000 GALLONS
TYPE: HT, HIGHGUARD, DOUBLE WALL, "J" SERIES
MATERIAL: MILD CARBON STEEL
FLOW RATE: 1200 GPM

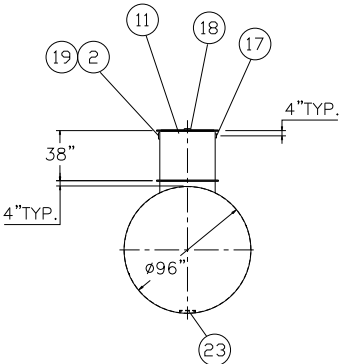
GAUGE:
SHELL- 1/4"
HEADS- 1/4"

SURFACE PREP:
- SSPC NO.6 BLAST ALL EXTERIOR SURFACES
- SSPC NO.10 BLAST ALL INTERIOR SURFACES
OF WATER CHAMBER ONLY

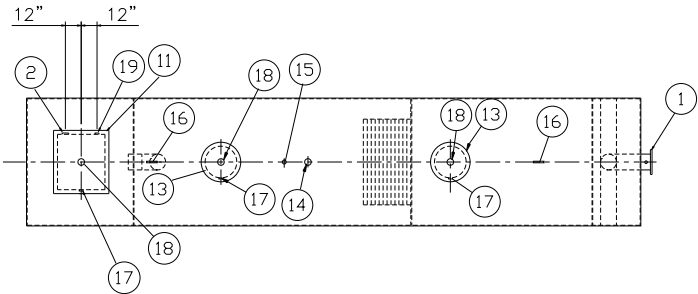
COATING: MATERIAL THICKNESS
EXTERIOR- HIGHGUARD (75 MILS)
INTERIOR- POLYURETHANE (15 MILS)
INTERIOR OF WATER
CHAMBER ONLY

CONSTRUCTION : LAP FIT AND WELD ALL EXTERIOR SEAMS
OPERATING PRESSURE: ATMOSPHERIC

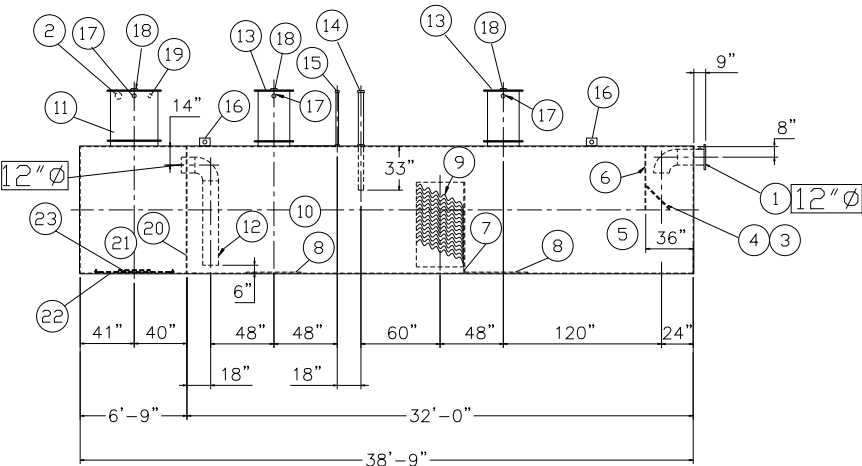
NOTES:
1. POLYURETHANE HIGHGUARD TANK IS NOT APPROVED
FOR THE STORAGE OF HEATED PRODUCTS
2. CUSTOMER TO PROVIDE PUMPING INFORMATION
FOR PROPER PUMP SIZING & PUMPOUT DESIGN.
3. 15000 VOLT SPARK TEST PROVIDED AT FACTORY
4. ALL VENT PIPING BY INSTALLER



END VIEW



PLAN



ELEVATION

PROVIDED EQUIPMENT

- 1. 150# R.F.S.O. FLANGE W/ 2" NPT FOR VENT
- 2. 4"Ø FTG. FOR PUMP CONDUIT
- 3. VELOCITY HEAD DIFFUSION BAFFLE
- 4. WEAR PLATE
- 5. SEDIMENT CHAMBER
- 6. UNDERFLOW BAFFLE
- 7. SLUDGE BAFFLE
- 8. STRIKER PLATES
- 9. PARALLEL CORRUGATED PLATE COALESCER
- 10. OIL/WATER SEPARATOR CHAMBER
- 11. RECTANGULAR MANWAY W/ BOLT-ON EXTENSION SHIPPED LOOSE
- 12. OUTLET DOWNCOMER
- 13. 24"Ø MANWAY WITH BOLT-ON EXTENSION SHIPPED LOOSE
- 14. 4"Ø FTG.FOR OIL PUMP-OUT WITH INTERNAL PIPE INSTALLED & RISER PIPE SHIPPED LOOSE
- 15. 2"Ø FTG. FOR LEVEL SENSOR WITH RISER PIPE SHIPPED LOOSE
- 16. LIFTING LUG
- 17. 2"Ø FTG. FOR VENT
- 18. 4"Ø FTG. FOR GAUGE WITH PLUG
- 19. 2"Ø FTG. FOR EFFLUENT WATER CHAMBER LEVEL SENSOR
- 20. 1/4" BULKHEAD
- 21. EFFLUENT WATER CHAMBER
- 22. INTERNAL RIBBON ANODE
- 23. PUMP MOUNT

NOTE :
ALL RIGHTS RESERVED. THIS DRAWING OR ANY PART THEREOF MUST
NOT BE REPRODUCED IN ANY FORM WITHOUT THE WRITTEN PERMISSION
OF HIGHLAND TANK.
HIGHLAND TANK SHALL BE RESPONSIBLE ONLY FOR ITEMS INDICATED
ON THIS FABRICATION DRAWING UNLESS OTHERWISE NOTED. CUSTOMER
IS RESPONSIBLE FOR VERIFYING CORRECTNESS OF SIZE / LOCATION
OF FITTINGS , ACCESSORIES & COATINGS SHOWN ON THIS DRAWING

REVISIONS			
<div>Highland Tank</div> <div>U.S. Patent #4,722,800 Canadian Patent # 1,296,263 #6,606,224 # 2,389,065</div>			
12000 GALLON OIL WATER SEPARATOR HT,HIGHGUARD,SINGLE WALL,"J" SERIES			
CUSTOMER:			
PROJECT:			
QUOTE NO:			CHK'D BY:
SCALE: 1/8"=1'-0"	DATE: 8-9-05	DWG. BY:	DWG. NO.: 12000HGSWHTJ