

GENERAL SPECIFICATIONS

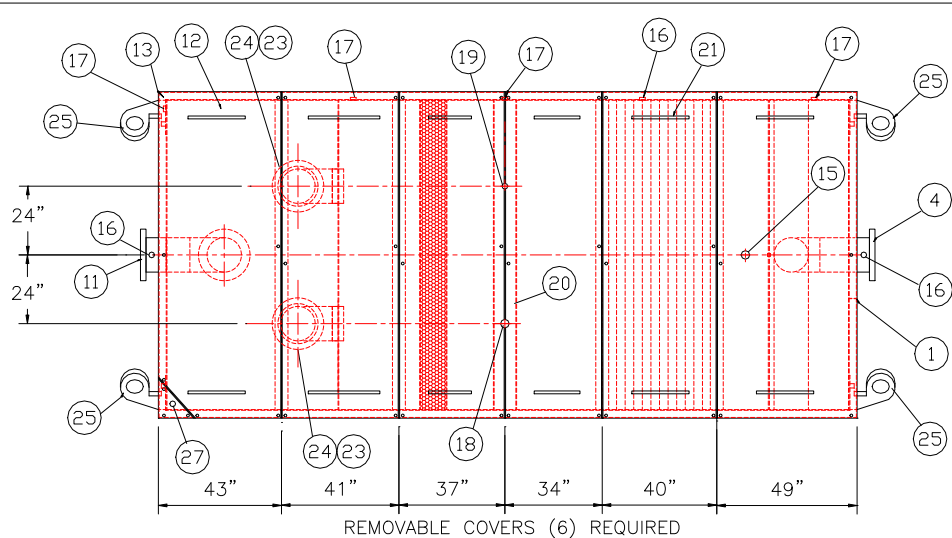
NO. REQ'D: (1)
CAPACITY: 12000 GALLONS
SPILL CAPACITY : 3600 GALLONS
TYPE: RECTANGULAR, HTC, ABOVEGROUND, SINGLE WALL
MATERIAL: MILD CARBON STEEL
APPROX. WEIGHT: 22700 LBS.
FLOW RATE: 1200 GPM
GAUGE:
SHELL- 1/4"
HEADS- 1/4"
SURFACE PREP:
SSPC NO.10 BLAST ALL INTERIOR SURFACES
SSPC NO.6 BLAST ALL EXTERIOR SURFACES

COATING:	MATERIAL	THICKNESS
EXTERIOR-	CHEMPRIME 3001	(3-6 MILS)
	CHEMLINE 3300	(2-3 MILS)
	TOP COAT "WHITE"	
INTERIOR-	CHEMLINE 4200 PW	(15 MILS)

CONSTRUCTION:
BUTT FIT & WELD ALL CORNERS IN & OUT

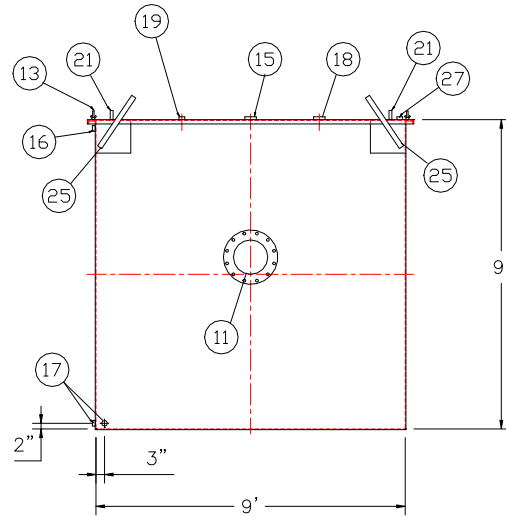
NOTES

1. ALL INTERNAL MATERIAL IS 10 GA
2. ALL THREADED DRAIN FITTINGS TO HAVE STEEL THREADED PLUGS AND COATED WITH TANK
3. ALL OTHER THREADED FITTINGS TO HAVE PVC THREADED PLUGS
4. LIFTING LUGS HAVE REINFORCING PLATES

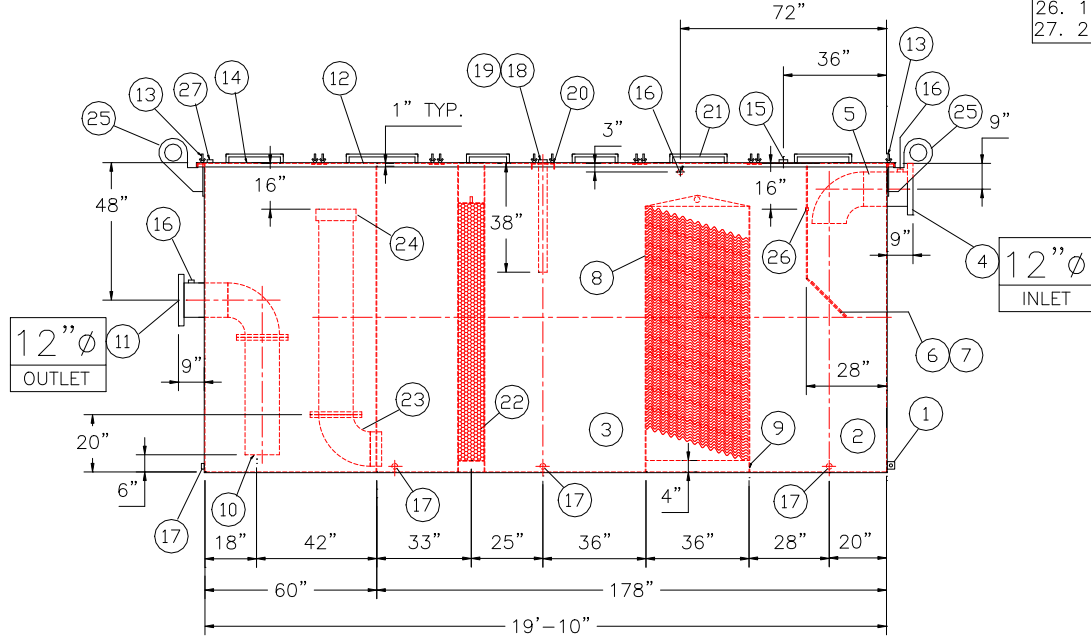


PLAN VIEW

- REQUIRED EQUIPMENT
- 3"X3"X1/4" FLAT W/ 9/16"Ø HOLE DRILLED IN CENTER (GROUNDING LUG)
 - SEDIMENT CHAMBER
 - OIL WATER SEPARATOR CHAMBER
 - 150# RFSSO FLANGED INLET
 - STEEL INLET ELBOW PIPING
 - VELOCITY HEAD DIFFUSION BAFFLE - 10GA
 - WEAR PLATE - 1/4"
 - REMOVABLE PARALLEL CORRUGATED PLATE COALESCER. CORELLA PVC PLATES (1" PLATE SPACING)
 - SLUDGE BAFFLE - 10GA
 - FLANGED PVC OUTLET DOWNCOMER PIPE
 - 150# RFSSO FLANGED OUTLET W/ INTERNAL STEEL ELBOW AND FLANGE
 - (6) PIECE COVER W/ 5/8" BOLT HOLES - 7 GA
 - NUTS & BOLTS W/ LARGE WING NUTS-TYP. (CORROSION RESISTANT)
 - GASKET MATERIAL (FOR EACH REMOVABLE COVER)
 - 3"Ø FNPT (CLEAN-OUT)
 - 2"Ø FNPT (VENT)
 - 2"Ø FNPT HALF COUPLING (DRAIN) W/ STEEL PLUG
 - 3"Ø FNPT FULL COUPLING W/ 3" Ø INTERNAL PVC PIPE (OIL PUMPOUT)
 - 2"Ø FNPT HALF COUPLING (INTERFACE LEVEL SENSOR)
 - 7GA. CROSSMEMBER 9" WIDE FOR OIL PUMP-OUT AND LEVEL SENSOR FTGS.
 - HANDLES PER H.T. STANDARD
 - 6" THICK REMOVABLE PETROSCREEN CARTRIDGE COALESCER
 - 10"Ø STEEL ELBOW W/ FLANGE WELDED TO TOP FOR PVC RISER PIPES
 - 10"Ø ADJUSTABLE FERNCO COUPLING
 - 3/4" THICK LIFTING LUG ANGLED TOWARD CENTER
 - 1"Ø FNPT COUPLING W/ PLUG
 - 2"Ø FNPT HALF COUPLING (SPARE)



END VIEW




ELEVATION

NOTE :
ALL RIGHTS RESERVED. THIS DRAWING OR ANY PART THEREOF MUST NOT BE REPRODUCED IN ANY FORM WITHOUT THE WRITTEN PERMISSION OF HIGHLAND TANK.
HIGHLAND TANK SHALL BE RESPONSIBLE ONLY FOR ITEMS INDICATED ON THIS FABRICATION DRAWING UNLESS OTHERWISE NOTED. CUSTOMER IS RESPONSIBLE FOR VERIFYING CORRECTNESS OF SIZE / LOCATION OF FITTINGS , ACCESSORIES & COATINGS SHOWN ON THIS DRAWING

UNLESS OTHERWISE SPECIFIED DIMENSIONS ARE IN INCHES TOLERANCES ARE + OR - 1"

SCALE: 1/4"=1'-0" DATE: DWG. BY: DWG. NO: 12000RECSWHTC

REVISIONS

 **Highland Tank**

U.S. Patent #4,722,800 Canadian Patent # 1,296,263

12000 GALLON OIL WATER SEPARATOR
RECTANGULAR, HTC, SINGLE WALL

CUSTOMER:

PROJECT:

QUOTE NO:

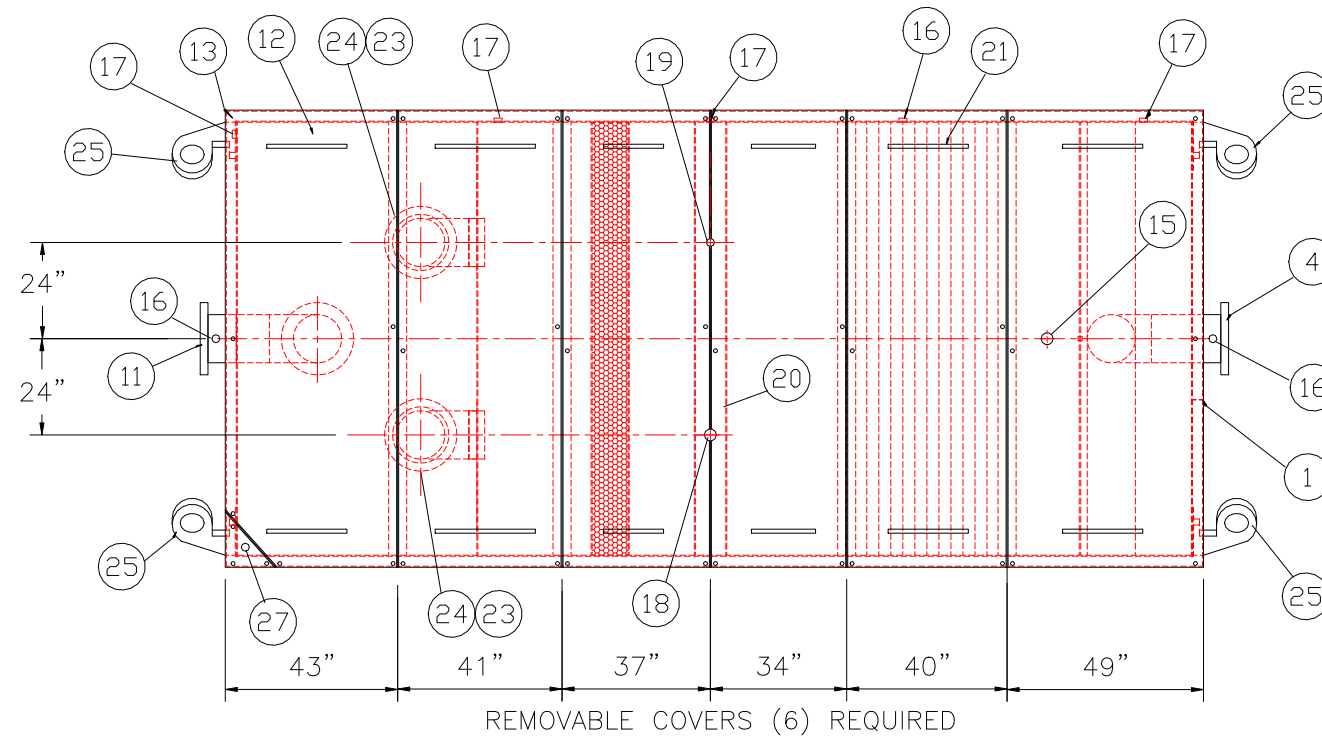
CHK'D BY:

NO. REQ'D: (1)
CAPACITY: 12000 GALLONS
SPILL CAPACITY : 3600 GALLONS
TYPE: RECTANGULAR, HTC, ABOVEGROUND, SINGLE WALL
MATERIAL: MILD CARBON STEEL
APPROX. WEIGHT: 22700 LBS.
FLOW RATE: 1200 GPM
GAUGE:
SHELL- 1/4"
HEADS- 1/4"
SURFACE PREP:
SSPC NO.10 BLAST ALL INTERIOR SURFACES
SSPC NO.6 BLAST ALL EXTERIOR SURFACES

COATING:	MATERIAL	THICKNESS
EXTERIOR—	CHEMPRIME 3001	(3–6 MILS)
	CHEMLINE 3300 TOP COAT "WHITE"	(2–3 MILS)
INTERIOR—	CHEMLINE 4200 PW	(15 MILS)

CONSTRUCTION:
BUTT FIT & WELD ALL CORNERS IN & OUT

1. ALL INTERNAL MATERIAL IS 10 GA
2. ALL THREADED DRAIN FITTINGS TO HAVE STEEL THREADED PLUGS AND COATED WITH TANK
3. ALL OTHER THREADED FITTINGS TO HAVE PVC THREADED PLUGS
4. LIFTING LUGS HAVE REINFORCING PLATES

[illegible]

Technical drawing of a mechanical assembly, likely a filter housing, showing a top view with dimensions and callouts. The drawing includes a 12" diameter inlet on the right and a 12" diameter outlet on the left. The assembly features a central filter element (8) and various internal components (1-7, 9-10, 12-17, 19-20, 22-24, 26-27). Dimensions are provided in inches, including overall dimensions (178 inches width, 19 feet 10 inches length) and component-specific measurements (e.g., 72 inches, 36 inches, 48 inches, 20 inches, 6 inches, 18 inches, 42 inches, 33 inches, 25 inches, 36 inches, 36 inches, 28 inches, 20 inches, 60 inches, 178 inches, 19 feet 10 inches). Callouts 1 through 27 identify various parts and features.

1. 3"x3"x1/4' FLAT W/ 9/16"ø HOLE DRILLED IN CENTER (GROUNDING LUG)
2. SEDIMENT CHAMBER
3. OIL WATER SEPARATOR CHAMBER
4. 150# RFSO FLANGED INLET
5. STEEL INLET ELBOW PIPING
6. VELOCITY HEAD DIFFUSION BAFFLE - 10GA
7. WEAR PLATE - 1/4"
8. REMOVABLE PARALLEL CORRUGATED PLATE COALESCER. CORELLA PVC PLATES (1" PLATE SPACING)
9. SLUDGE BAFFLE - 10GA
10. FLANGED PVC OUTLET DOWNCOMER PIPE
11. 150# RFSO FLANGED OUTLET W/ INTERNAL STEEL ELBOW AND FLANGE
12. (6) PIECE COVER W/ 5/8" BOLT HOLES - 7 GA
13. NUTS & BOLTS W/ LARGE WING NUTS-TYP. (CORROSION RESISTANT)
14. GASKET MATERIAL (FOR EACH REMOVABLE COVER)
15. 3"ø FNPT (CLEAN-OUT)
16. 2"ø FNPT (VENT)
17. 2"ø FNPT HALF COUPLING (DRAIN) W/ STEEL PLUG
18. 3"ø FNPT FULL COUPLING W/ 3" ø INTERNAL PVC PIPE (OIL PUMPOUT)
19. 2"ø FNPT HALF COUPLING (INTERFACE LEVEL SENSOR)
20. 7GA. CROSSMEMBER 9" WIDE FOR OIL PUMP-OUT AND LEVEL SENSOR FTGS.
21. HANDLES PER H.T. STANDARD
22. 6" THICK REMOVABLE PETROSCREEN CARTRIDGE COALESCER
23. 10"ø STEEL ELBOW W/ FLANGE WELDED TO TOP FOR PVC RISER PIPES
24. 10"ø ADJUSTABLE FERNCO COUPLING
25. 3/4 THICK LIFTING LUG ANGLED TOWARD CENTER
26. 1"ø FNPT COUPLING W/ PLUG
27. 2"ø FNPT HALF COUPLING (SPARE)

Highland Tank

12000 GALLON OIL WATER SEPARATOR
RECTANGULAR, HTC, SINGLE WALL

SCALE:
1/4"=1'-0"

12000RECSWHTC

NOTE :
ALL RIGHTS RESERVED. THIS DRAWING OR ANY PART THEREOF MUST
NOT BE REPRODUCED IN ANY FORM WITHOUT THE WRITTEN PERMISSION
OF HIGHLAND TANK.
HIGHLAND TANK SHALL BE RESPONSIBLE ONLY FOR ITEMS INDICATED
ON THIS FABRICATION DRAWING UNLESS OTHERWISE NOTED. CUSTOMER
IS RESPONSIBLE FOR VERIFYING CORRECTNESS OF SIZE / LOCATION
OF FITTINGS , ACCESSORIES & COATINGS SHOWN ON THIS DRAWING

UNLESS OTHERWISE SPECIFIED DIMENSIONS ARE IN INCHES
TOLERANCES ARE + OR - 1"