

SHIP LOOSE

(2) 10" FLANGED EMERGENCY VENTS

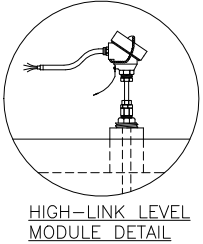
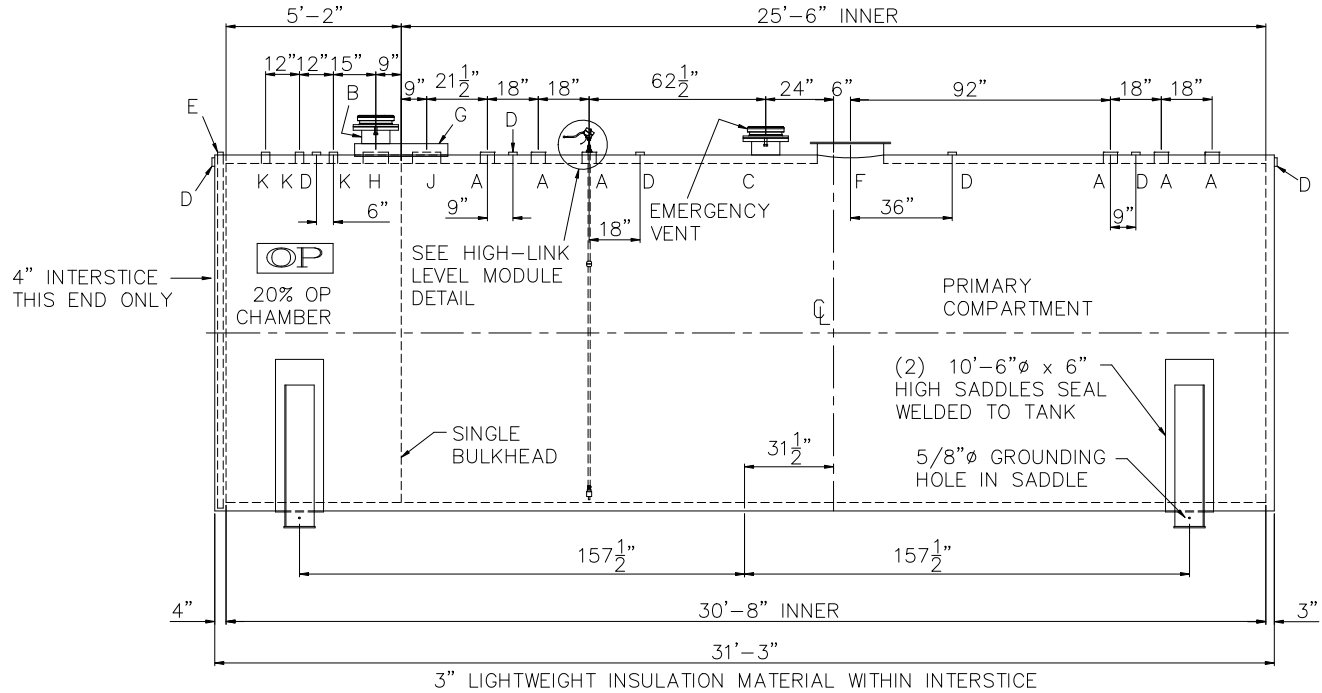
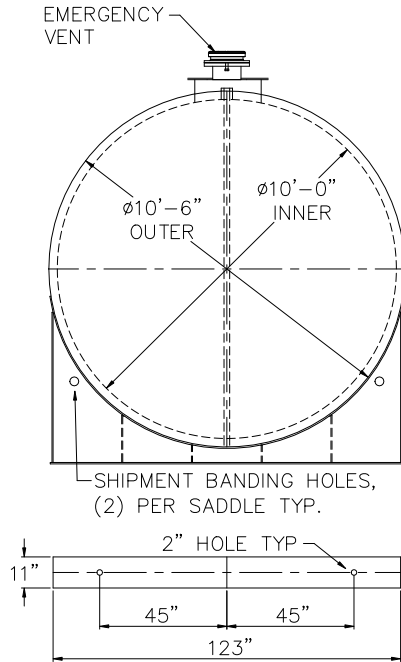
INSTALLED

(1) HIGH-LINK LEVEL MODULE MODEL# LS_XEXD 126" LONG & BUSHING.

TOUCH UP OF FINISHED PAINT IS REQUIRED BY INSTALLATION CONTRACTOR. TOUCH UP PAINT SHIPPED WITH TANK.

SHIPPING LUGS AS NEEDED

NOTE: ALL RIGHTS RESERVED. THIS DRAWING MUST NOT BE REPRODUCED IN ANY FORM WITHOUT THE WRITTEN PERMISSION OF HIGHLAND TANK. HIGHLAND TANK SHALL BE RESPONSIBLE ONLY FOR ITEMS INDICATED ON THIS FABRICATION DRAWING UNLESS OTHERWISE NOTED. CUSTOMER IS RESPONSIBLE FOR VERIFYING CORRECTNESS OF SIZE AND LOCATION OF FITTINGS, ACCESSORIES, AND COATINGS SHOWN ON THIS DRAWING.



DESIGN DATA

CAPACITY : 15,000 GALLONS
TYPE: FIREGUARD CYLINDRICAL
FIREGUARD IS A TRADEMARK OF THE STEEL TANK INSTITUTE
NO. REQ. --
OPERATING PRESSURE -- ATMOSPHERIC
SPECIFIC GRAVITY = 1.0
TANK MATERIAL -- MILD CARBON STEEL
THICKNESS -- INNER -- HEADS: 5/16", SHELL: 1/4"
THICKNESS -- OUTER -- HEADS: 5/16", SHELL: 1/4"
MIN. GAUGE OR THICKNESS (PER U.L. 2085)
CONSTRUCTION -- INNER -- LAP WELD OUTSIDE ONLY
CONSTRUCTION -- OUTER -- LAP WELD OUTSIDE ONLY
TANK TEST -- PER UL 2085
INT. FINISH -- NONE
EXT. FINISH -- SP-6 BLAST, FINISH PAINT WHITE
LABEL-- UL 2085 AND FIREGUARD PER sti

LEGEND

A	4" FEMALE FIREGUARD COUPLING	G	33" LONG x 14" WIDE x 4" HIGH CLOSED TOP STEEL ENCLOSURE WELDED TO OUTER TANK
B	10" FFSO 150# FLANGE -- FOR PRIMARY EMERGENCY VENT USE ONLY	H	8" FEMALE FIREGUARD COUPLING
C	10" FFSO 150# FLANGE THROUGH OUTER SHELL ONLY, MARK WITH SPECIAL WARNING LABEL INTERSTITIAL EMERGENCY VENT USE ONLY	J	10" SCH 40 PIPE
D	2" FITTING THROUGH OUTER SHELL ONLY WITH CAST IRON PLUG-- MFG USE ONLY	K	2" FEMALE FIREGUARD COUPLING
E	2" INTERSTITIAL MONITOR PIPE -- MALE NPT END	L	--
F	24" x 1/4" PLATE TIGHT BOLT MANWAY WITH 1/8" THICK NEO-CORK GASKET		

NOTES: STRIKER PLATES ARE NOT SUPPLIED ON FIREGUARDS UNLESS SPECIFIED

Highland Tank MFG CO.		Highland Tank	
UNLESS NOTED, TOLERANCES ARE +/- 1"			
15,000 GAL 120" Ø CYL. FIREGUARD OP®			
PATENT: 5,695,089		PATENT: 5,809,650	
CUSTOMER:			
PROJECT:			
QUOTE NO:		CHK'D BY:	
SCALE: 1/4"=1'-0"	DATE:	DWG. BY:	DWG. NO: 15000FGCYL1200P