

CUSTOMER APPROVAL

THE CUSTOMER HAS REVIEWED THIS
DRAWING AND VERIFIED THE ACCURACY
OF ALL INFORMATION AND DIMENSIONS.

SIGNED: _____

DATE: _____

GENERAL SPECIFICATIONS

QUANTITY: ONE (1)
MODEL: RCT-15000-120 AC
CAPACITY: 15,000 GALLONS
TYPE: SINGLE WALL, ABOVE-GROUND
MATERIAL: 1/4" CARBON STEEL SHELL, 5/16" HEADS
LAP FIT AND WELD INTERIOR AND EXTERIOR SEAMS
TANK TEST: 3-5 PSI AIR TEST
SURFACE PREP: SSPC-SP 10 BLAST INTERIOR SURFACES
SSPC-SP 6 BLAST EXTERIOR SURFACES
COATING, EXTERIOR: WHITE URETHANE - 3-5 MILS
COATING, INTERIOR:
HighDRO®- LINER PLUS POLYURETHANE - 15 MILS
OPERATING PRESSURE: ATMOSPHERIC

PROVIDED EQUIPMENT

1. 12"Ø SCH 40 PIPE STUB - INLET
2. 12"Ø SCH 40 PIPE STUB - OVERFLOW
3. 12"Ø 45° DIFFUSION ELBOW
4. UNDERFLOW BAFFLE - 1/4"
5. DIFFUSION BAFFLE - 1/4"
6. 28" x 28" x 1/4" WEAR PLATE
7. STAINLESS STEEL LADDER
8. STRIKER PLATE
9. 2" FNPT WITH STEEL PLUG - DRAIN
10. 24"Ø MANWAY WITH FLANGED EASY-ACCESS HATCH
11. 3"Ø-150# RFSO FLANGE - SUCTION
12. 4" FNPT - NORMAL TANK VENT
13. 8"Ø-150# FFSO FLANGE - EMERGENCY VENT
14. 6" HIGH UL SADDLE - SEAL-WELD TO TANK

THIS DRAWING IS SUBJECT TO CHANGE AT THE DISCRETION
OF THE MANUFACTURER. CONTACT HIGHLAND TANK FOR
THE MOST UP-TO-DATE INFORMATION AND DRAWINGS OF
OUR PRODUCTS.



Highland Tank®

HighDRO®-PURE RAINWATER HARVESTING SYSTEM
15,000 GALLON CISTERN TANK

CUSTOMER: _____

PROJECT: _____

QUOTE NO: _____

ORDER#:

SCALE:

DATE:

DWG. BY:

DWG. NO.:

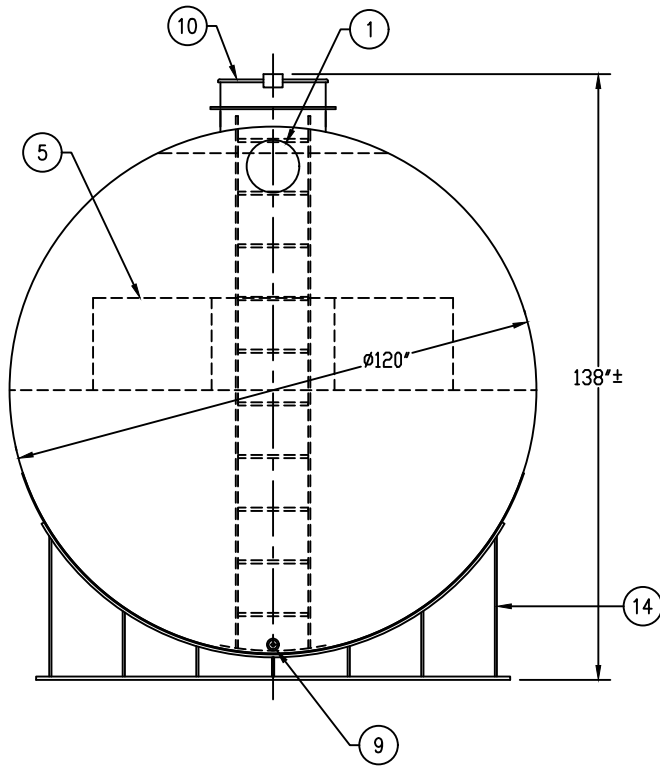
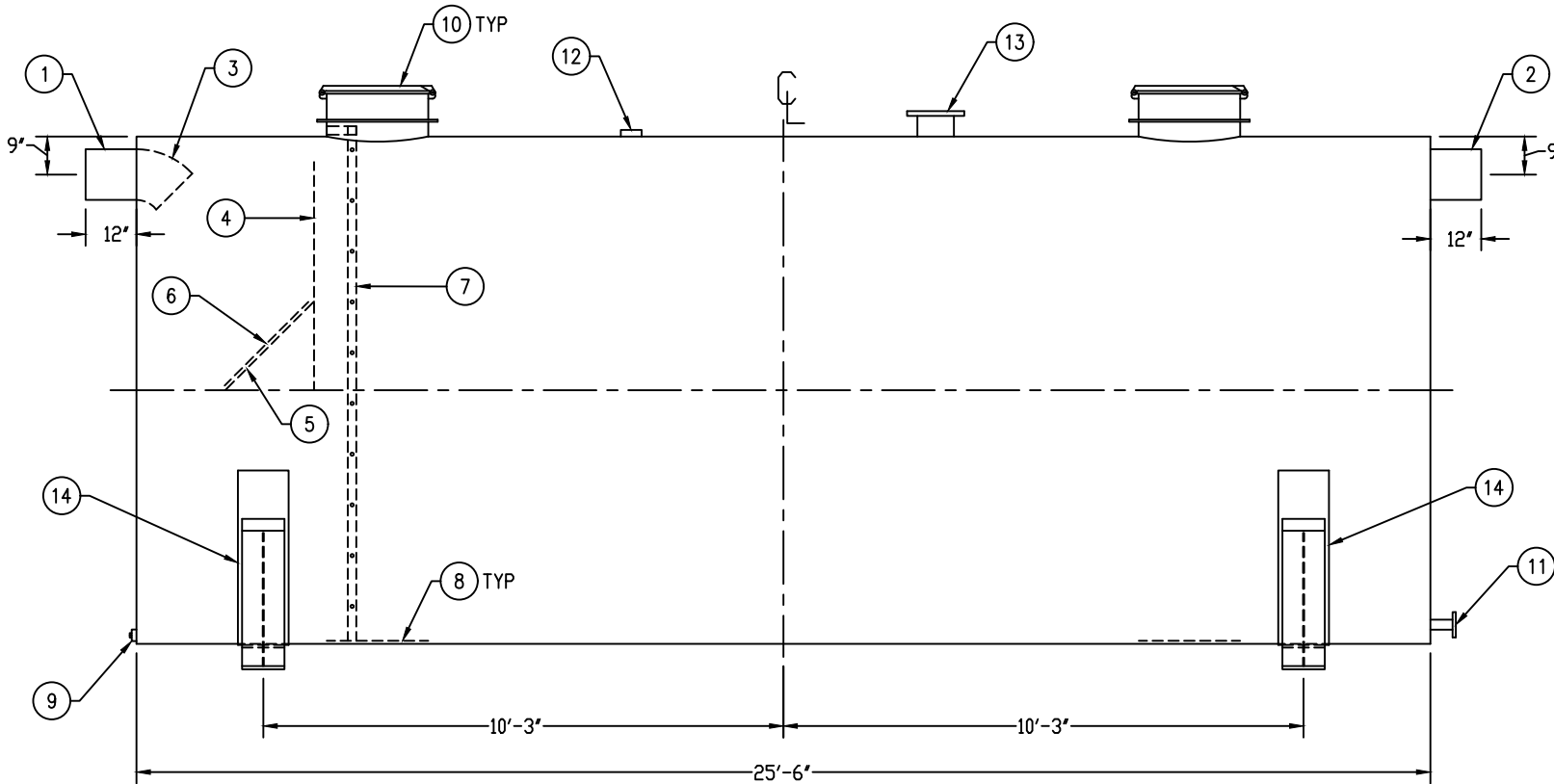
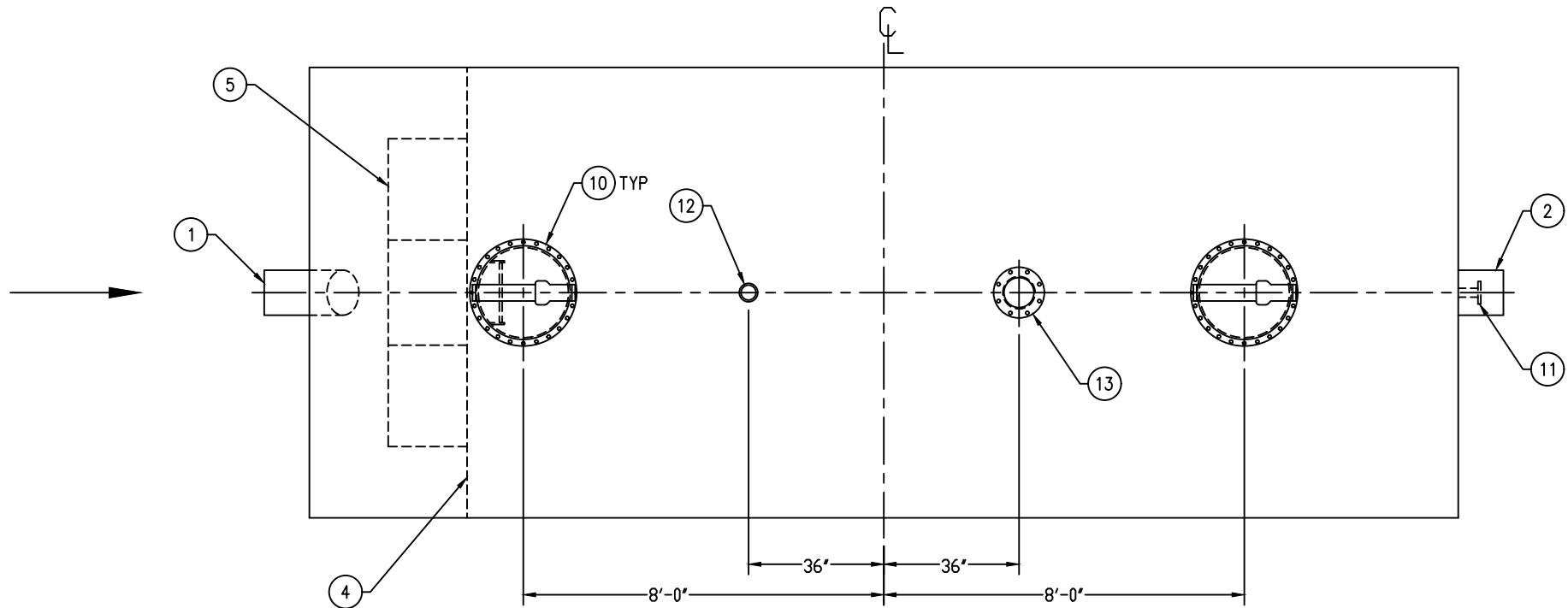
DIMENSION TOLERANCE: ± 1"

NTS

4/19/21

MGS

RCT-15000-120 AC



NOTE:
ALL RIGHTS RESERVED. THIS DRAWING, OR ANY PART THEREOF, MUST NOT
BE REPRODUCED IN ANY FORM WITHOUT WRITTEN PERMISSION FROM
HIGHLAND TANK. UNLESS OTHERWISE NOTED, HIGHLAND TANK SHALL BE
RESPONSIBLE ONLY FOR ITEMS INDICATED ON THIS FABRICATION DRAWING.
THE CUSTOMER IS RESPONSIBLE FOR VERIFYING THE CORRECTNESS OF
THE TYPE, SIZE, AND LOCATION OF ALL FITTINGS, ACCESSORIES, AND
COATINGS SHOWN ON THIS DRAWING.